



# **GOLD AND COMPANY, LLC**



**606 Baltimore Ave, Suites 300+307, Towson, MD 21204**

## **Gold and Company, LLC**

**5601 Newbury St.  
Baltimore, MD 21209**

**Alex Simone  
443.845.4413  
[Alex@goldcommercial.net](mailto:Alex@goldcommercial.net)**

**Mitch Gold  
410.456.2492  
[Mitch@goldcommercial.net](mailto:Mitch@goldcommercial.net)**

**Office: 410.578.1300  
[www.goldcommercial.net](http://www.goldcommercial.net)**

- **Office Condos FOR SALE**
- **Downtown Towson**
- **2,060 +/- sf**
- **6 private offices**
- **Nice buildout**
- **Convenient to the Baltimore County Circuit Court House**
- **Taxes - \$5,000/year +/-**
- **Condo fees - \$1,300/month +/-**
- **Office furnishings available**
  - **Including mobile shelves**



# Gold and Company

*Commercial Real Estate in the Baltimore Metropolitan Area*

**606 Baltimore Ave, Suites 300+307, Towson, MD 21204**



**Alex Simone / Mitch Gold**  
**Gold and Company, LLC**  
**5601 Newbury St.**  
**Baltimore, MD 21209**

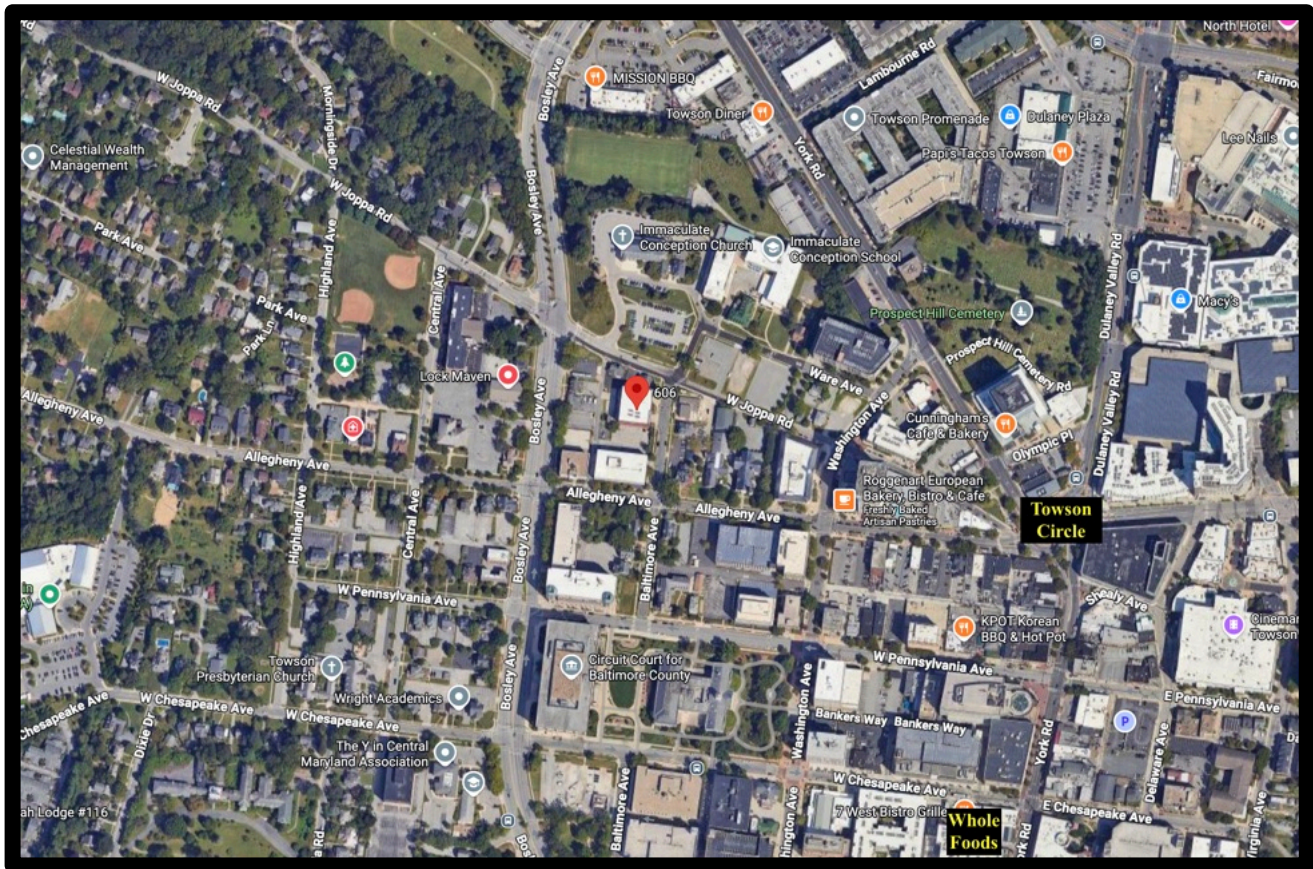
**410.578.1300**  
**[www.goldcommercial.net](http://www.goldcommercial.net)**



# Gold and Company

*Commercial Real Estate in the Baltimore Metropolitan Area*

**606 Baltimore Ave, Suites 300+307, Towson, MD 21204**



**Alex Simone / Mitch Gold**  
**Gold and Company, LLC**  
**5601 Newbury St.**  
**Baltimore, MD 21209**

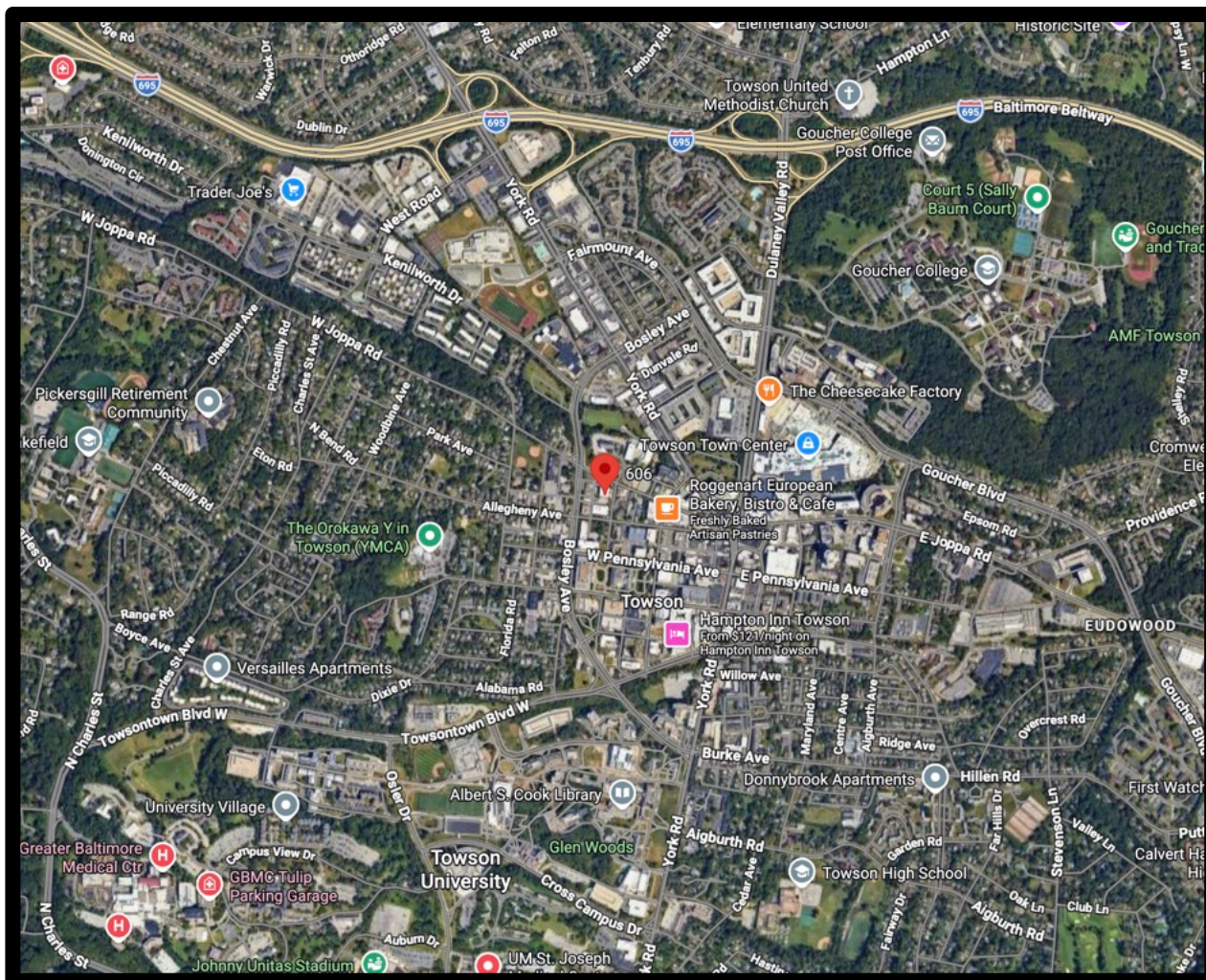
**410.578.1300**  
**[www.goldcommercial.net](http://www.goldcommercial.net)**



# Gold and Company

*Commercial Real Estate in the Baltimore Metropolitan Area*

**606 Baltimore Ave, Suites 300+307, Towson, MD 21204**



**Alex Simone / Mitch Gold**  
**Gold and Company, LLC**  
**5601 Newbury St.**  
**Baltimore, MD 21209**

**410.578.1300**  
**[www.goldcommercial.net](http://www.goldcommercial.net)**