



GOLD AND COMPANY, LLC

COMMERCIAL REAL ESTATE IN THE BALTIMORE METROPOLITAN AREA

FLEX SPACE FOR LEASE



- **Flex Space Available FOR LEASE**
- **1722: 4,750 Total SF with 2 Loading Docks**
- **1726: 6,250 Total SF with 2 Loading Docks**
- **Both Spaces can be Combined for +/- 11,000 Total SF**
- **+/- 17' Clear Height**
- **I-1 Zoning (Light Industrial)**
- **Great access to I-895, I-95, and Route 40**
- **Contact Us for More Information**

1722-1726 EDISON HWY, BALTIMORE, MD 21213

JIM CHIVERS - JIM@GOLDCOMMERCIAL.NET - 443.928.7522

WILL MCCULLOUGH - WILL@GOLDCOMMERCIAL.NET - 410.292.2985



GOLD AND COMPANY, LLC

COMMERCIAL REAL ESTATE IN THE BALTIMORE METROPOLITAN AREA

ADDITIONAL PICTURES

1722-1726 EDISON HWY, BALTIMORE, MD 21213

Rear Loading Area



JIM CHIVERS - JIM@GOLDCOMMERCIAL.NET - 443.928.7522

WILL MCCULLOUGH - WILL@GOLDCOMMERCIAL.NET - 410.2922985 2

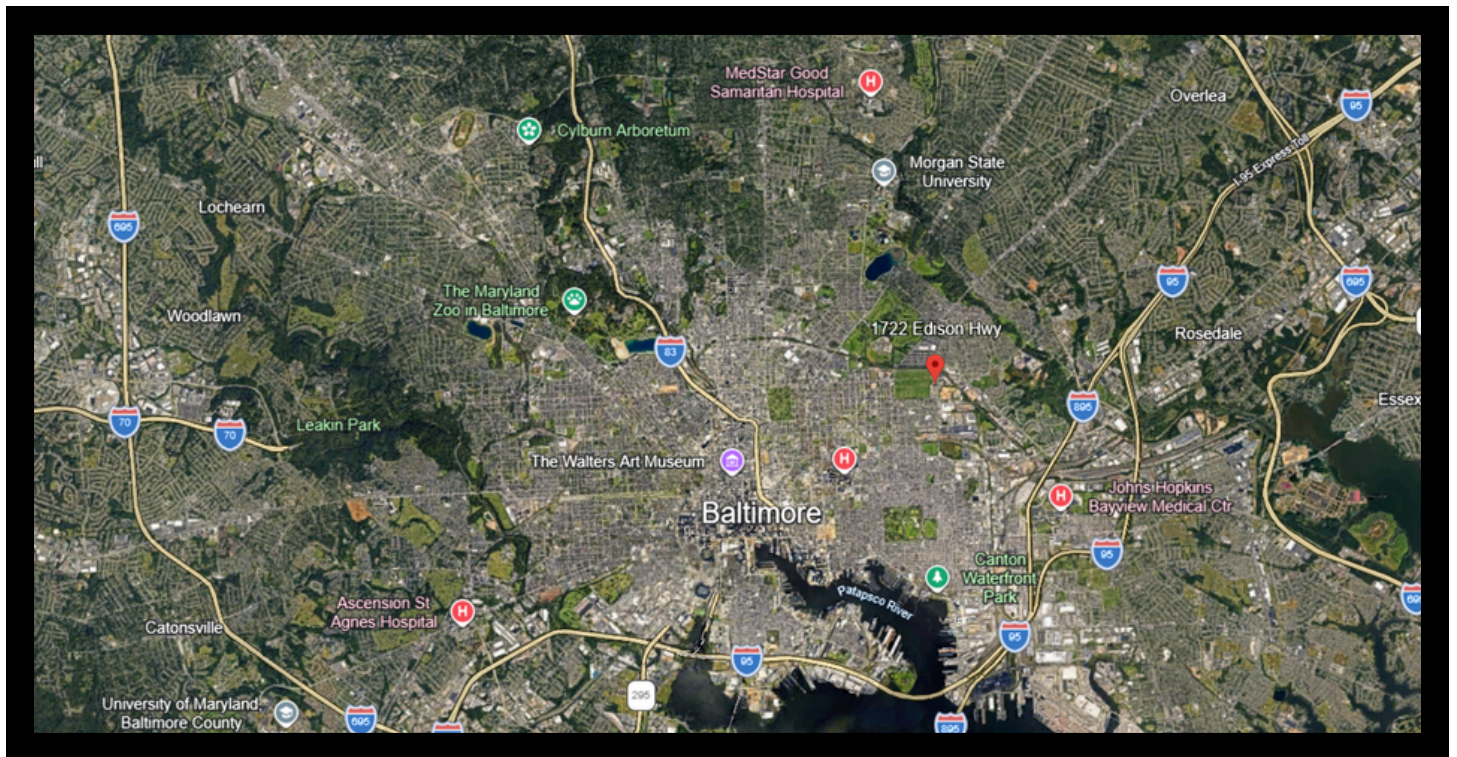


GOLD AND COMPANY, LLC

COMMERCIAL REAL ESTATE IN THE BALTIMORE METROPOLITAN AREA

MAP

1722-1726 EDISON HWY, BALTIMORE, MD 21213



JIM CHIVERS - JIM@GOLDCOMMERCIAL.NET - 443.928.7522

WILL MCCULLOUGH - WILL@GOLDCOMMERCIAL.NET - 410.292.2985



GOLD AND COMPANY, LLC

COMMERCIAL REAL ESTATE IN THE BALTIMORE METROPOLITAN AREA

CONTACT

**Gold and Company, LLC
5601 Newbury St.
Baltimore, MD 21209**

**Jim Chivers
Sr. Vice President - 443.928.7522 cell
jim@goldcommercial.net**

**Will McCullough
Vice President - 410.292.2985
will@goldcommercial.net**

WWW.GOLDCOMMERCIAL.NET