



# Gold and Company, LLC

[www.goldcommercial.net](http://www.goldcommercial.net)

**Commercial Real Estate in the Baltimore Metropolitan Area**



## **649 S. Pulaski St. Baltimore, MD 21223**

Jim Chivers  
Sr. Vice President  
443.928.7522 - cell  
[jim@goldcommercial.net](mailto:jim@goldcommercial.net)

Will McCullough  
Vice President  
410.292.2985 - cell  
[will@goldcommercial.net](mailto:will@goldcommercial.net)

[www.goldcommercial.net](http://www.goldcommercial.net)

- Industrial Property Available FOR SALE
- +/- +/- 17,700 sf Warehouse
- 0.71 Acres
- Drive-In Access
- I-1 Zoning - Baltimore City
- Heavy Power
- Located in Qualified Hub Zone and Enterprise Zone
- Ideal for manufacturing / assembly / machine shop
- Contact us for More Information

This Property offering is subject to change without notice. All information is deemed reliable but not guaranteed

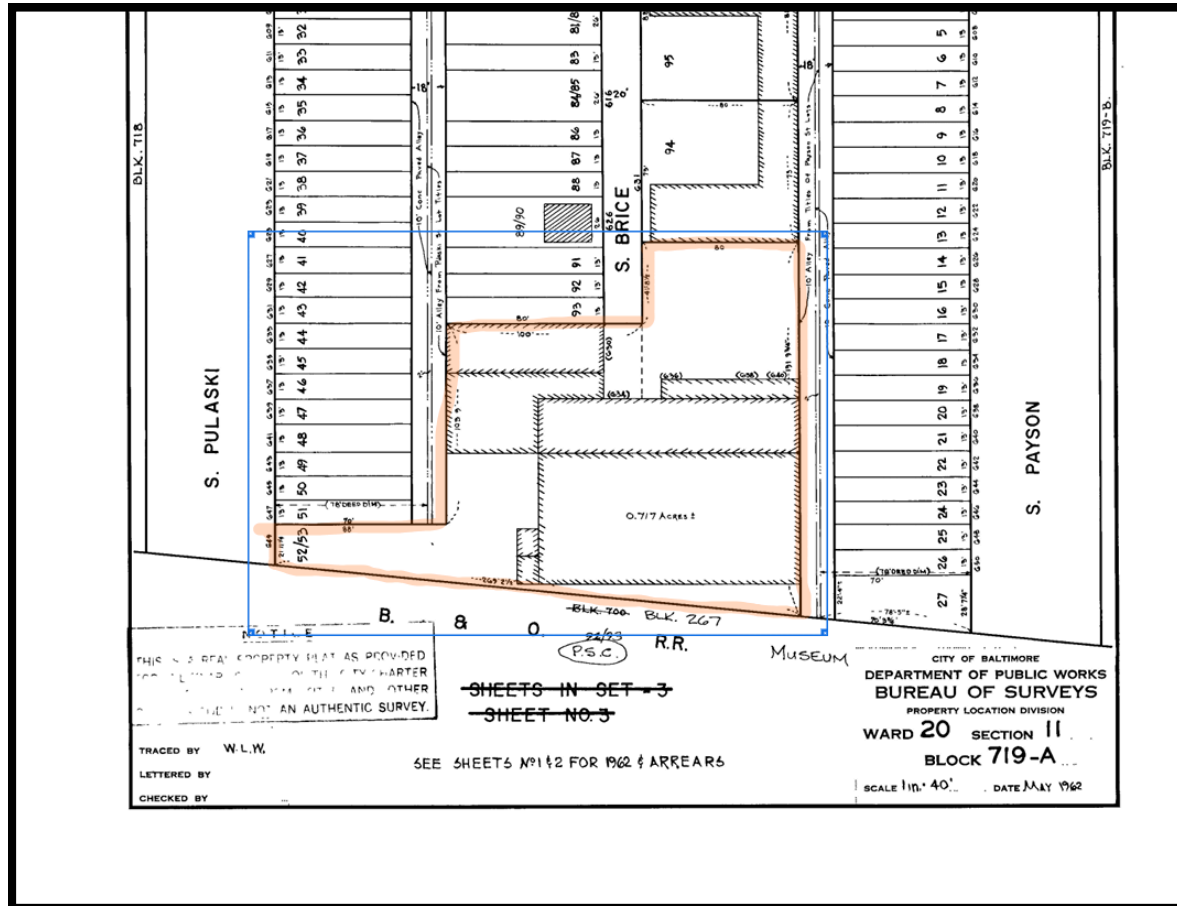


# Gold and Company, LLC

Commercial Real Estate in the Baltimore Metropolitan Area

**649 S. Pulaski St. Baltimore, MD 21223**

## Block Map



Jim Chivers

[jim@goldcommercial.net](mailto:jim@goldcommercial.net)

443.928.7522 - cell

Will McCullough

[will@goldcommercial.net](mailto:will@goldcommercial.net)

410.292.2985 - cell

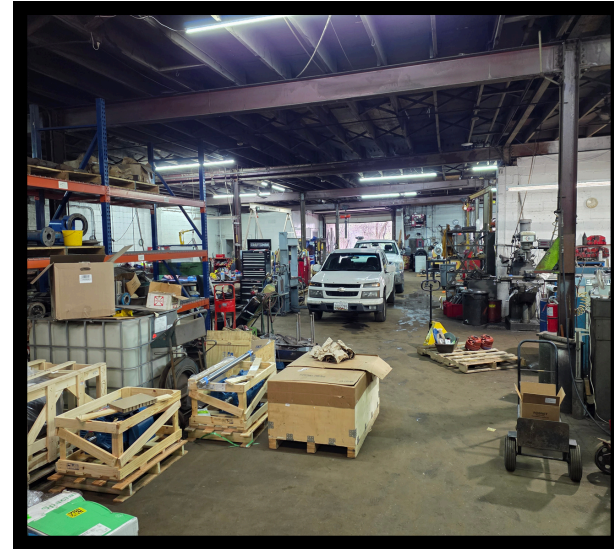
[www.goldcommercial.net](http://www.goldcommercial.net)



# Gold and Company, LLC

Commercial Real Estate in the Baltimore Metropolitan Area

## Additional Pictures



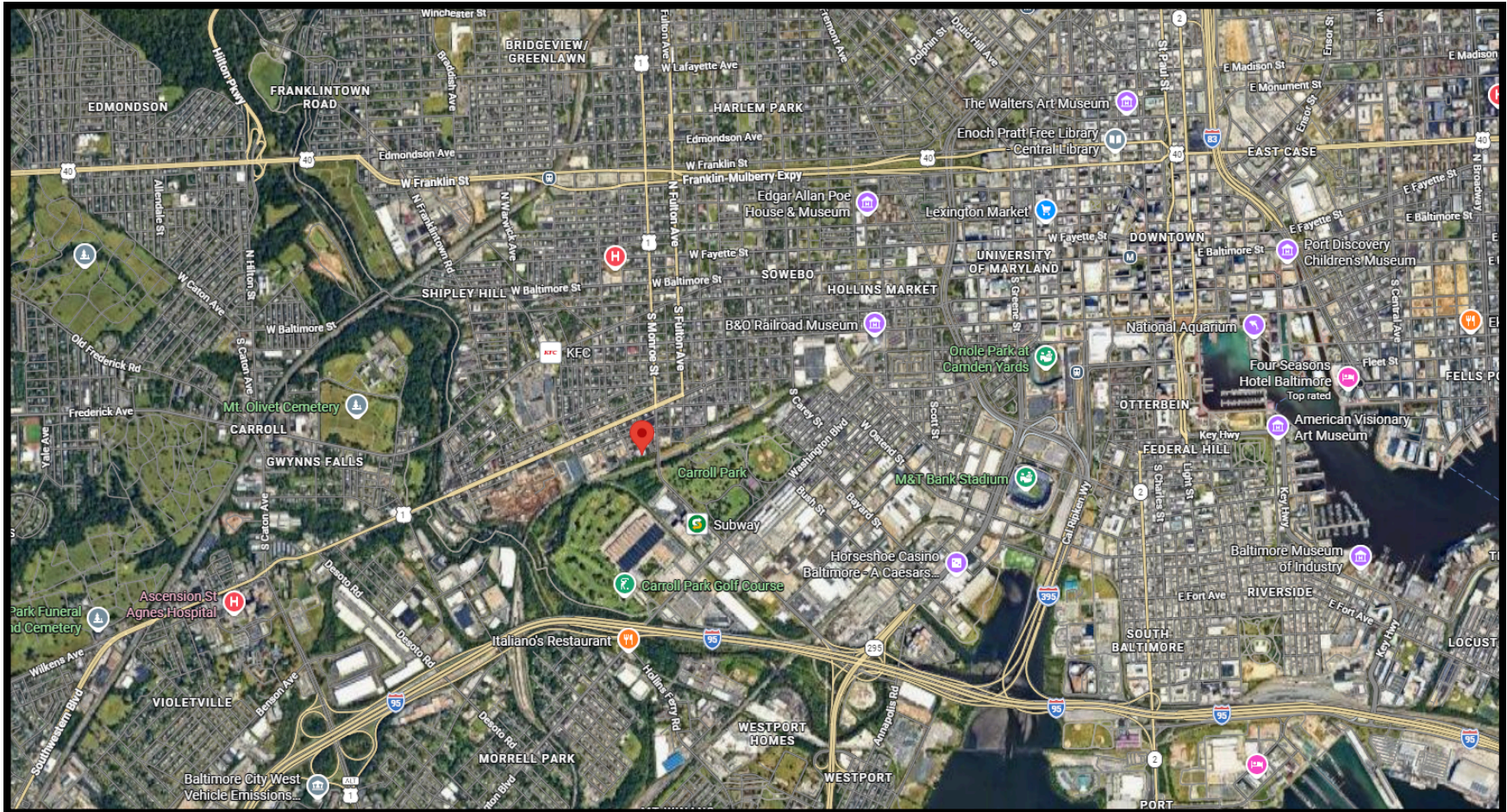


# Gold and Company, LLC

Commercial Real Estate in the Baltimore Metropolitan Area

**649 S. Pulaski St. Baltimore, MD 21223**

## Map



Jim Chivers

[jim@goldcommercial.net](mailto:jim@goldcommercial.net)

443.928.7522 - cell

Will McCullough

[will@goldcommercial.net](mailto:will@goldcommercial.net)

410.292.2985 - cell

4

[www.goldcommercial.net](http://www.goldcommercial.net)