



Gold and Company, LLC

www.goldcommercial.net

Commercial Real Estate in the Baltimore Metropolitan Area



4721 Benson Avenue, Halethorpe, MD 21227

Jim Chivers
Sr. Vice President
443.928.7522 - cell
jim@goldcommercial.net

Kyle Brown
Associate
443.425.8279 - cell
kyle@goldcommercial.net

www.goldcommercial.net

- **Mixed-Use Industrial Property Available FOR SALE**
- **+/- 5,300 sf of Total Building**
- **0.49 Acres**
- **Drive-In Access**
- **ML-IM Zoning - Baltimore County**
- **Residential Building with Tenants in Place**
- **Ideal for Contractor Shop**
- **Contact us for More Information**

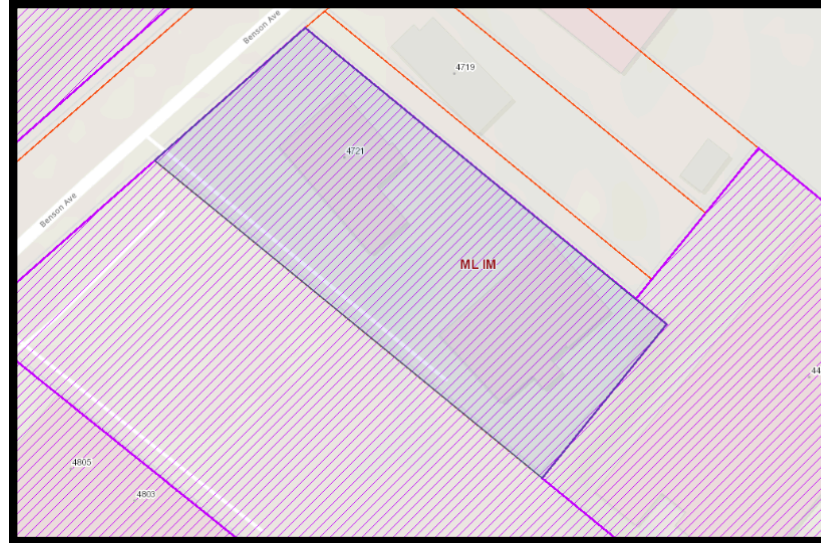
This Property offering is subject to change without notice. All information is deemed reliable but not guaranteed



Gold and Company, LLC

Commercial Real Estate in the Baltimore Metropolitan Area

Zoning Map



welcome to
Baltimore County, Maryland

Baltimore County
Zoning Report

Zoning Information for ML

Zone Description:
Manufacturing, Light

Intent:
Manufacturing, Light

Typical Uses Permitted by Right:
Industrial Uses Requiring Assembly, Production, Processing, Packaging, Or Treatment Of Various Elements, Laboratory, Office, Medical Clinic, Excavation Not Involving Explosives, Equipment And Material Storage Yard, Brewery.

Typical Uses Permitted by Special Exception:
Excavation Using Explosives, Landfill, Truck Stop And Trucking Facility.

Jim Chivers
Kyle Brown

jim@goldcommercial.net
kyle@goldcommercial.net

443.928.7522 - cell
443.425.8279 - cell

www.goldcommercial.net



Gold and Company, LLC

Commercial Real Estate in the Baltimore Metropolitan Area

4721 Benson Avenue, Halethorpe, MD 21227

Additional Pictures of Rear Warehouse



Jim Chivers
Kyle Brown

jim@goldcommercial.net
kyle@goldcommercial.net

443.928.7522 - cell
443.425.8279 - cell

www.goldcommercial.net

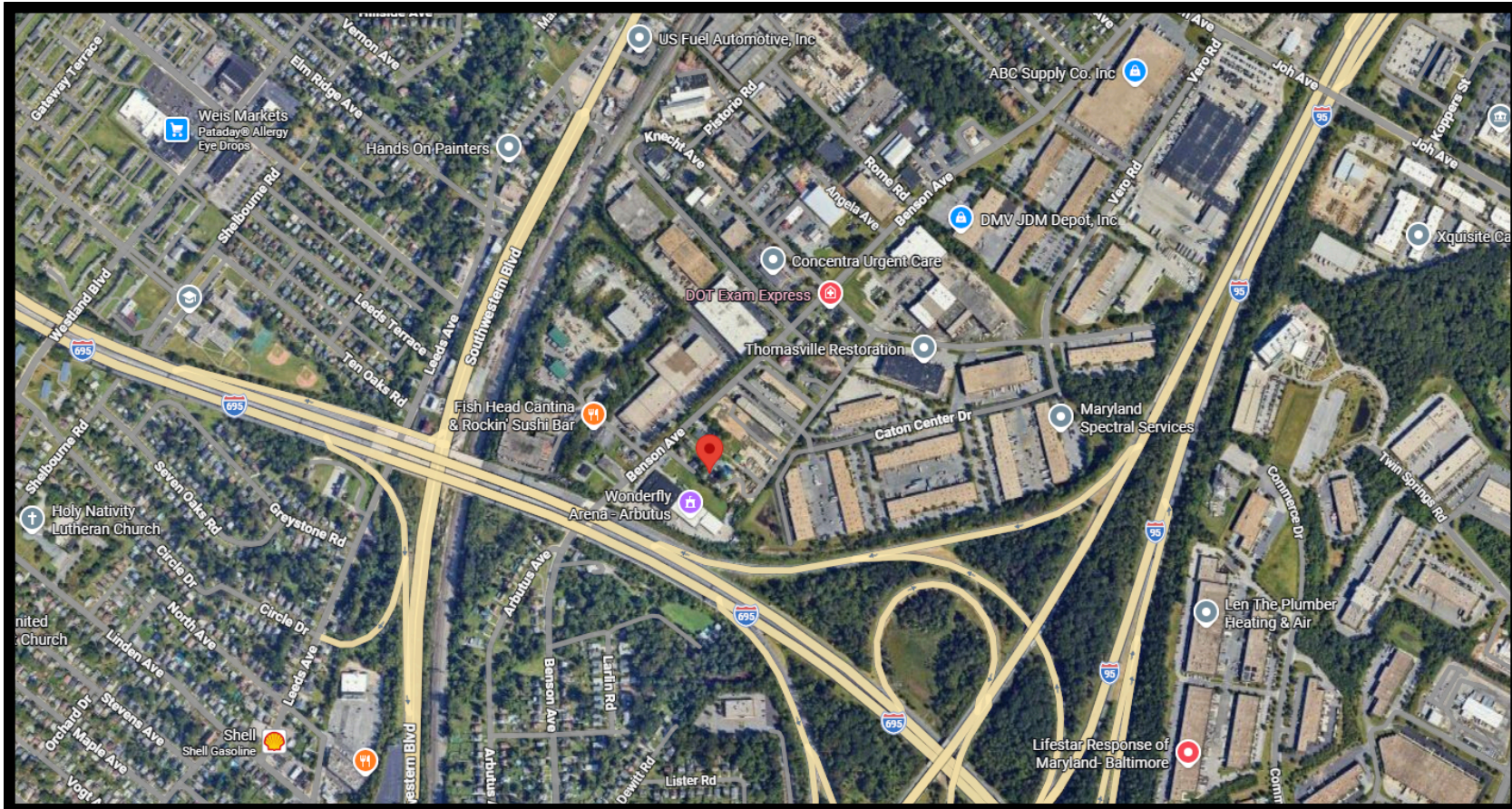


Gold and Company, LLC

Commercial Real Estate in the Baltimore Metropolitan Area

4721 Benson Avenue, Halethorpe, MD 21227

Map



Jim Chivers
Kyle Brown

jim@goldcommercial.net
kyle@goldcommercial.net

443.928.7522 - cell
443.425.8279 - cell

www.goldcommercial.net