



# Gold and Company, LLC

[www.goldcommercial.net](http://www.goldcommercial.net)

Commercial Real Estate in the Baltimore Metropolitan Area



**4601 Leeds Ave, Baltimore, MD 21229**

Jim Chivers  
Senior Vice President  
443.928.7522 - cell  
[jim@goldcommercial.net](mailto:jim@goldcommercial.net)

Will McCullough  
Vice President  
410.292.2985 - cell  
[will@goldcommercial.net](mailto:will@goldcommercial.net)

[www.goldcommercial.net](http://www.goldcommercial.net)

- Mixed-Use, Office Building FOR SALE
- +/- 3,500 sf Free-Standing Building
- Dedicated Off-Street Parking Area
- BL Zoning - (Business Local)
- Ideal for Contractor Office Building
- Residential Apartment on the Top Floor
- Great Access to I-95 and I-695
- Contact us for More Information

This Property offering is subject to change without notice. All information is deemed reliable but not guaranteed

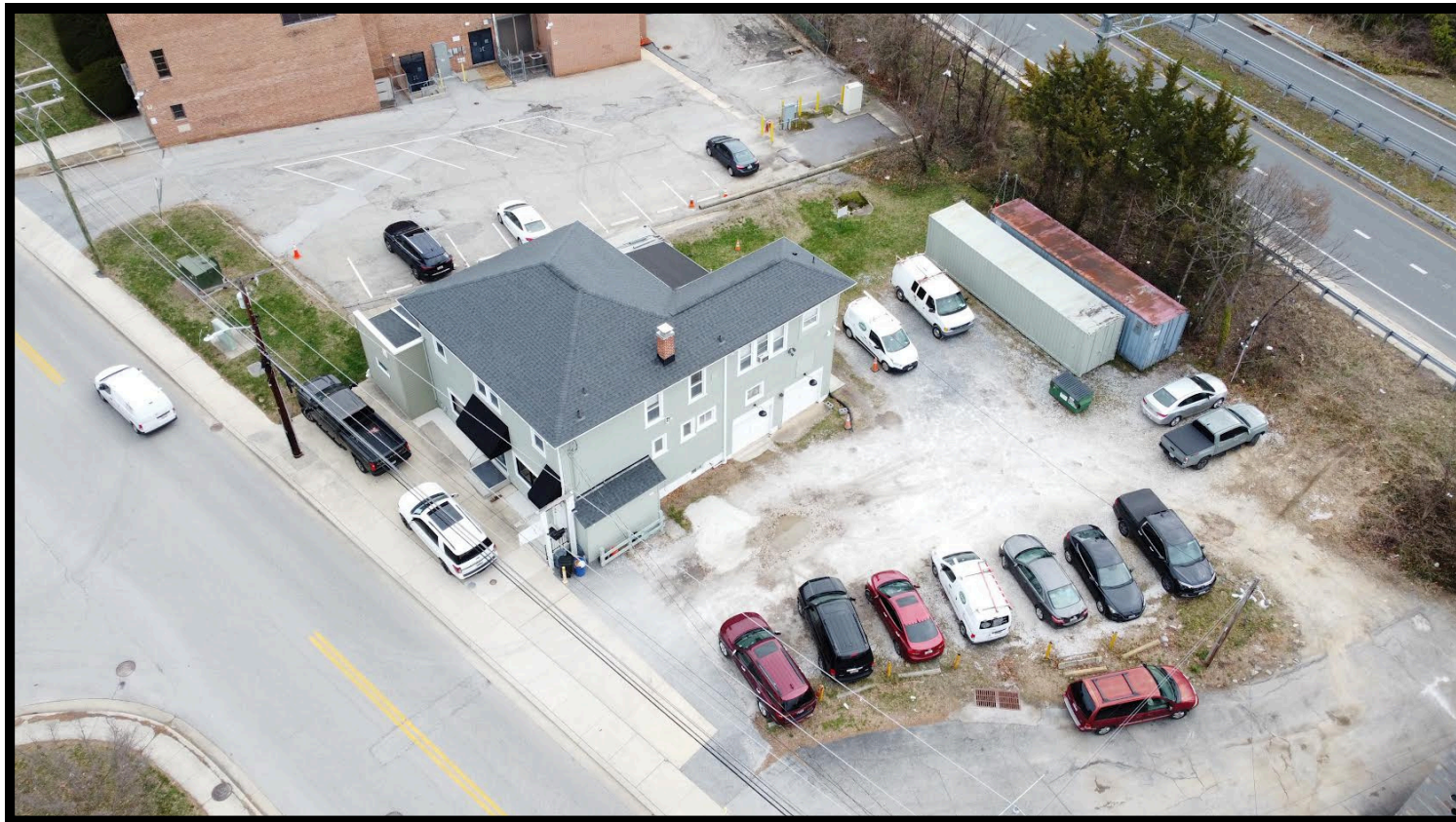


# Gold and Company, LLC

Commercial Real Estate in the Baltimore Metropolitan Area

4601 Leeds Ave, Baltimore, MD 21229

## Aerial



Jim Chivers

[jim@goldcommercial.net](mailto:jim@goldcommercial.net)

443.928.7522 - cell

Will McCullough

[will@goldcommercial.net](mailto:will@goldcommercial.net)

410.292.2985 - cell

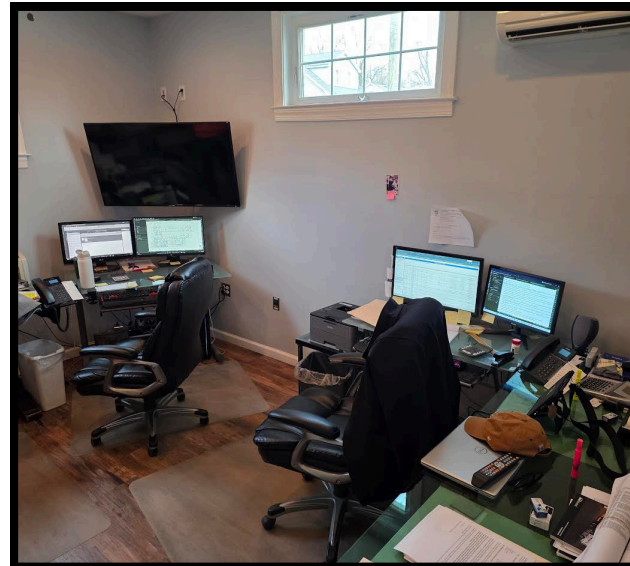
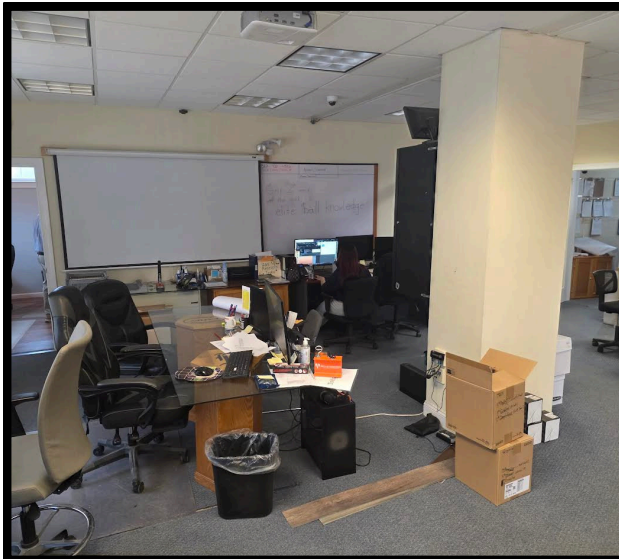
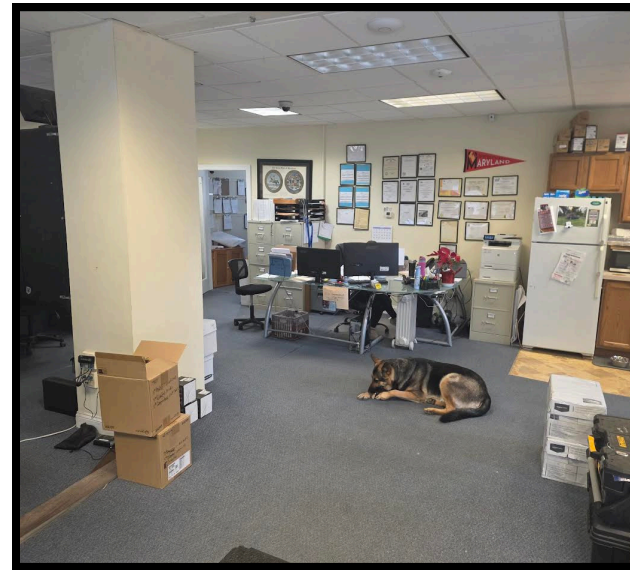
[www.goldcommercial.net](http://www.goldcommercial.net)



# Gold and Company, LLC

Commercial Real Estate in the Baltimore Metropolitan Area

## Additional Pictures



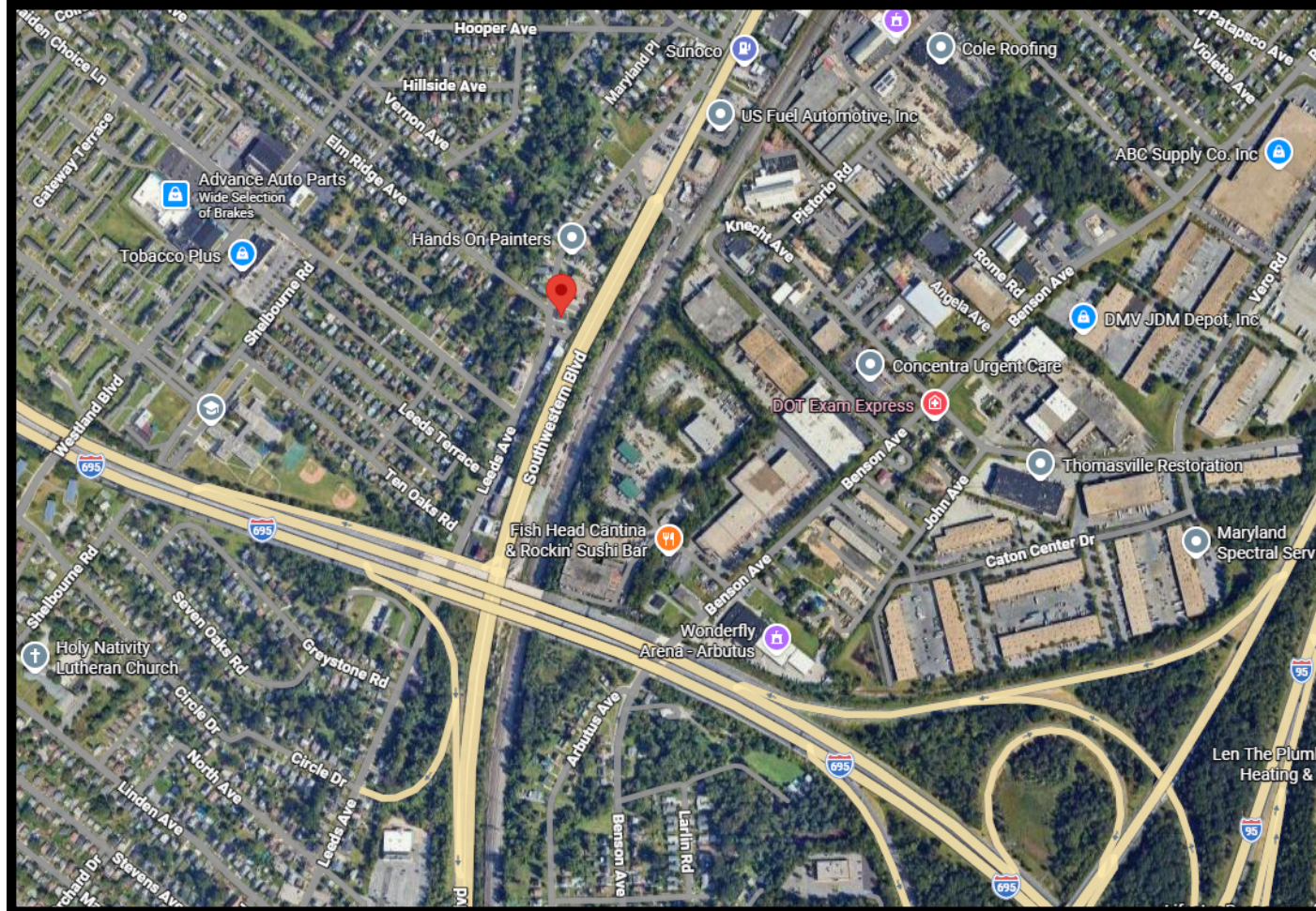


# Gold and Company, LLC

Commercial Real Estate in the Baltimore Metropolitan Area

**4601 Leeds Ave, Baltimore, MD 21229**

## Map



Jim Chivers

[jim@goldcommercial.net](mailto:jim@goldcommercial.net)

443.928.7522 - cell

Will McCullough

[will@goldcommercial.net](mailto:will@goldcommercial.net)

410.292.2985 - cell

4

[www.goldcommercial.net](http://www.goldcommercial.net)