



GOLD AND COMPANY, LLC

WWW.GOLDCOMMERCIAL.NET

Commercial Real Estate in the Baltimore Metropolitan Area



6800 Quad Ave. Baltimore, MD 21237

Gold And Company, LLC

Jim Chivers
443.928.7522 cell
jim@goldcommercial.net

Will McCullough
410.292.2985 cell
will@goldcommercial.net

www.goldcommercial.net

- **Industrial Property Available in East Baltimore**
- **+/- 11,630 sf Building**
- **4 Oversized Drive-Thru Doors**
- **3.07 Acres**
- **MH-IM Zoning (Heavy Industrial—Baltimore County)**
- **Ideal For Contractors / Maintenance / Outside Storage**
- **+/- 17-19' Clear Height**
- **+/- 1,000 sf Office**
- **Includes Separate Quonset Hut**
- **Close Access to all Main Interstates**

This property offering is subject to change without notice. All information is deemed reliable but not guaranteed.

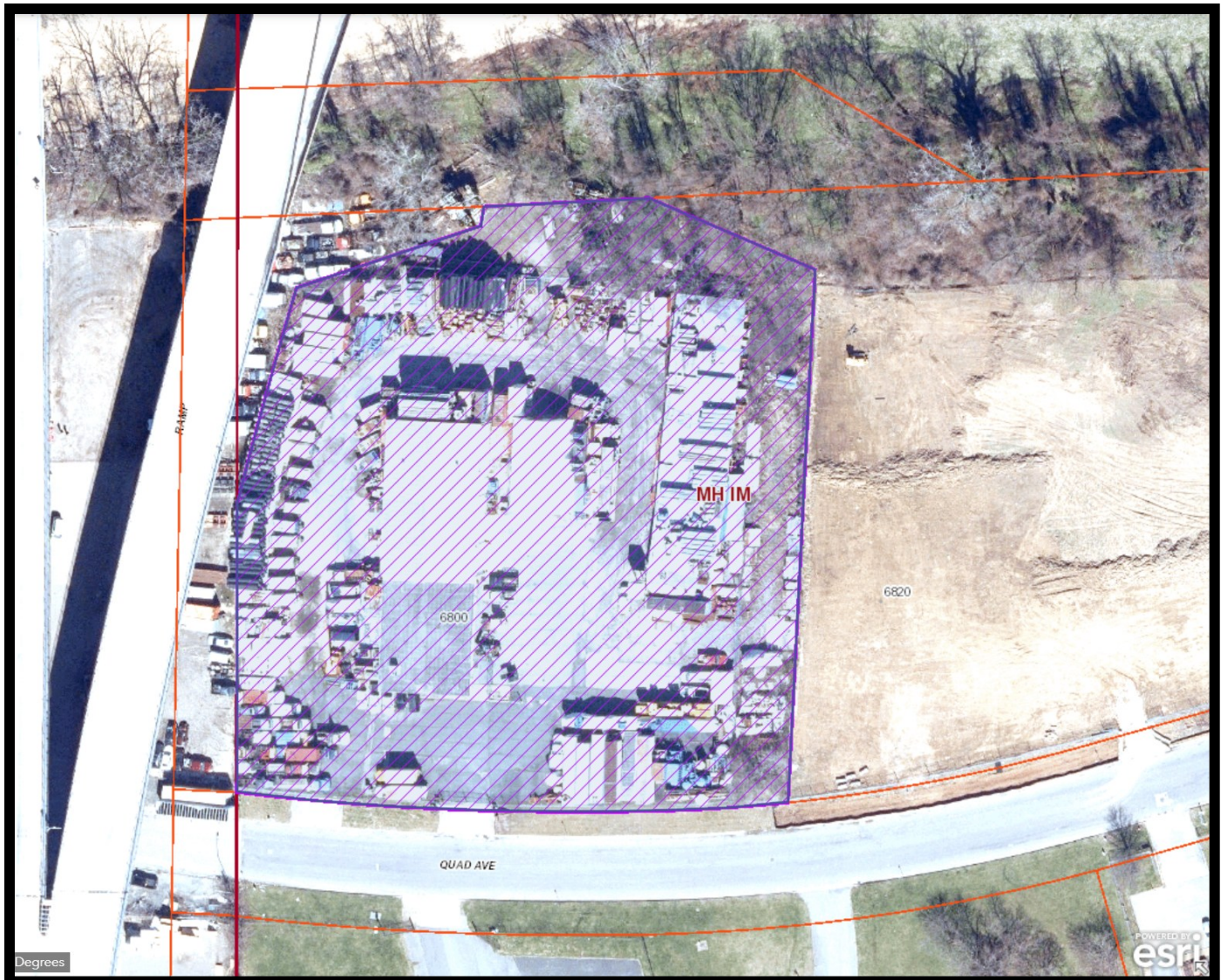


Gold And Company

Commercial Real Estate in the Baltimore Metropolitan Area

6800 Quad Ave. Baltimore, MD 21237

Zoning Map



Jim Chivers / Will McCullough
Gold And Company, LLC
5601 Newbury St.
Baltimore, MD 21209

410.578.1300 (Office)

www.goldcommercial.net

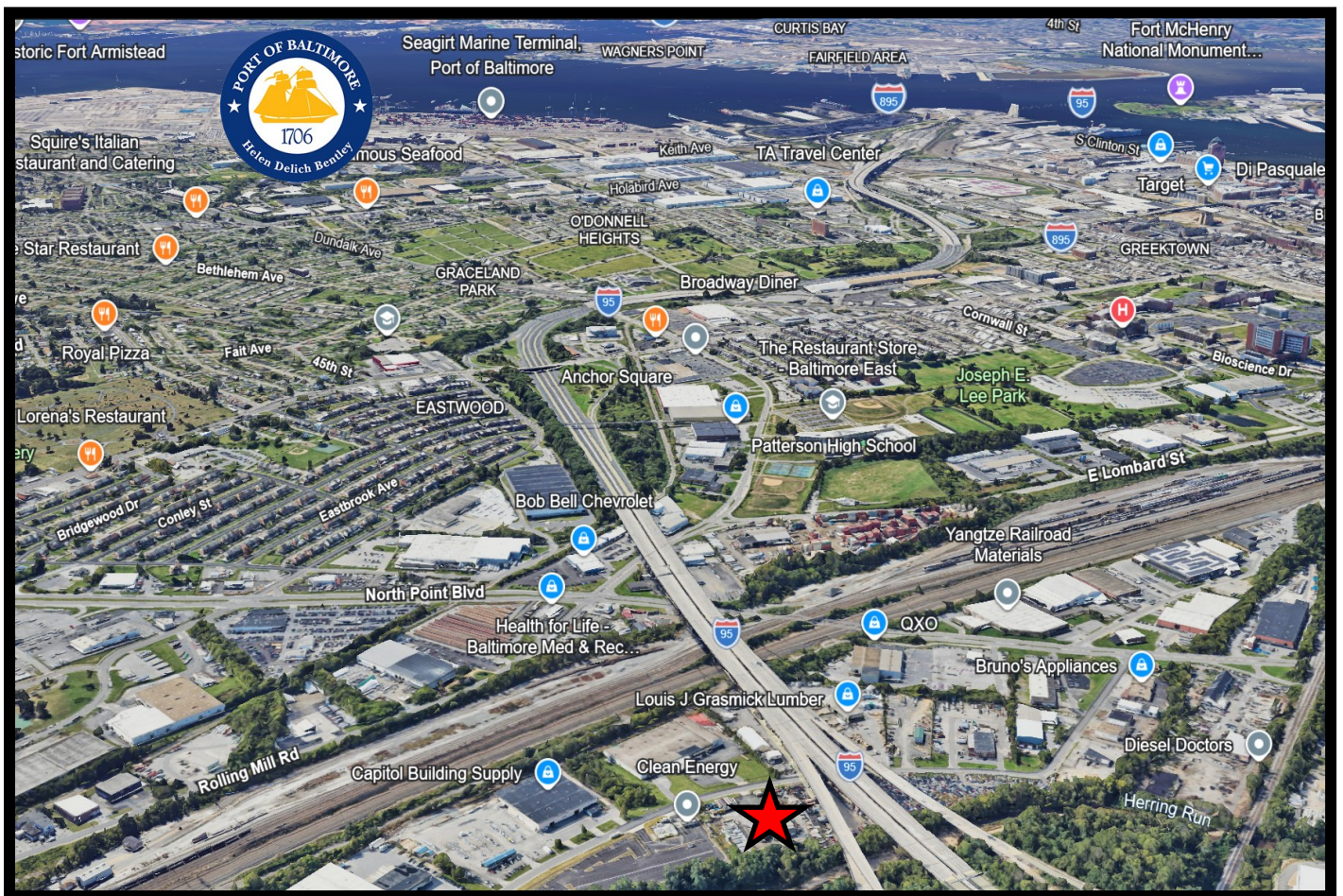


Gold And Company

Commercial Real Estate in the Baltimore Metropolitan Area

6800 Quad Ave. Baltimore, MD 21237

Block Map



Jim Chivers / Will McCullough
Gold And Company, LLC
5601 Newbury St.
Baltimore, MD 21209

410.578.1300 (Office)

www.goldcommercial.net