



# GOLD AND COMPANY, LLC

COMMERCIAL REAL ESTATE IN THE BALTIMORE METROPOLITAN AREA

## FLEX SPACE FOR LEASE



### • FLEX BUILDINGS AVAILABLE FOR LEASE

- +/- 42,200 Total SF in Three Buildings
- 3.26 Total Acres
- Building A: +/- 13,905 sf with Dock and Drive-In
- Building B: +/- 14,065 sf with 4 Docks and 2 Drive-Ins
- Building C: +/- 14,225 sf with 4 Docks and 1 Drive-In
- ML-AS and ML Zoning (Baltimore County Industrial)
- Highly Visible on Pulaski Hwy. +/- 34,000 Vehicles Day
- Contact For More Information

**11120 PULASKI HWY., WHITE MARSH, MD 21162**

**JIM CHIVERS - JIM@GOLDCOMMERCIAL.NET - 443.928.7522**

**WILL MCCULLOUGH - WILL@GOLDCOMMERCIAL.NET - 410.292.2985**

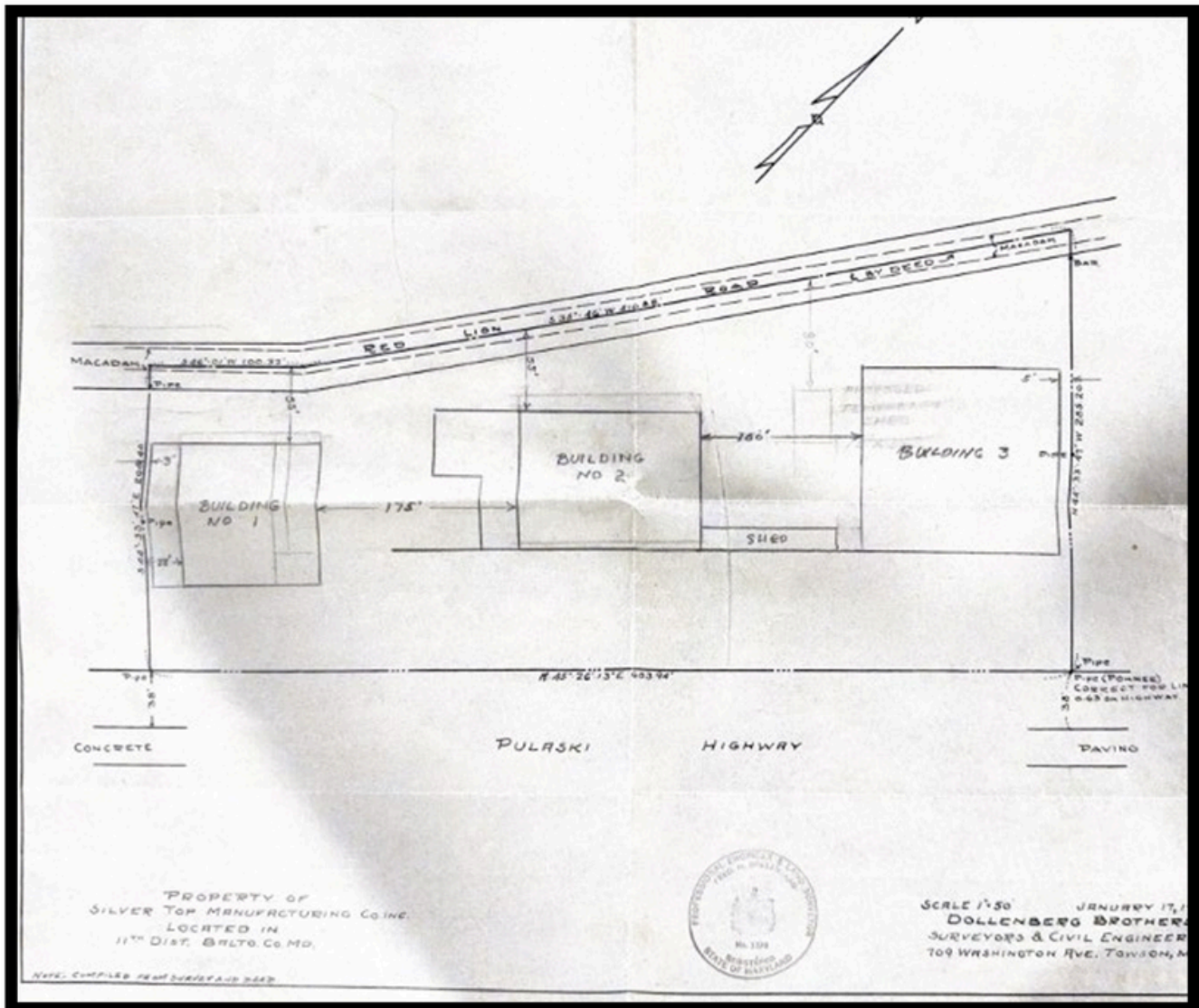


# GOLD AND COMPANY, LLC

COMMERCIAL REAL ESTATE IN THE BALTIMORE METROPOLITAN AREA

## SITE PLAN

### 11120 PULASKI HWY., WHITE MARSH, MD 21162



JIM CHIVERS - JIM@GOLDCOMMERCIAL.NET - 443.928.7522

WILL MCCULLOUGH - WILL@GOLDCOMMERCIAL.NET - 410.2922985 2

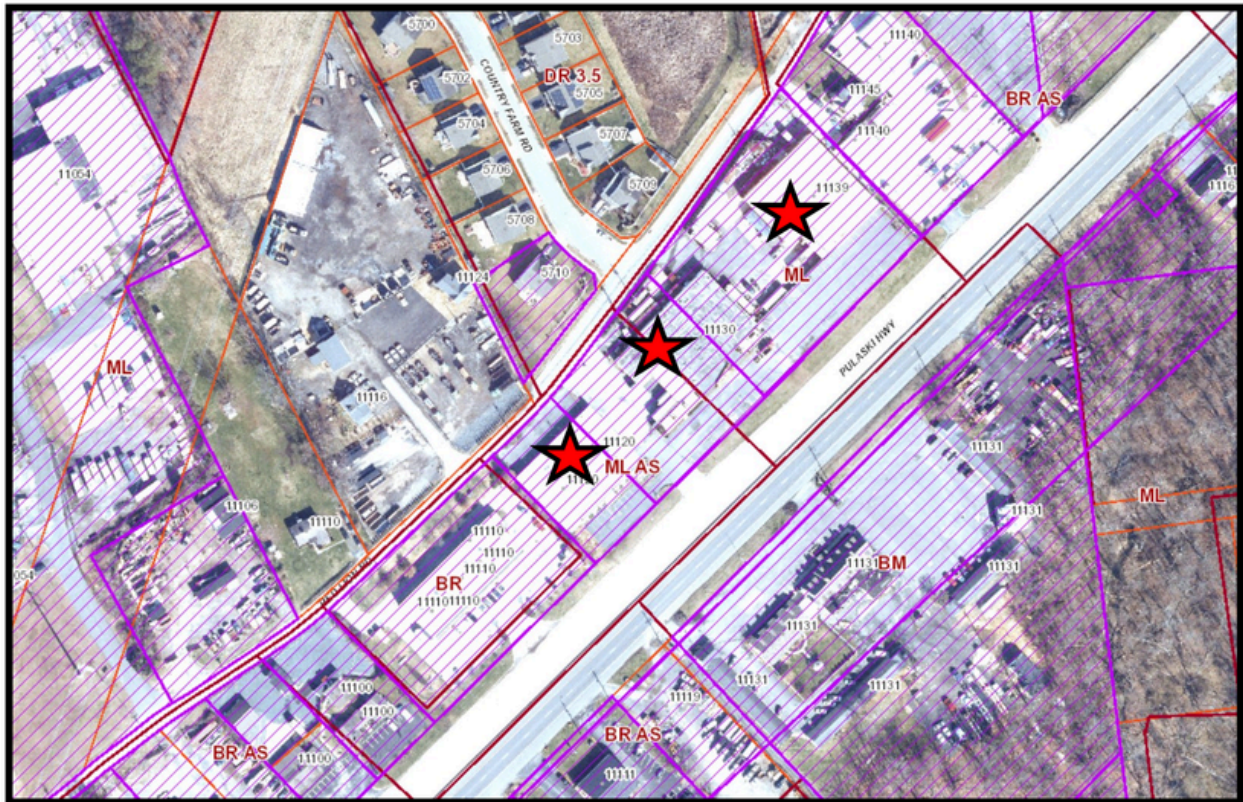


**GOLD AND COMPANY, LLC**

COMMERCIAL REAL ESTATE IN THE BALTIMORE METROPOLITAN AREA

# BALTIMORE CO. ZONING

**1722-1726 EDISON HWY, BALTIMORE, MD 21213**



**JIM CHIVERS - JIM@GOLDCOMMERCIAL.NET - 443.928.7522**

**WILL MCCULLOUGH - WILL@GOLDCOMMERCIAL.NET - 410.292.2985**



**GOLD AND COMPANY, LLC**

COMMERCIAL REAL ESTATE IN THE BALTIMORE METROPOLITAN AREA

## **CONTACT**

**Gold and Company, LLC  
5601 Newbury St.  
Baltimore, MD 21209**

**Jim Chivers  
Sr. Vice President - 443.928.7522 cell  
jim@goldcommercial.net**

**Will McCullough  
Vice President - 410.292.2985 cell  
will@goldcommercial.net**

**WWW.GOLDCOMMERCIAL.NET**