



GOLD AND COMPANY, LLC

WWW.GOLDCOMMERCIAL.NET

Commercial Real Estate in the Baltimore Metropolitan Area



4806 Benson Ave. Baltimore, MD 21227

Gold And Company, LLC

Jim Chivers
443.928.7522 cell
jim@goldcommercial.net

John Roe
410.960.9554 cell
will@goldcommercial.net

Kyle Brown
443.425.8279
kyle@goldcommercial.net

www.goldcommercial.net

- **+/- 4,000 sf Building FOR LEASE**
- **Offers Easy Access to Major Highways**
- **I-95, I-695, and Baltimore-Washington Parkway**
- **Drive-In Access**
- **Perfect for Combining Office, Storage, Showroom, or light Workshop Needs.**
- **Light Industrial Zoning**
- **Contact for More Information**

This property offering is subject to change without notice. All information is deemed reliable but not guaranteed.

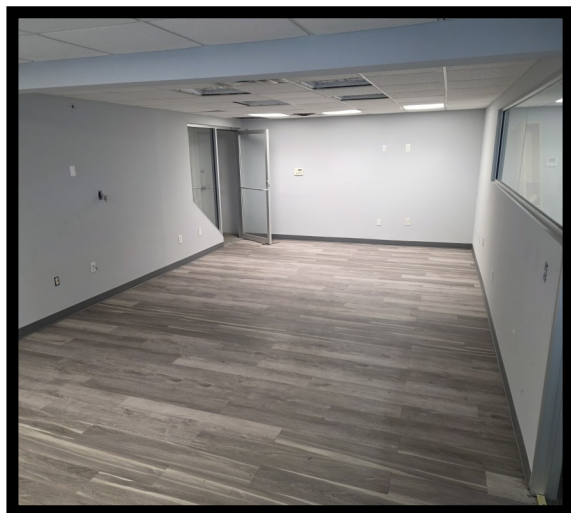


Gold And Company

Commercial Real Estate in the Baltimore Metropolitan Area

4806 Benson Ave. Baltimore, MD 21227

Additional Pictures



**Jim Chivers / John Roe / Kyle Brown
Gold And Company, LLC
5601 Newbury St.
Baltimore, MD 21209**

410.578.1300 (Office)

www.goldcommercial.net



Gold And Company

Commercial Real Estate in the Baltimore Metropolitan Area

4806 Benson Ave. Baltimore, MD 21227

Aerials

