



GOLD AND COMPANY, LLC

WWW.GOLDCOMMERCIAL.NET

Commercial Real Estate in the Baltimore Metropolitan Area



8111 and 8125 Washington Blvd., Jessup, MD 20794

For More Information:

Jim Chivers
Sr. Vice President
443.928.7522 cell
jim@goldcommercial.net

Will McCullough, SIOR
Vice President
410.292.2985 cell
will@goldcommercial.net

www.goldcommercial.net

- **14+ Acres Available on Washington Boulevard**
- **FOR SALE / LEASE**
- **800' Frontage on Washington Blvd.**
- **Providing Excellent Exposure for Signage and Branding**
- **+/- 14,000 sf Total Buildings**
- **CE-CLI (Corridor Employment—Continuing Light Industrial)**
- **Zoning Allows for a Wide Range of Commercial Uses**
- **Increasing Demand in the Howard County Submarket**
- **Equipped with Essential Utilities to Support Commercial Operations**
- **Convenient Access to Major Transportation Routes**
- **Contact For More Information**

This property offering is subject to change without notice. All information is deemed reliable but not guaranteed.



Gold And Company

Commercial Real Estate in the Baltimore Metropolitan Area

Additional Pictures



**Jim Chivers / Will McCullough
Gold And Company, LLC
5601 Newbury St.
Baltimore, MD 21209**

410.578.1300 (Office)

www.goldcommercial.net

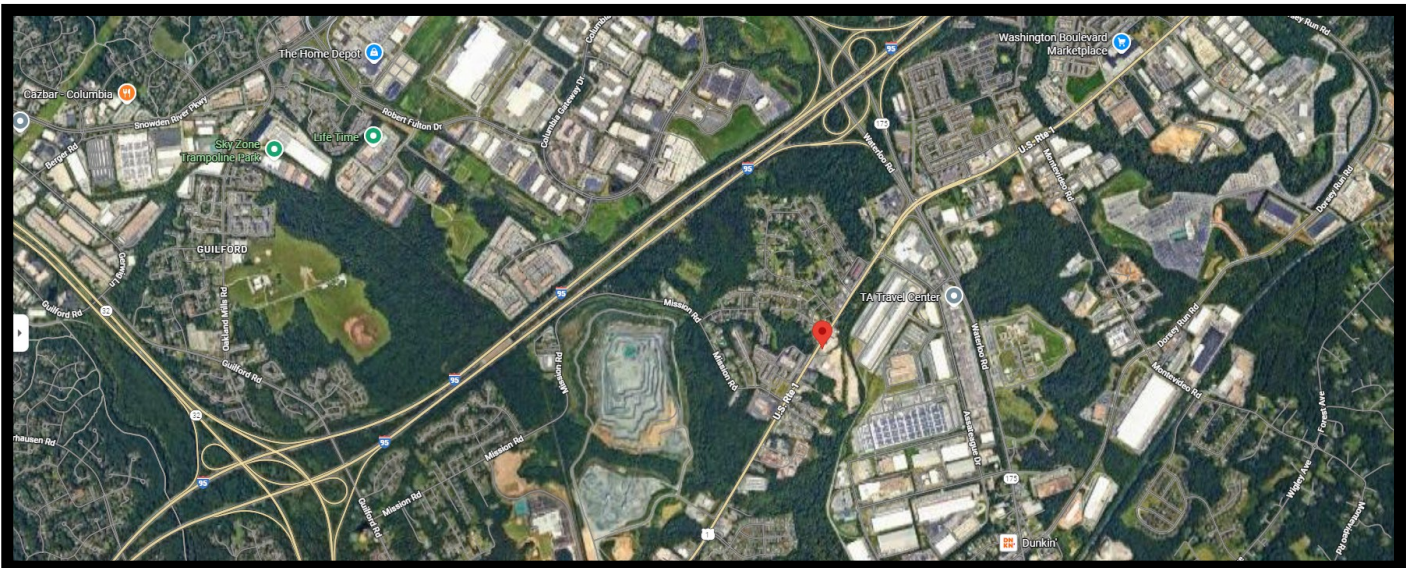


Gold And Company

Commercial Real Estate in the Baltimore Metropolitan Area

8111 and 8125 Washington Blvd., Jessup, MD

Aerial



Jim Chivers / Will McCullough
Gold And Company, LLC
5601 Newbury St.
Baltimore, MD 21209

410.578.1300 (Office)

www.goldcommercial.net