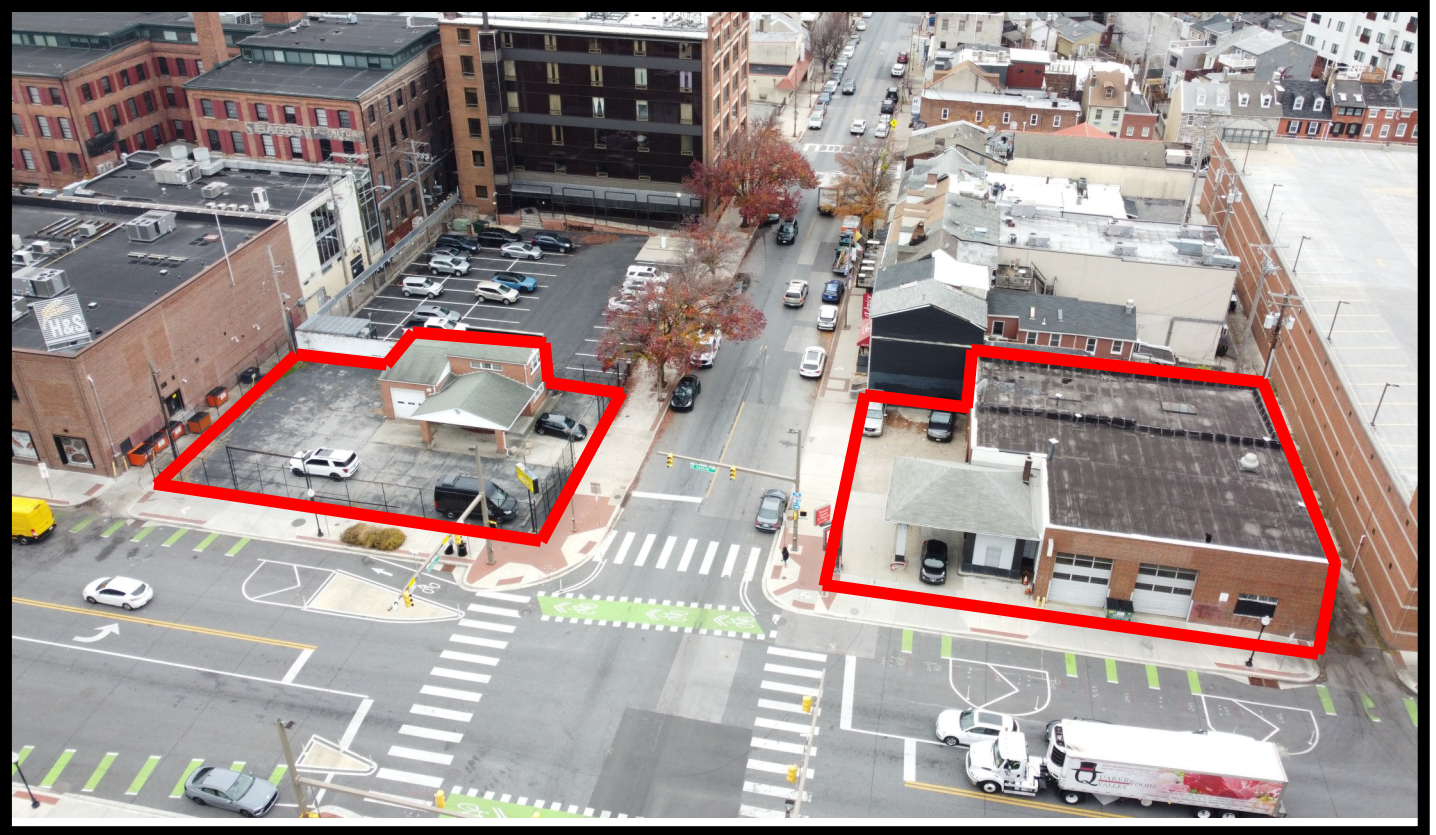




GOLD AND COMPANY

WWW.GOLDCOMMERCIAL.NET

Commercial Real Estate in the Baltimore Metropolitan Area



1021 and 1022 Eastern Ave. Baltimore, MD 21231

For More Information:

Jim Chivers
Sr. Vice President
443.928.7522 cell
jim@goldcommercial.net

Alex Simone
Vice President
443.845.4413 cell
alex@goldcommercial.net

www.goldcommercial.net

- **Two Parcels in Harbor East area Available FOR SALE**
- **1021 Eastern Ave.**
 - **+/- 1,000 sf Building on +/- 6,700 sf Land Area**
- **1022 Eastern Ave.**
 - **+/- 5,000 sf Building on +/- 7,900 sf Land Area**
- **C-2 Zoning, Medium Commercial, Mixed Use**
- **Located at the Intersection of Central Ave and Eastern Ave.**
- **Immediate Access to High-End Amenities**
- **High Visibility Ensures Maximum Exposure**
- **Contact us For More Information**

This property offering is subject to change without notice. All information is deemed reliable but not guaranteed.



Gold And Company

Commercial Real Estate in the Baltimore Metropolitan Area

Aerial



Jim Chivers / Alex Simone
Gold And Company, LLC
5601 Newbury St.
Baltimore, MD 21209

410.578.1300 (Office)

www.goldcommercial.net

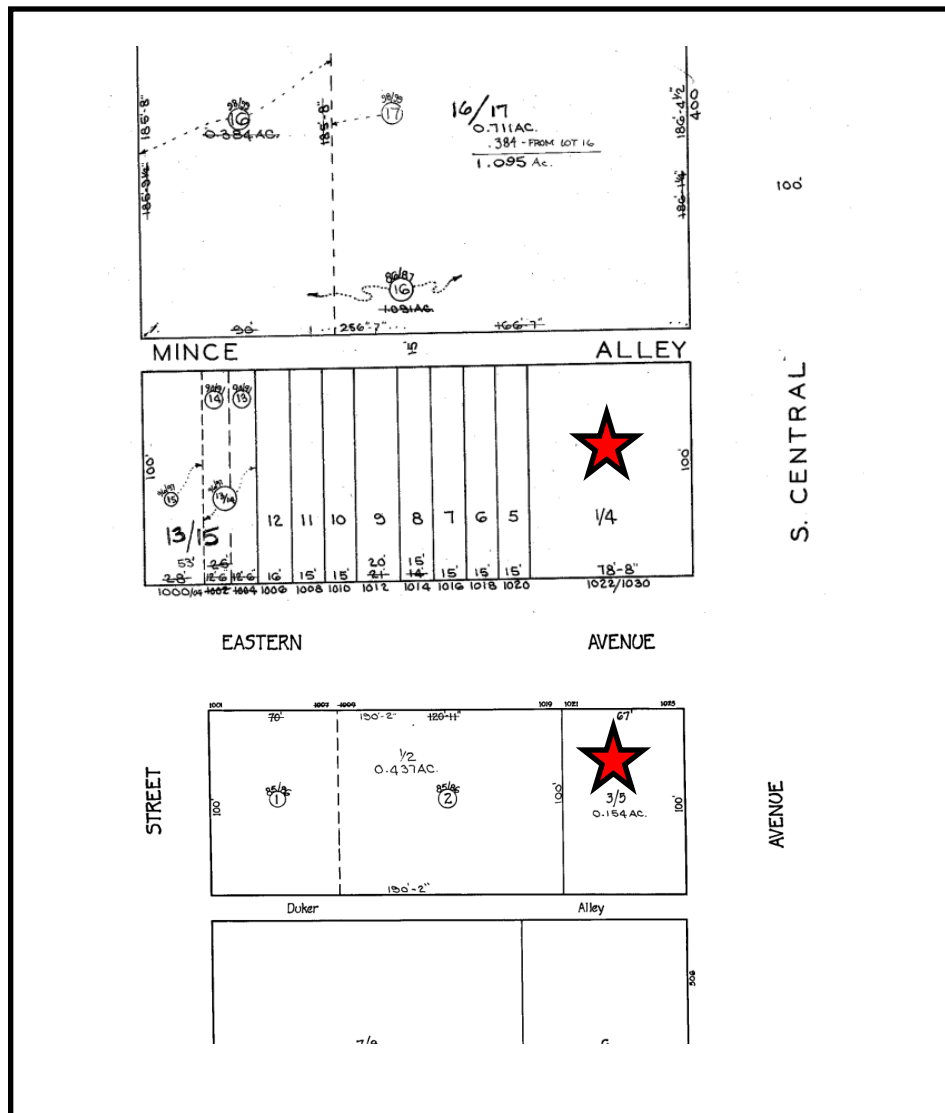


Gold And Company

Commercial Real Estate in the Baltimore Metropolitan Area

1021 and 1022 Eastern Ave. Baltimore, MD

Block Map



Jim Chivers / Alex Simone
Gold And Company, LLC
5601 Newbury St.
Baltimore, MD 21209

410.578.1300 (Office)

www.goldcommercial.net

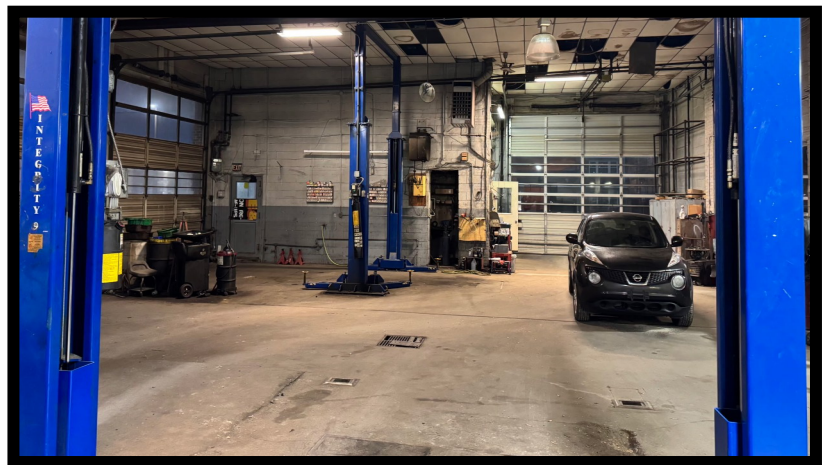


Gold And Company

Commercial Real Estate in the Baltimore Metropolitan Area

1021 and 1022 Eastern Ave. Baltimore, MD

Interior Pictures



Jim Chivers / Alex Simone
Gold And Company, LLC
5601 Newbury St.
Baltimore, MD 21209

410.578.1300 (Office)

www.goldcommercial.net