



GOLD AND COMPANY, LLC

WWW.GOLDCOMMERCIAL.NET

Commercial Real Estate in the Baltimore Metropolitan Area



1748 Russell St. Baltimore MD 21230

Gold And Company, LLC

Jim Chivers
443.928.7522 cell
jim@goldcommercial.net

John Roe
410.960.9554 cell
john@goldcommercial.net

www.goldcommercial.net

- **Freestanding Property with Parking Available**
- **+/- 3,500 sf Building**
- **13,100 sf Land Area in Two Parcels**
- **C-2 Zoning**
- **HUB Zone**
- **Multiple Curb Cuts to Access Property**
- **Located at a Signalized Intersection**
- **Close Proximity to Major Baltimore Landmarks**
- **Easy Access to I-95**
- **Call For More Information**

This property offering is subject to change without notice. All information is deemed reliable but not guaranteed.



Gold And Company

Commercial Real Estate in the Baltimore Metropolitan Area

1748 Russell St. Baltimore MD 21230

Additional Pictures



Jim Chivers / John Roe
Gold And Company, LLC
5601 Newbury St.
Baltimore, MD 21209

410.578.1300 (Office)

www.goldcommercial.net



1748 Russell St. Baltimore MD 21230

www.goldcommercial.net

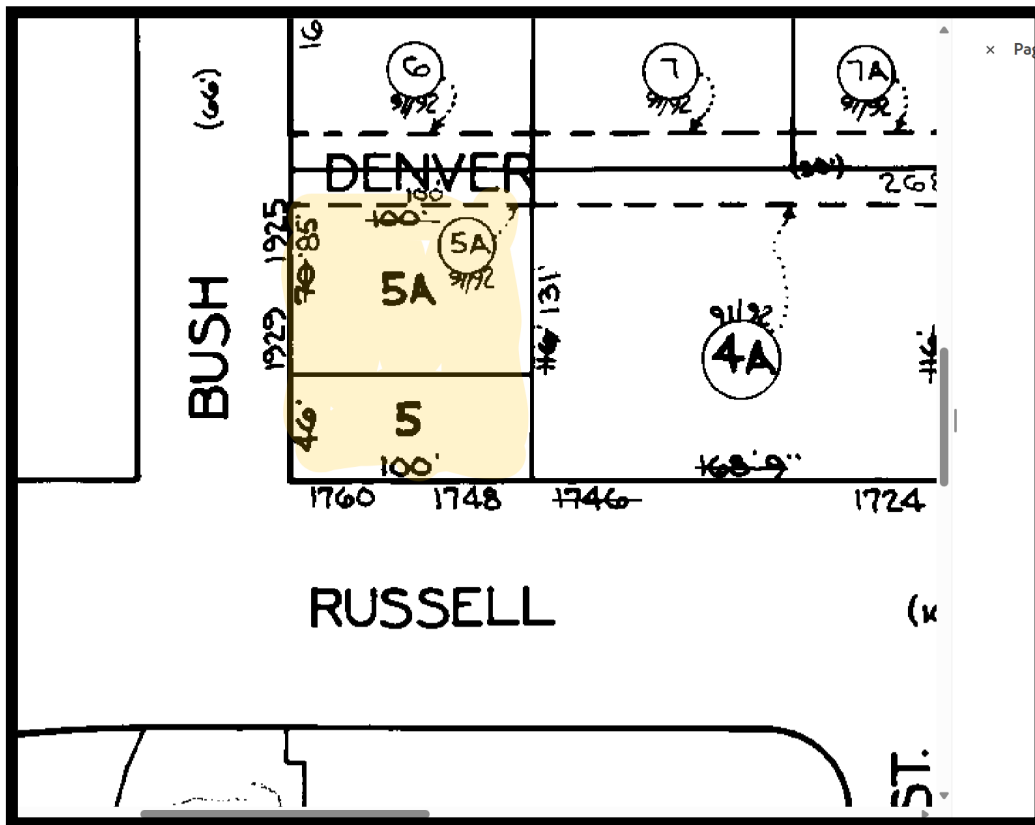


Gold And Company

Commercial Real Estate in the Baltimore Metropolitan Area

1748 Russell St. Baltimore MD 21230

Block Map



Jim Chivers / John Roe
Gold And Company, LLC
5601 Newbury St.
Baltimore, MD 21209

410.578.1300 (Office)

www.goldcommercial.net