



GOLD AND COMPANY, LLC

WWW.GOLDCOMMERCIAL.NET

Commercial Real Estate in the Baltimore Metropolitan Area



1415 Washington Blvd., Baltimore, MD 21230

Gold And Company, LLC

**5601 Newbury St.
Baltimore, MD 21209**

For More Information:

**Jim Chivers
Sr. Vice President
443.928.7522 cell
jim@goldcommercial.net**

**Will McCullough, SIOR
Vice President
410.292.2985 cell
will@goldcommercial.net**

www.goldcommercial.net

- **Turn-Key Sports Bar / Restaurant FOR SALE**
- **+/- 4,500 sf**
- **Spacious Two-Story Restaurant**
- **Includes Full Kitchen and Equipment, Walk-In's**
- **Good Frontage on Washington Blvd.**
- **Includes Liquor License**
- **Established Bar Layout**
- **Close Proximity to Popular Attractions**
- **Contact For More Information**

This property offering is subject to change without notice. All information is deemed reliable but not guaranteed.



Gold And Company

Commercial Real Estate in the Baltimore Metropolitan Area

1415 Washington Blvd., Baltimore, MD 21230

Additional Photos



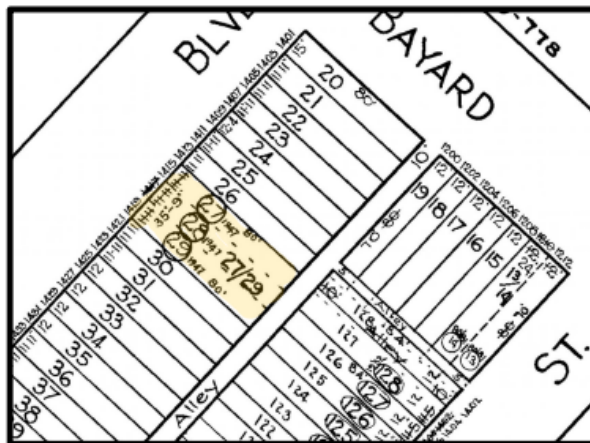
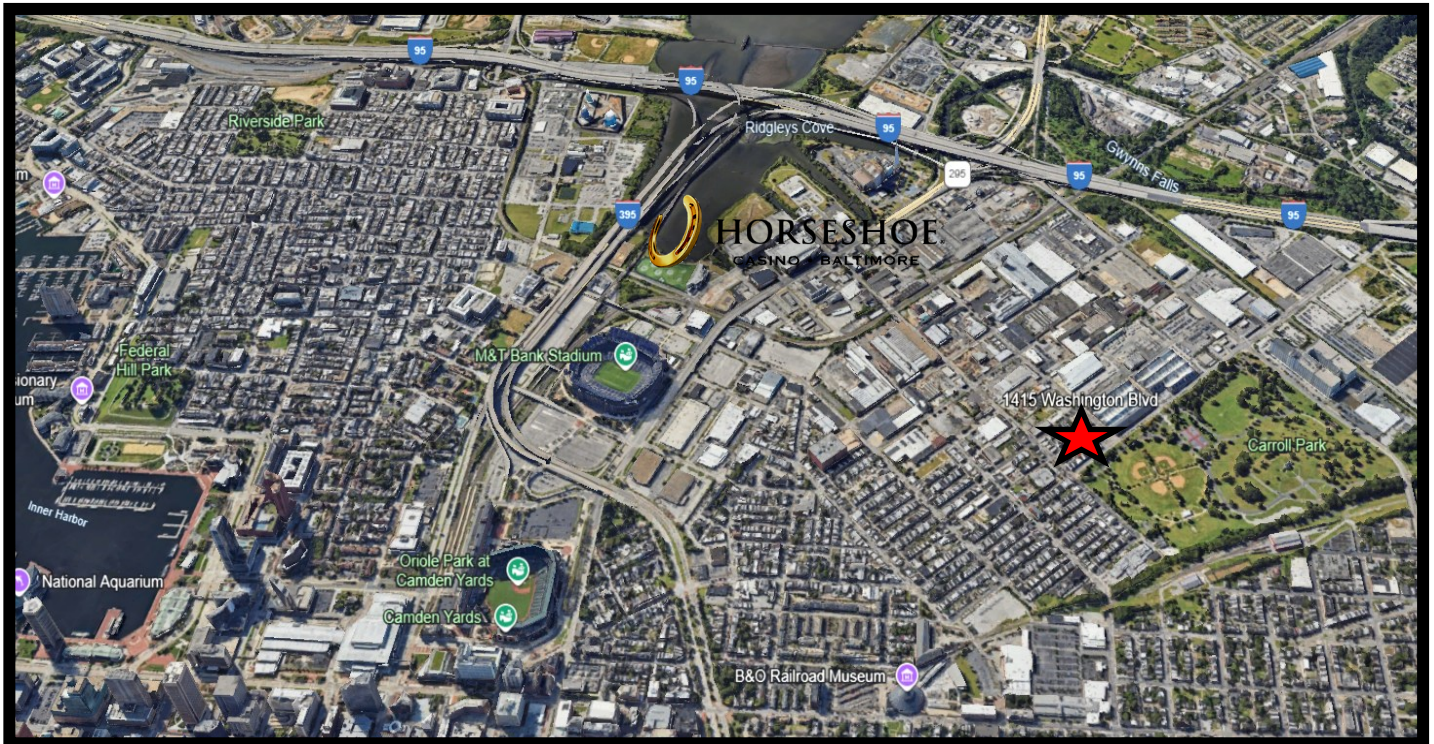


Gold And Company

Commercial Real Estate in the Baltimore Metropolitan Area

1415 Washington Blvd., Baltimore, MD 21230

Aerial



Jim Chivers / Will McCullough
Gold And Company, LLC
5601 Newbury St.
Baltimore, MD 21209

410.578.1300 (Office)

www.goldcommercial.net