



# GOLD AND COMPANY, LLC

[WWW.GOLDCOMMERCIAL.NET](http://WWW.GOLDCOMMERCIAL.NET)

*Commercial Real Estate in the Baltimore Metropolitan Area*



## **1121 Riverside Ave. Baltimore, MD 21230**

**For More Information:**

**Jim Chivers**  
**Sr. Vice President**  
**443.928.7522 cell**  
**[jim@goldcommercial.net](mailto:jim@goldcommercial.net)**

**Will McCullough, SIOR**  
**Vice President**  
**410.292.2985 cell**  
**[will@goldcommercial.net](mailto:will@goldcommercial.net)**

**[www.goldcommercial.net](http://www.goldcommercial.net)**

- **Building Located in the Heart of Federal Hill FOR SALE**
- **+/- 10,204 sf**
- **Includes Off Street Parking Area / Playground**
- **Two Story Daycare / School Building**
- **Rear Assembly Building**
- **Surrounded by Densely Populated Residential Area**
- **Amenities within Walking Distance**
- **Very Good Condition**
- **Call For More Information**

This property offering is subject to change without notice. All information is deemed reliable but not guaranteed.





# ***Gold And Company***

***Commercial Real Estate in the Baltimore Metropolitan Area***

## **Additional Pictures**



**Jim Chivers / Will McCullough**  
**Gold And Company, LLC**  
**5601 Newbury St.**  
**Baltimore, MD 21209**

**410.578.1300 (Office)**

**[www.goldcommercial.net](http://www.goldcommercial.net)**





***Gold And Company***

***Commercial Real Estate in the Baltimore Metropolitan Area***

**1121 Riverside Ave. Baltimore, MD 21230**

## **Additional Aerials**



**Jim Chivers / Will McCullough**  
**Gold And Company, LLC**  
**5601 Newbury St.**  
**Baltimore, MD 21209**

**410.578.1300 (Office)**

**[www.goldcommercial.net](http://www.goldcommercial.net)**

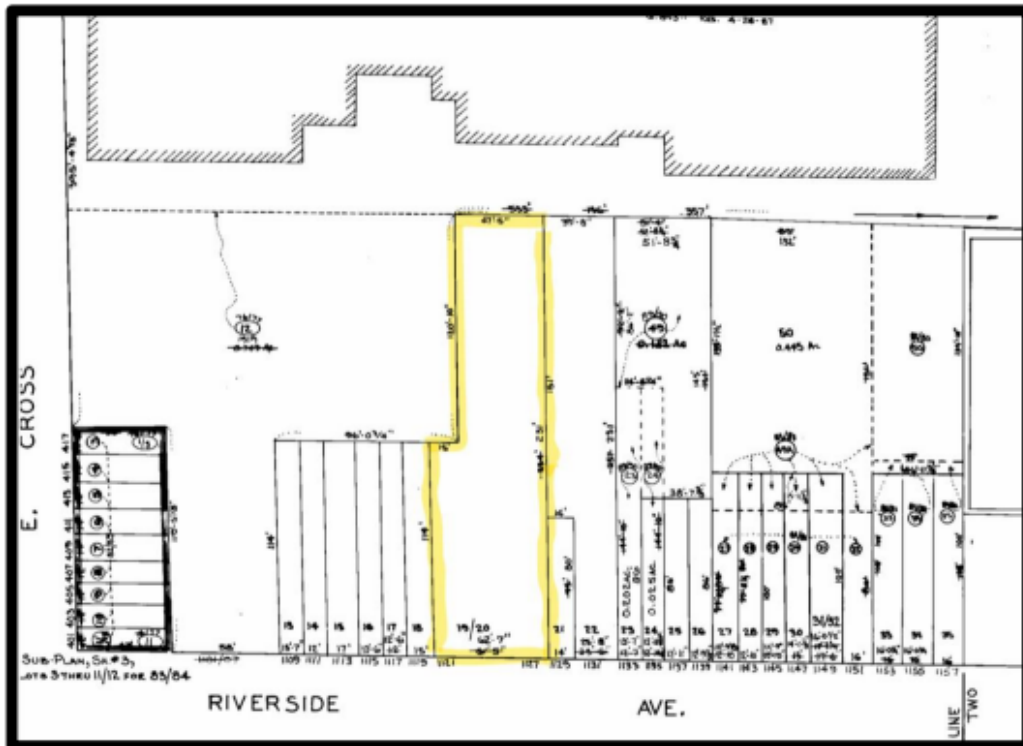


# ***Gold And Company***

***Commercial Real Estate in the Baltimore Metropolitan Area***

**1121 Riverside Ave. Baltimore, MD 21230**

## **Block Map**



**Jim Chivers / Will McCullough**  
**Gold And Company, LLC**  
**5601 Newbury St.**  
**Baltimore, MD 21209**

**410.578.1300 (Office)**  
**[www.goldcommercial.net](http://www.goldcommercial.net)**