



# GOLD AND COMPANY, LLC

[WWW.GOLDCOMMERCIAL.NET](http://WWW.GOLDCOMMERCIAL.NET)

*Commercial Real Estate in the Baltimore Metropolitan Area*



**6526 Baltimore Ave. Baltimore, MD 21222**

**For More Information:**

**Jim Chivers**  
**Sr. Vice President**  
**443.928.7522 cell**  
**[jim@goldcommercial.net](mailto:jim@goldcommercial.net)**

**Will McCullough, SIOR**  
**Vice President**  
**410.292.2985 cell**  
**[will@goldcommercial.net](mailto:will@goldcommercial.net)**

**[www.goldcommercial.net](http://www.goldcommercial.net)**

- **Contractors Yard and Maintenance Building**
- **FOR SALE**
- **+/- 3,180 sf Drive-In Warehouse w/ Office**
- **3 Phase Power**
- **+/- 12' Drive-In Door**
- **0.66 Acre—Fenced, Level, and Lit Lot**
- **I-1 Zoning**
- **Adjacent to Dundalk Marine Port**
- **Contact For More Information**

This property offering is subject to change without notice. All information is deemed reliable but not guaranteed.

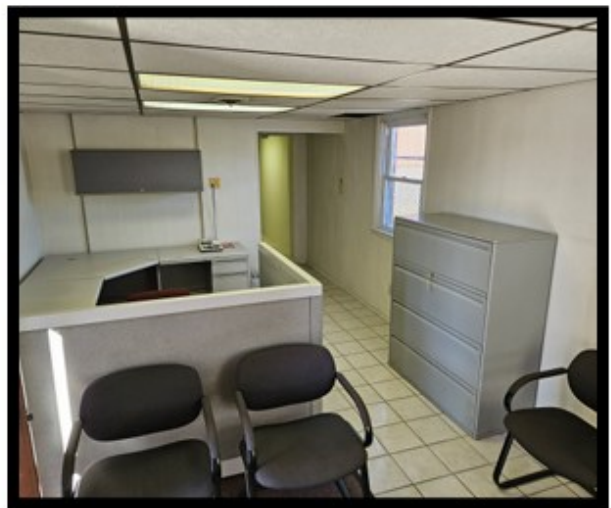




# ***Gold And Company***

***Commercial Real Estate in the Baltimore Metropolitan Area***

## **Additional Pictures**



**Jim Chivers / Will McCullough**  
**Gold And Company, LLC**  
**5601 Newbury St.**  
**Baltimore, MD 21209**

**410.578.1300 (Office)**

**[www.goldcommercial.net](http://www.goldcommercial.net)**



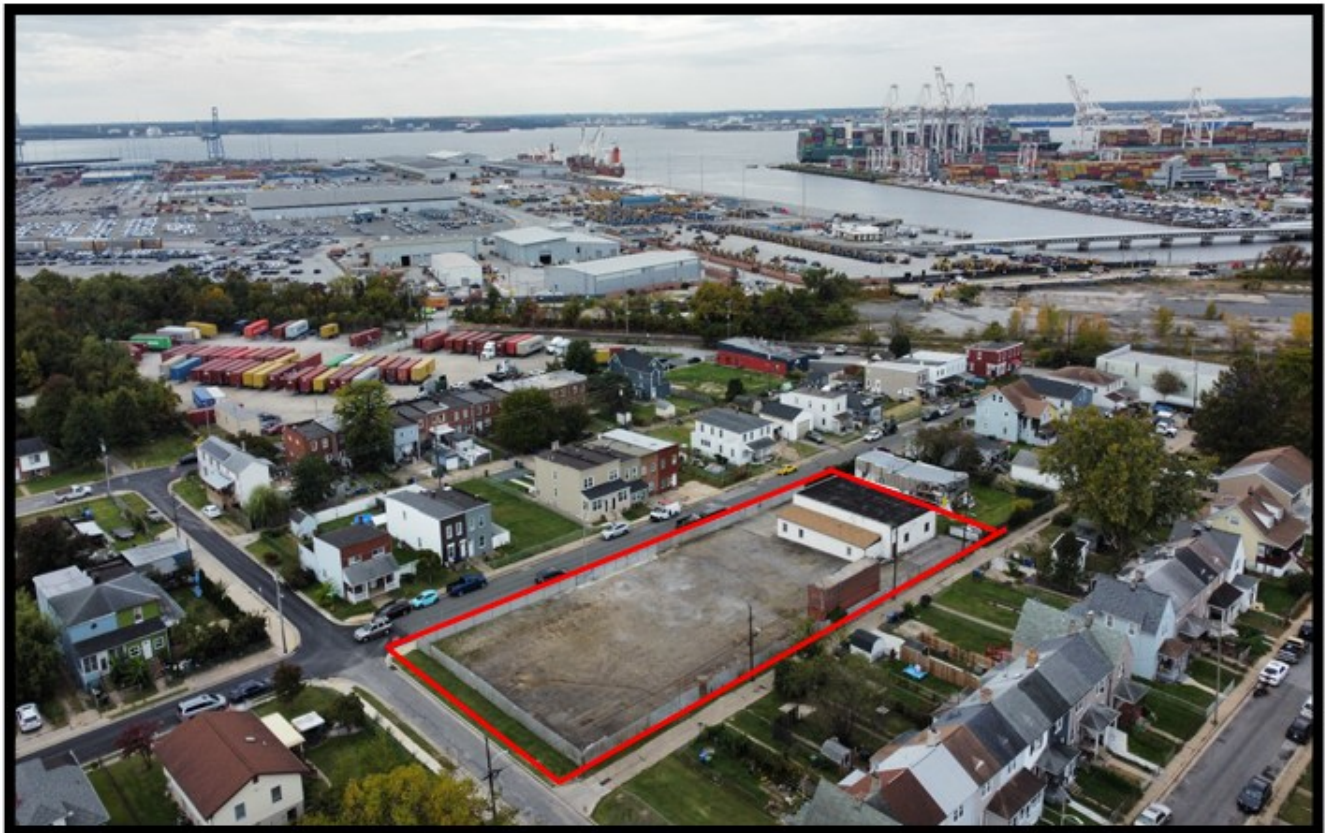


# ***Gold And Company***

***Commercial Real Estate in the Baltimore Metropolitan Area***

**6526 Baltimore Ave. Baltimore, MD 21222**

## **Aerial**



**Jim Chivers / Will McCullough  
Gold And Company, LLC  
5601 Newbury St.  
Baltimore, MD 21209**

**410.578.1300 (Office)**

**[www.goldcommercial.net](http://www.goldcommercial.net)**