



GOLD AND COMPANY, LLC

WWW.GOLDCOMMERCIAL.NET

Commercial Real Estate in the Baltimore Metropolitan Area



1227 Bush St. Baltimore, MD 21230

Gold And Company, LLC

5601 Newbury St.
Baltimore, MD 21209

For More Information:

Jim Chivers
Sr. Vice President
443.928.7522 cell
jim@goldcommercial.net

Will McCullough, SIOR
Vice President
410.292.2985 cell
will@goldcommercial.net

www.goldcommercial.net

- +/- 18,606 sf Warehouse **FOR SALE**
- Ideal for Fabrication / Light Manufacturing
- 5 Drive-In Doors
- Two (2) Five (5) Ton Overhead Cranes
- I-1 Zoning—Industrial Zoning
- Qualified HUB and Enterprise Zone Locations
- Excellent Access to I-95 / 295
- +/- 20' - 30' Ceiling Height
- **Contact For More Information**

This property offering is subject to change without notice. All information is deemed reliable but not guaranteed.

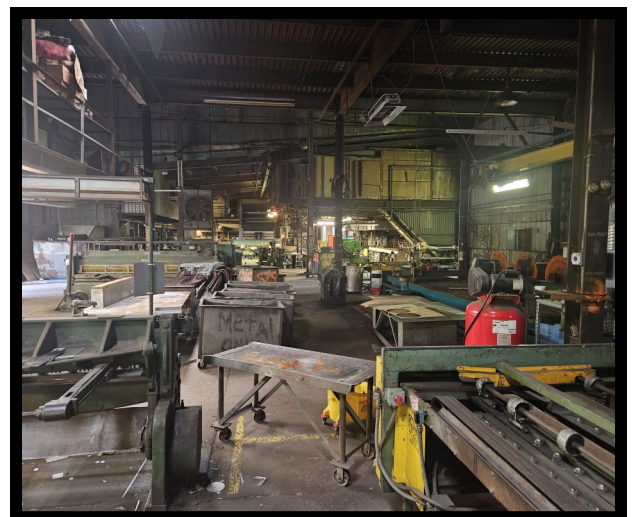
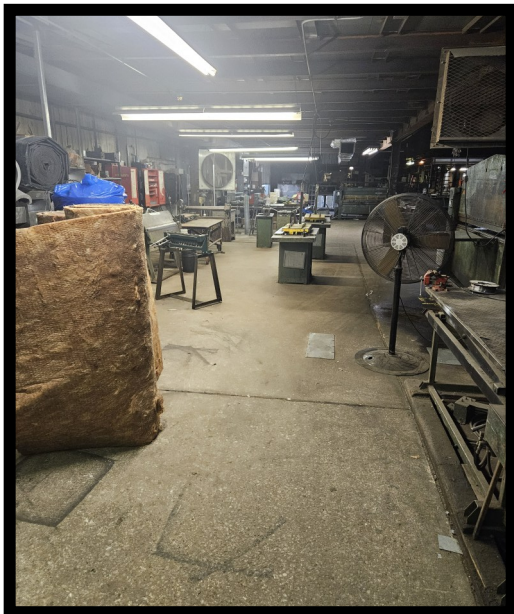


Gold And Company

Commercial Real Estate in the Baltimore Metropolitan Area

1227 Bush St. Baltimore, MD 21230

Pictures



**Jim Chivers / Will McCullough
Gold And Company, LLC
5601 Newbury St.
Baltimore, MD 21209**

410.578.1300 (Office)

www.goldcommercial.net

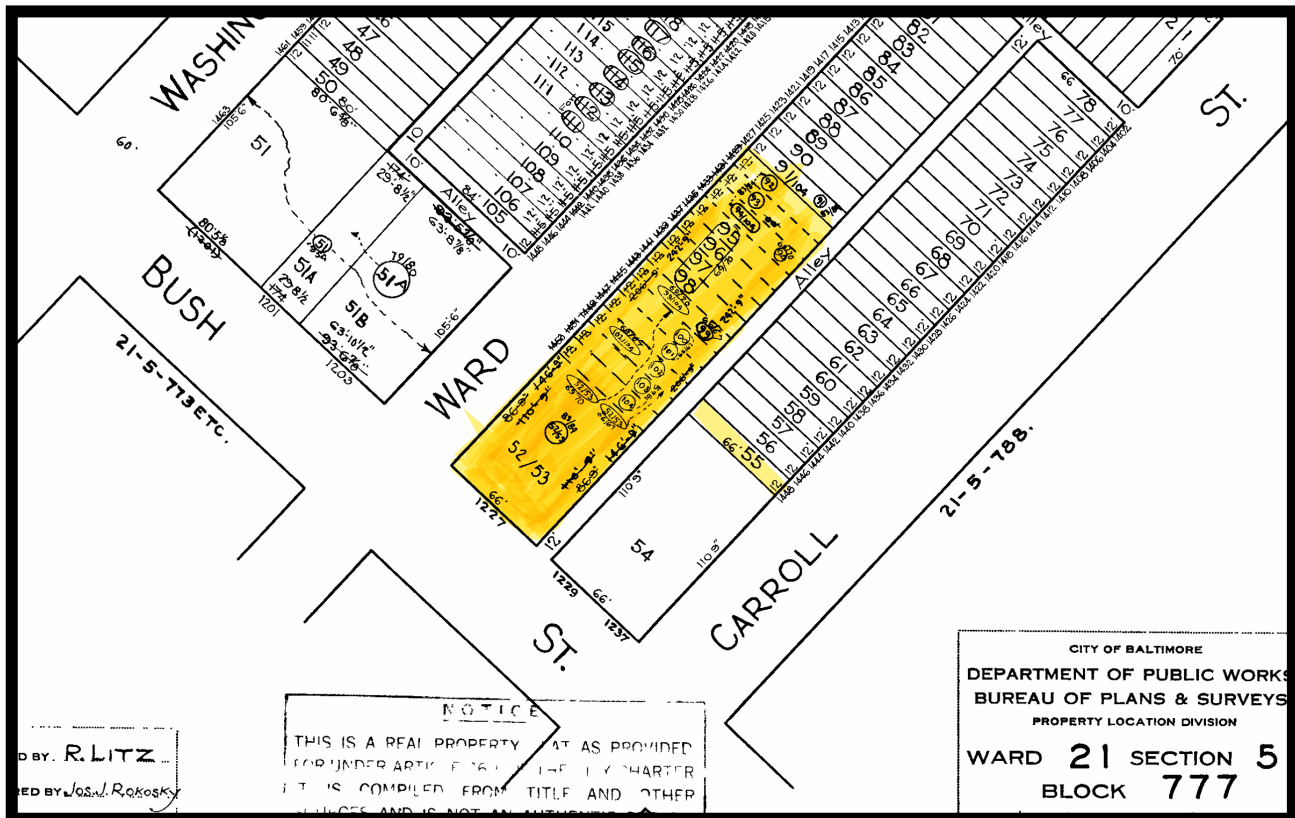


Gold And Company

Commercial Real Estate in the Baltimore Metropolitan Area

1227 Bush St. Baltimore, MD 21230

Block Map



Jim Chivers / Will McCullough
Gold And Company, LLC
5601 Newbury St.
Baltimore, MD 21209

410.578.1300 (Office)

www.goldcommercial.net

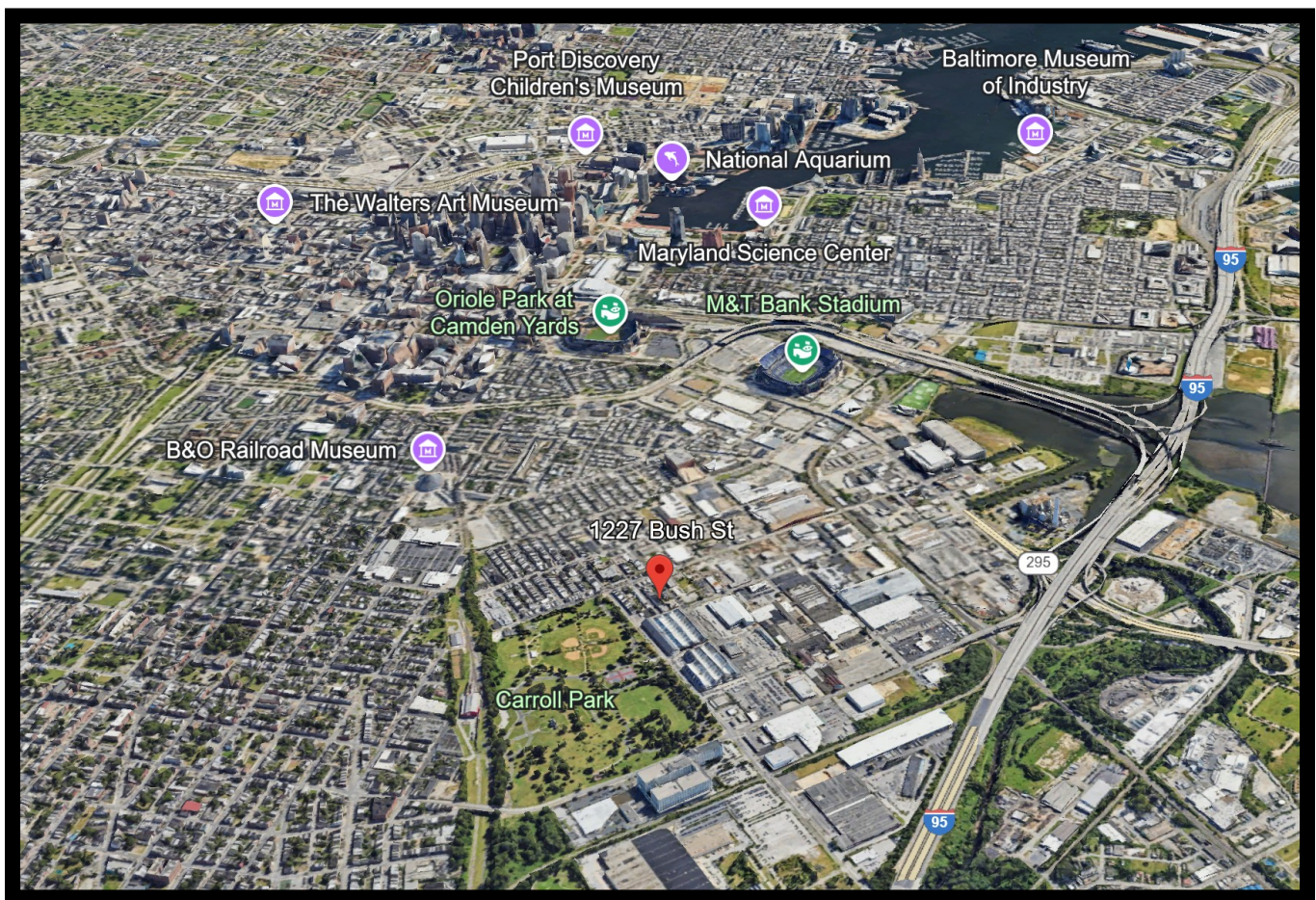


Gold And Company

Commercial Real Estate in the Baltimore Metropolitan Area

1227 Bush St. Baltimore, MD 21230

Location Map



Jim Chivers / Will McCullough
Gold And Company, LLC
5601 Newbury St.
Baltimore, MD 21209

410.578.1300 (Office)

www.goldcommercial.net