



GOLD AND COMPANY, LLC

WWW.GOLDCOMMERCIAL.NET

Commercial Real Estate in the Baltimore Metropolitan Area



111 S. Kresson St. Baltimore, MD 21224

Gold And Company, LLC

Jim Chivers
443.928.7522 cell
jim@goldcommercial.net

Will McCullough
410.292.2985 cell
will@goldcommercial.net

John Roe
410.960.9554 cell
john@goldcommercial.net

www.goldcommercial.net

- **Investment Offering: Fully Leased Industrial Property**
- **Available FOR SALE**
- **+/- 9,300 sf Building**
- **NNN Lease—No Landlord Obligations**
- **Tenant: Baltimore City Dept. of Public Works**
- **Drive-In Warehouse**
- **I-2 Zoning—Heavy Industrial**
- **Located in a Qualified Enterprise, HUB, and Opp. Zone**
- **Close to Dundalk Marine Port**
- **Call for Financials**

This property offering is subject to change without notice. All information is deemed reliable but not guaranteed.



Gold And Company

Commercial Real Estate in the Baltimore Metropolitan Area

111 S. Kresson St. Baltimore, MD 21224

Additional Pictures



Jim Chivers / Will McCullough / John Roe
Gold And Company, LLC
5601 Newbury St.
Baltimore, MD 21209

410.578.1300 (Office)

www.goldcommercial.net

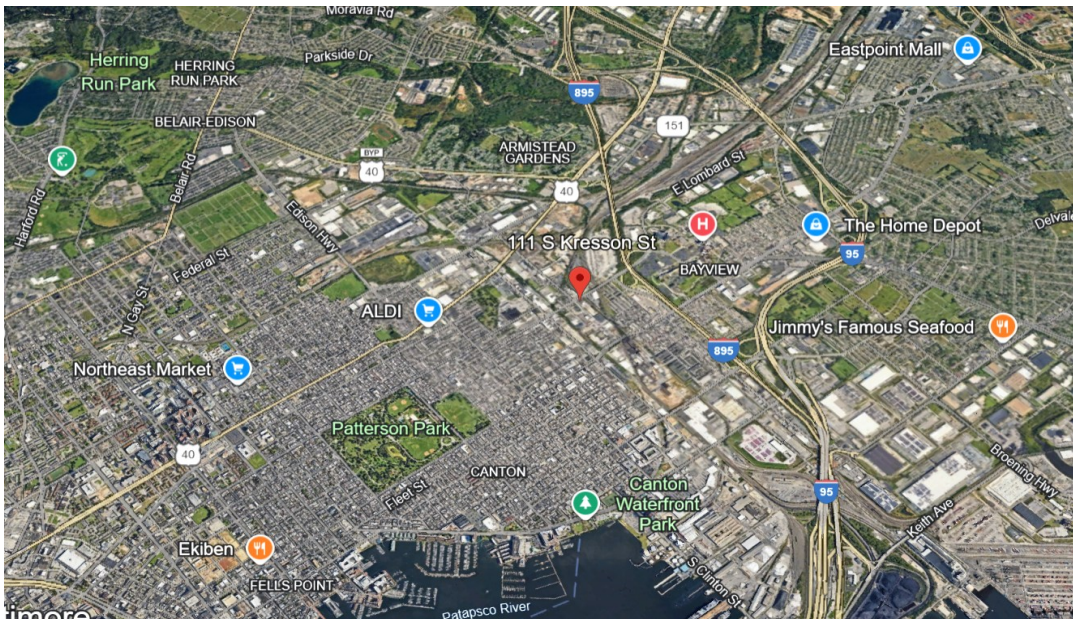
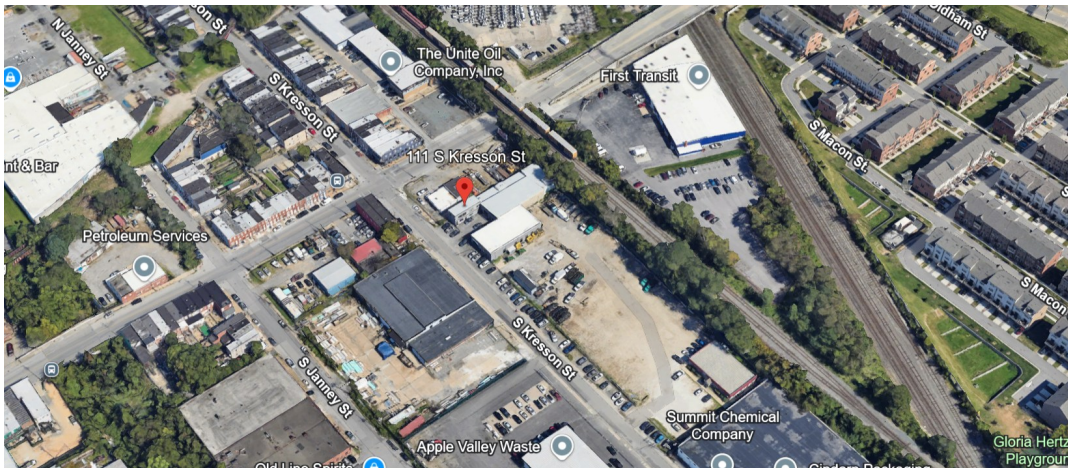


Gold And Company

Commercial Real Estate in the Baltimore Metropolitan Area

111 S. Kresson St. Baltimore, MD 21224

Map



Jim Chivers / Will McCullough / John Roe
Gold And Company, LLC
5601 Newbury St.
Baltimore, MD 21209

410.578.1300 (Office)

www.goldcommercial.net

