



GOLD AND COMPANY, LLC

WWW.GOLDCOMMERCIAL.NET

Commercial Real Estate in the Baltimore Metropolitan Area



8601 Lasalle Road, Towson, MD 21286

Gold And Company, LLC

**5601 Newbury St.
Baltimore, MD 21209**

For More Information:

**Will McCullough, SIOR
Vice President
410.292.2985 cell
will@goldcommercial.net**

**Jim Chivers
Sr. Vice President
443.928.7522 cell
jim@goldcommercial.net**

www.goldcommercial.net

- **1,806 sf Medical/Office FOR LEASE/SALE**
- **Recent Build-out with Ample Glass Line**
- **Part of Mixed-use Medical Building**
- **Ample 4.5 Per 1,000 Parking Ratio**
- **Convenient access to I-695, York Rd & I-83**
- **Proximity to Wide Range of Towson Amenities**
- **Professional Baltimore County Location**
- **Contact For More Information**

This property offering is subject to change without notice. All information is deemed reliable but not guaranteed.

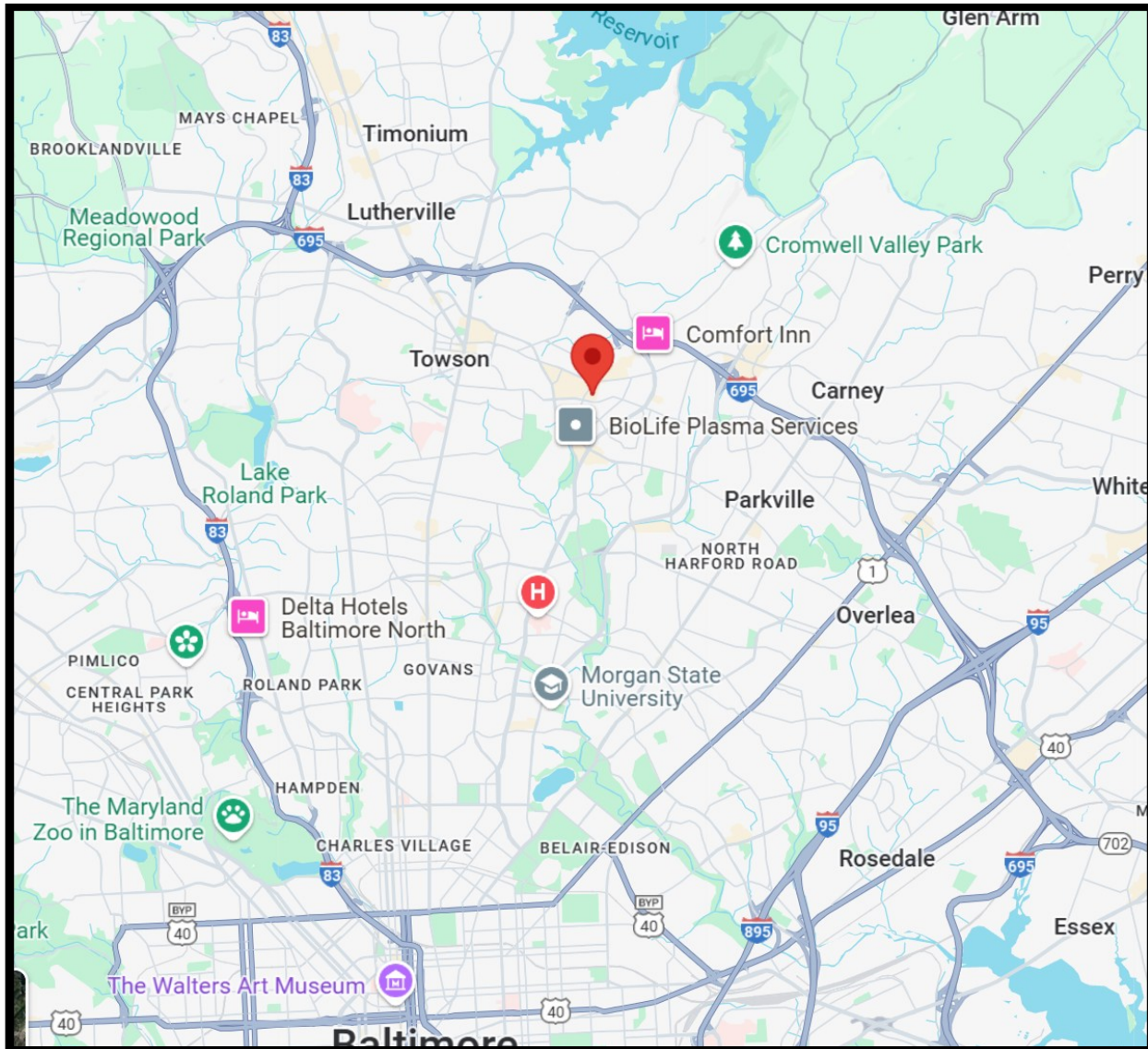


Gold And Company

Commercial Real Estate in the Baltimore Metropolitan Area

8601 Lasalle Road, Towson, MD 21286

Location Map



Will McCullough/Jim Chivers
Gold And Company, LLC
5601 Newbury St.
Baltimore, MD 21209

410.578.1300 (Office)

www.goldcommercial.net

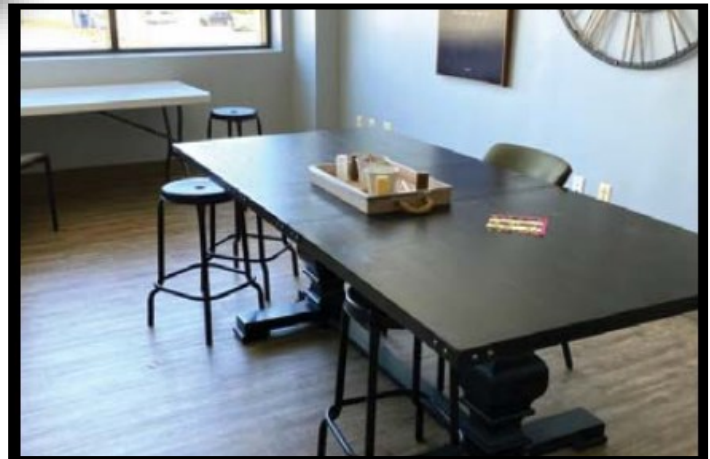


Gold And Company

Commercial Real Estate in the Baltimore Metropolitan Area

8601 Lasalle Road, Towson, MD 21286

Interior Photos



**Will McCullough/Jim Chivers
Gold And Company, LLC
5601 Newbury St.
Baltimore, MD 21209**

410.578.1300 (Office)

www.goldcommercial.net

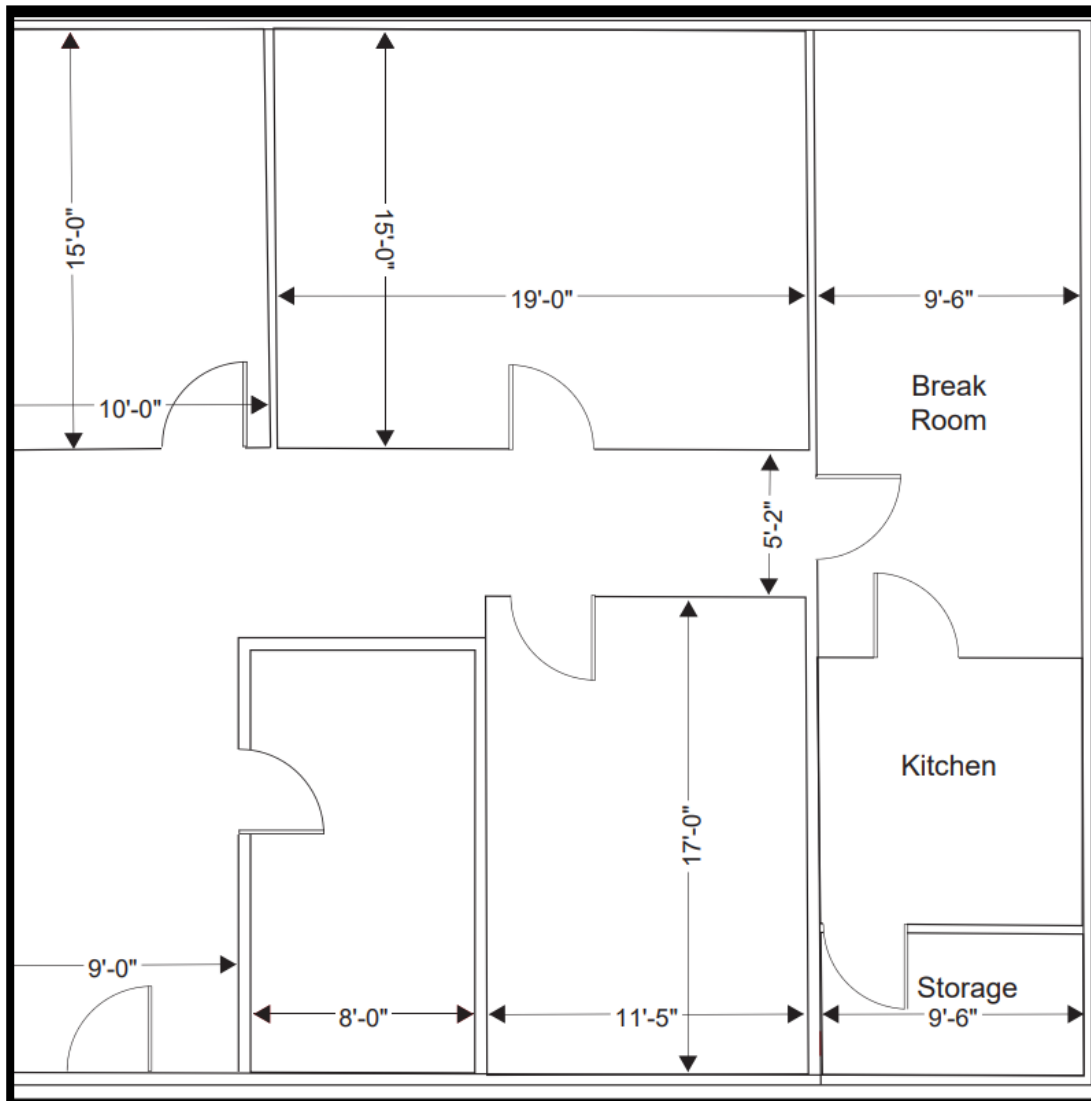


Gold And Company

Commercial Real Estate in the Baltimore Metropolitan Area

8601 Lasalle Road, Towson, MD 21286

Floor Plan



Will McCullough/Jim Chivers
Gold And Company, LLC
5601 Newbury St.
Baltimore, MD 21209

410.578.1300 (Office)

www.goldcommercial.net