



GOLD AND COMPANY, LLC

WWW.GOLDCOMMERCIAL.NET

Commercial Real Estate in the Baltimore Metropolitan Area



6411 Beckley St. Baltimore, MD 21224

Gold And Company, LLC

For More Information:

Jim Chivers
443.928.7522 cell
jim@goldcommercial.net

Will McCullough
410.292.2985
will@goldcommercial.net

John Roe
410.960.9554 cell
john@goldcommercial.net

www.goldcommercial.net

- **R&D / Lab / Office Building FOR SALE / LEASE**
- **+/- 77,250 Sf Total Building**
- **Three Stories**
- **Attractive Lab and Office Buildout**
- **Partially Leased—+/- 25% Occupied**
- **Elevator Served**
- **Located in the Holabird Industrial Park—Excellent Access to I-95 / I-895 / I-695**
- **Situated in an Opportunity Zone – I-2 Zoning**
- **Fenced In Parking Area—+/- 170+ Parking Spaces**
- **4.56 Acres**
- **Call For More Information**

This property offering is subject to change without notice. All information is deemed reliable but not guaranteed.

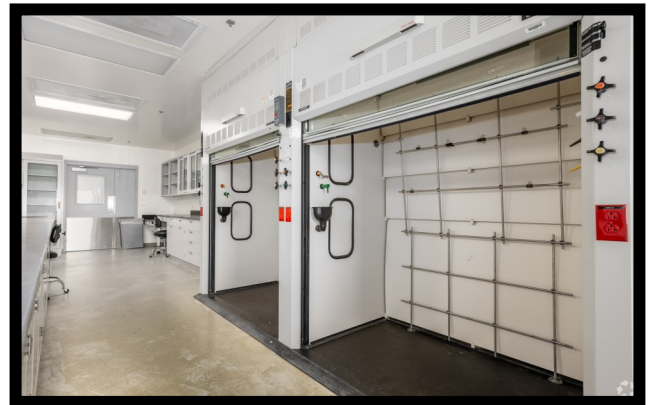
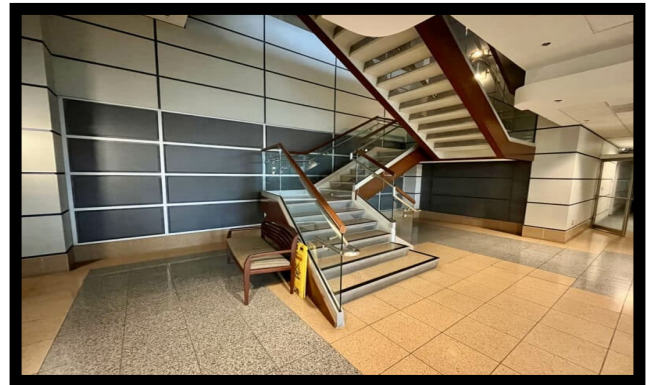


Gold And Company

Commercial Real Estate in the Baltimore Metropolitan Area

6411 Beckley St. Baltimore, MD 21224

Interior Photos





Gold And Company

Commercial Real Estate in the Baltimore Metropolitan Area

6411 Beckley St. Baltimore, MD 21224

Aerials



Jim Chivers / Will McCullough / John Roe
Gold And Company, LLC
5601 Newbury St.
Baltimore, MD 21209

410.578.1300 (Office)

www.goldcommercial.net

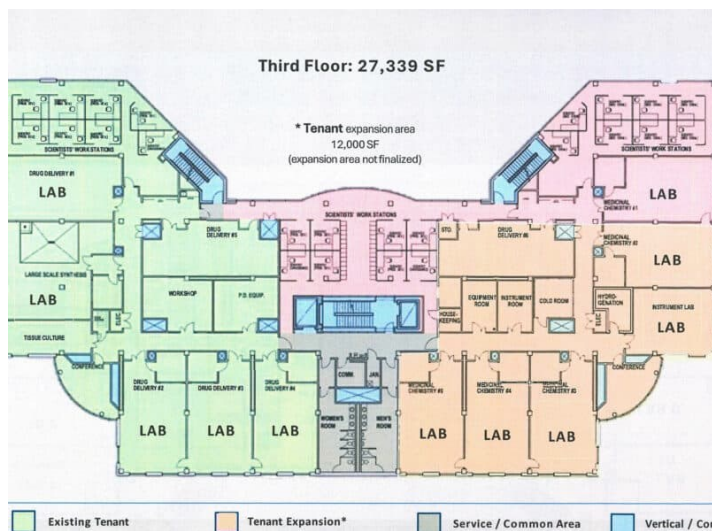
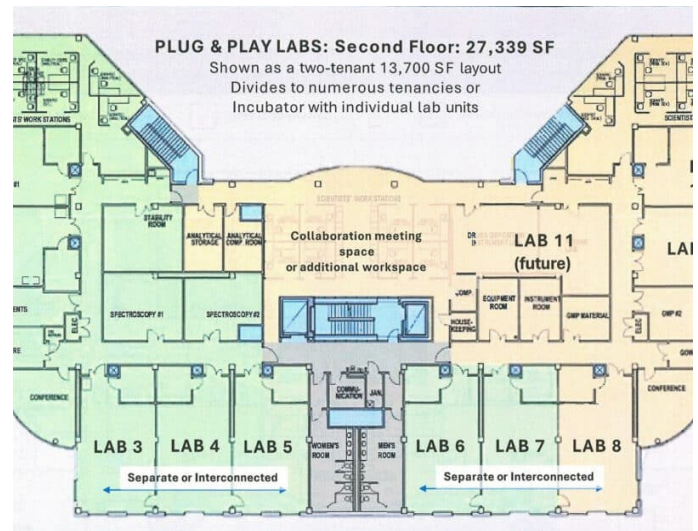
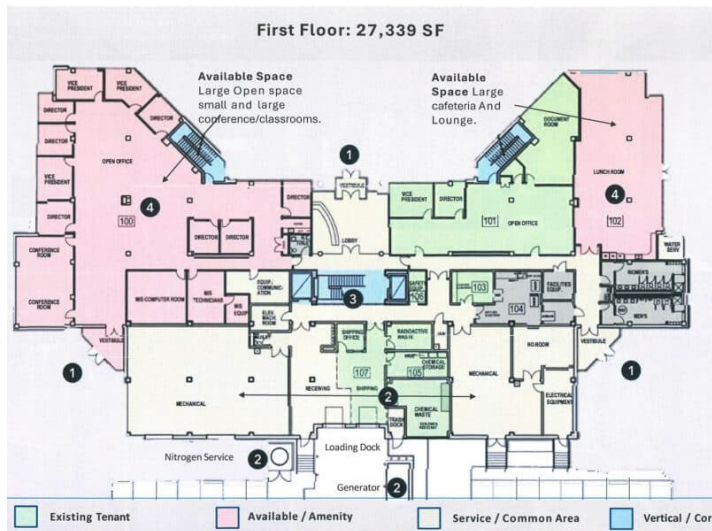


Gold And Company

Commercial Real Estate in the Baltimore Metropolitan Area

6411 Beckley St. Baltimore, MD 21224

Building Layout



Jim Chivers / Will McCullough / John Roe
Gold And Company, LLC
5601 Newbury St.
Baltimore, MD 21209

410.578.1300 (Office)

www.goldcommercial.net

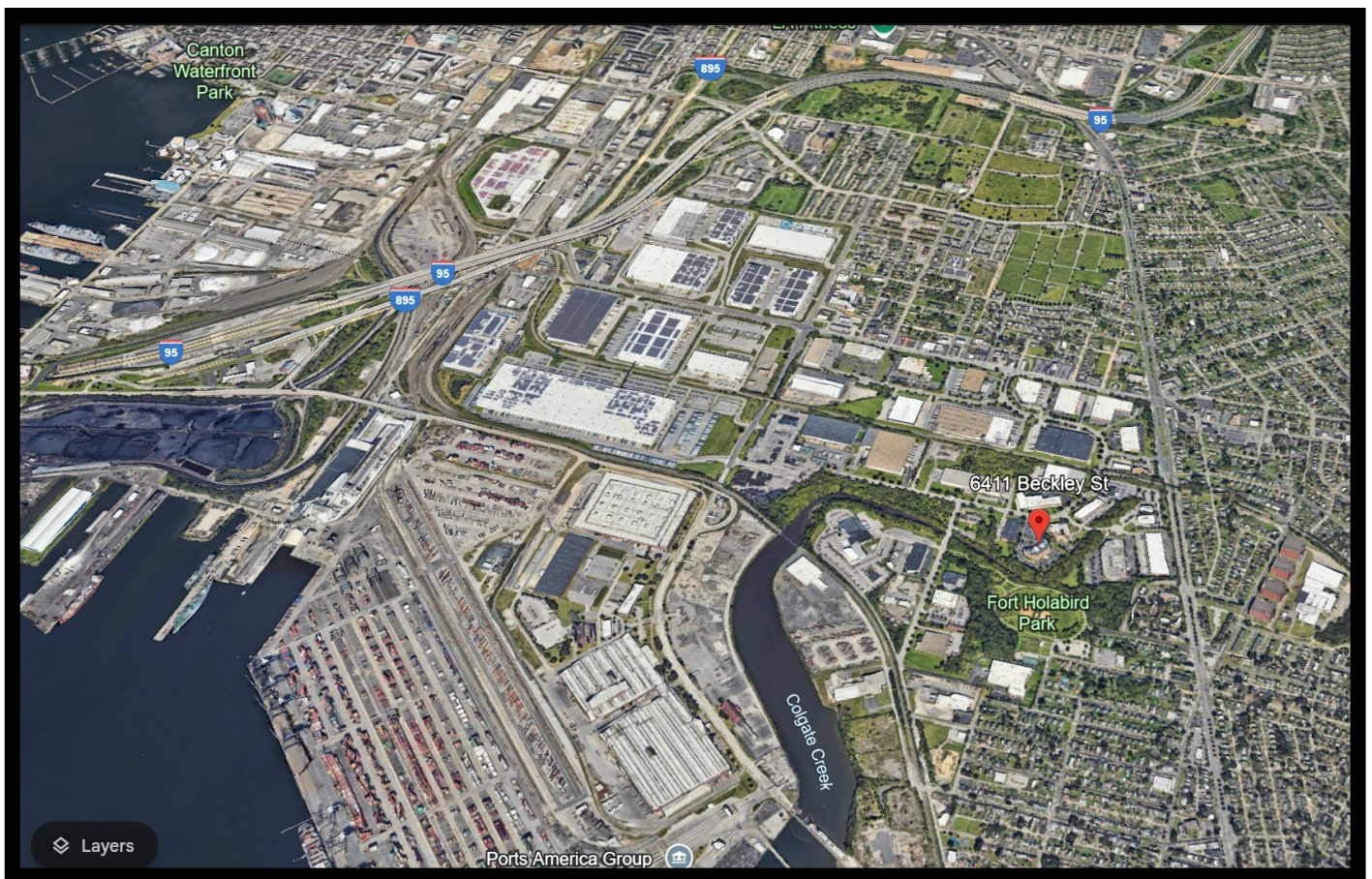


Gold And Company

Commercial Real Estate in the Baltimore Metropolitan Area

6411 Beckley St. Baltimore, MD 21224

Map



Jim Chivers / Will McCullough / John Roe
Gold And Company, LLC
5601 Newbury St.
Baltimore, MD 21209

410.578.1300 (Office)

www.goldcommercial.net