



GOLD AND COMPANY, LLC

WWW.GOLDCOMMERCIAL.NET

Commercial Real Estate in the Baltimore Metropolitan Area



819 N Charles Street, Baltimore, MD 21201

Gold And Company, LLC

**5601 Newbury St.
Baltimore, MD 21209**

For More Information:

**Jim Chivers
Sr. Vice President
443.928.7522 cell
jim@goldcommercial.net**

**Will McCullough, SIOR
Vice President
410.292.2985 cell
will@goldcommercial.net**

www.goldcommercial.net

- **6,000 Multi-Story Mixed-use AVAILABLE**
- **Mt. Vernon location near Walters Art Museum**
- **Historic Architecture with Modern Systems**
- **Prominent Entrance with Ample Glass**
- **Zoned C-2 (Commercial)**
- **On-Site Dedicated Parking Spaces**
- **Ideal for Retail, Entertainment, Non-Profit**
- **Proximity to Downtown Baltimore and I-95**
- **Contact For More Information**

This property offering is subject to change without notice. All information is deemed reliable but not guaranteed.

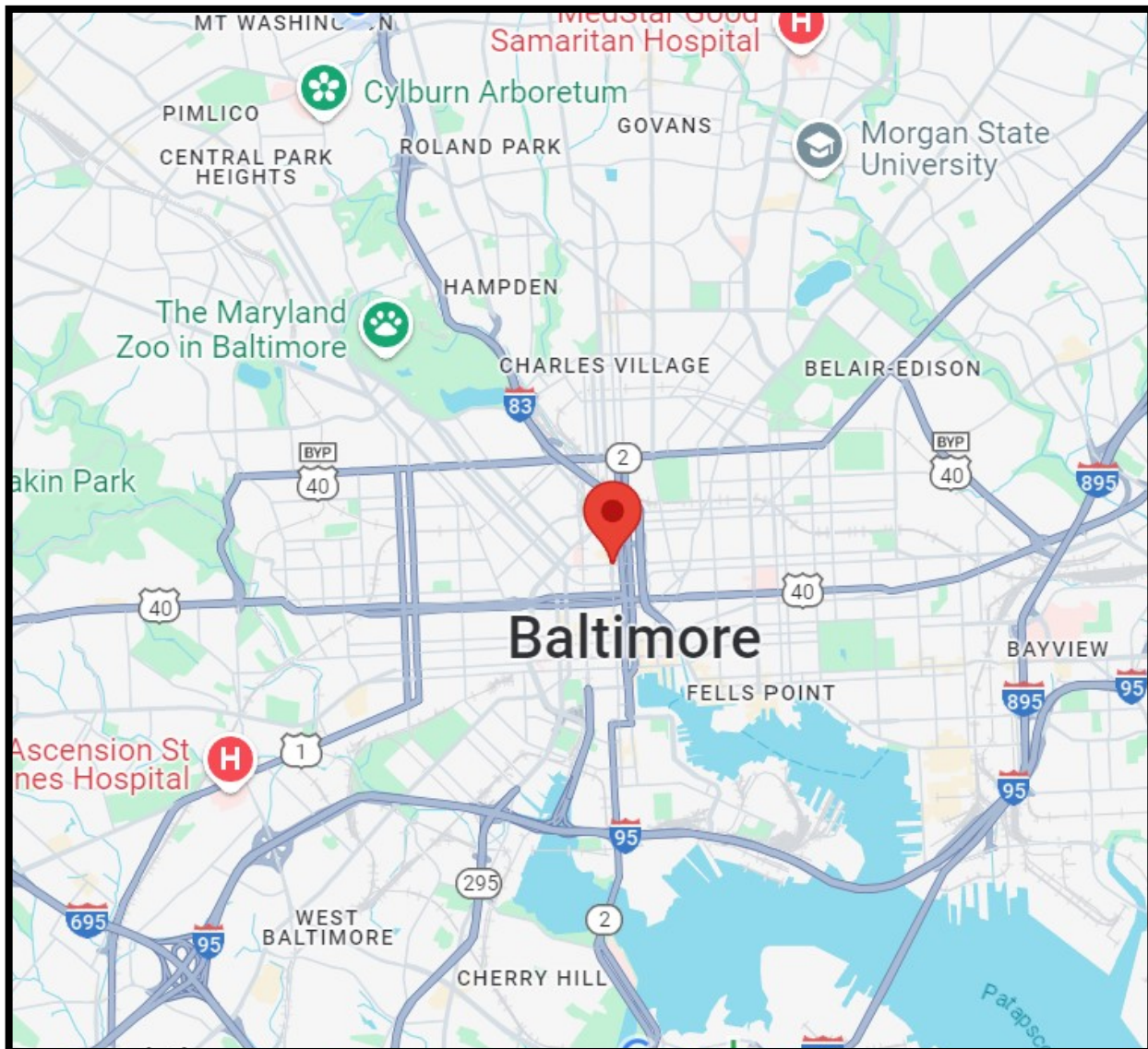


Gold And Company

Commercial Real Estate in the Baltimore Metropolitan Area

819 N Charles Street, Baltimore, MD 21201

Location Map



Jim Chivers / Will McCullough
Gold And Company, LLC
5601 Newbury St.
Baltimore, MD 21209

410.578.1300 (Office)

www.goldcommercial.net



Gold And Company

Commercial Real Estate in the Baltimore Metropolitan Area

819 N Charles Street, Baltimore, MD 21201

Birdseye Aerial



Jim Chivers / Will McCullough
Gold And Company, LLC
5601 Newbury St.
Baltimore, MD 21209

410.578.1300 (Office)

www.goldcommercial.net



Gold And Company

Commercial Real Estate in the Baltimore Metropolitan Area

819 N Charles Street, Baltimore, MD 21201

Additional Photos



Jim Chivers / Will McCullough
Gold And Company, LLC
5601 Newbury St.
Baltimore, MD 21209

410.578.1300 (Office)

www.goldcommercial.net

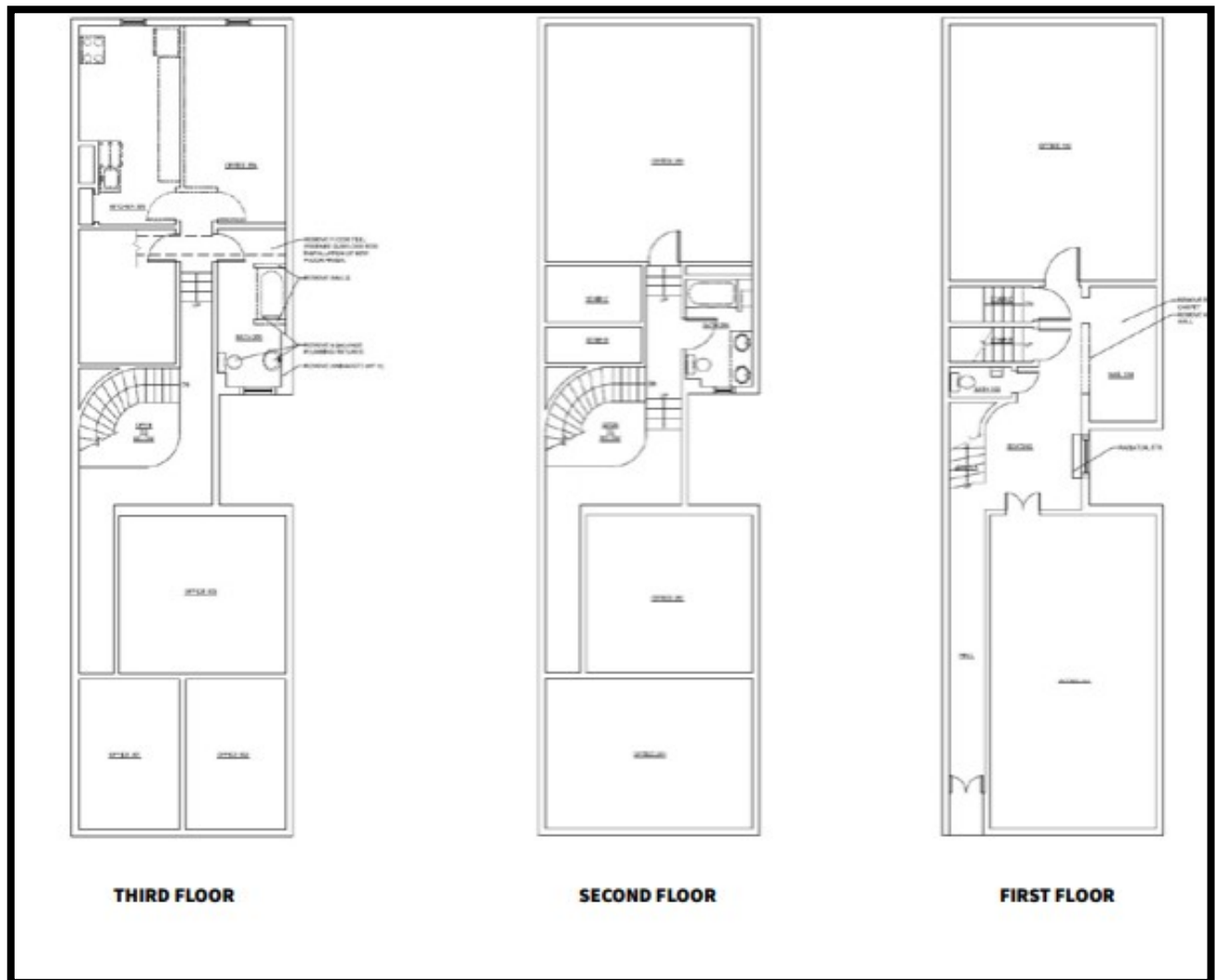


Gold And Company

Commercial Real Estate in the Baltimore Metropolitan Area

819 N Charles Street, Baltimore, MD 21201

Existing Floor Plans



Jim Chivers / Will McCullough
Gold And Company, LLC
5601 Newbury St.
Baltimore, MD 21209

410.578.1300 (Office)

www.goldcommercial.net

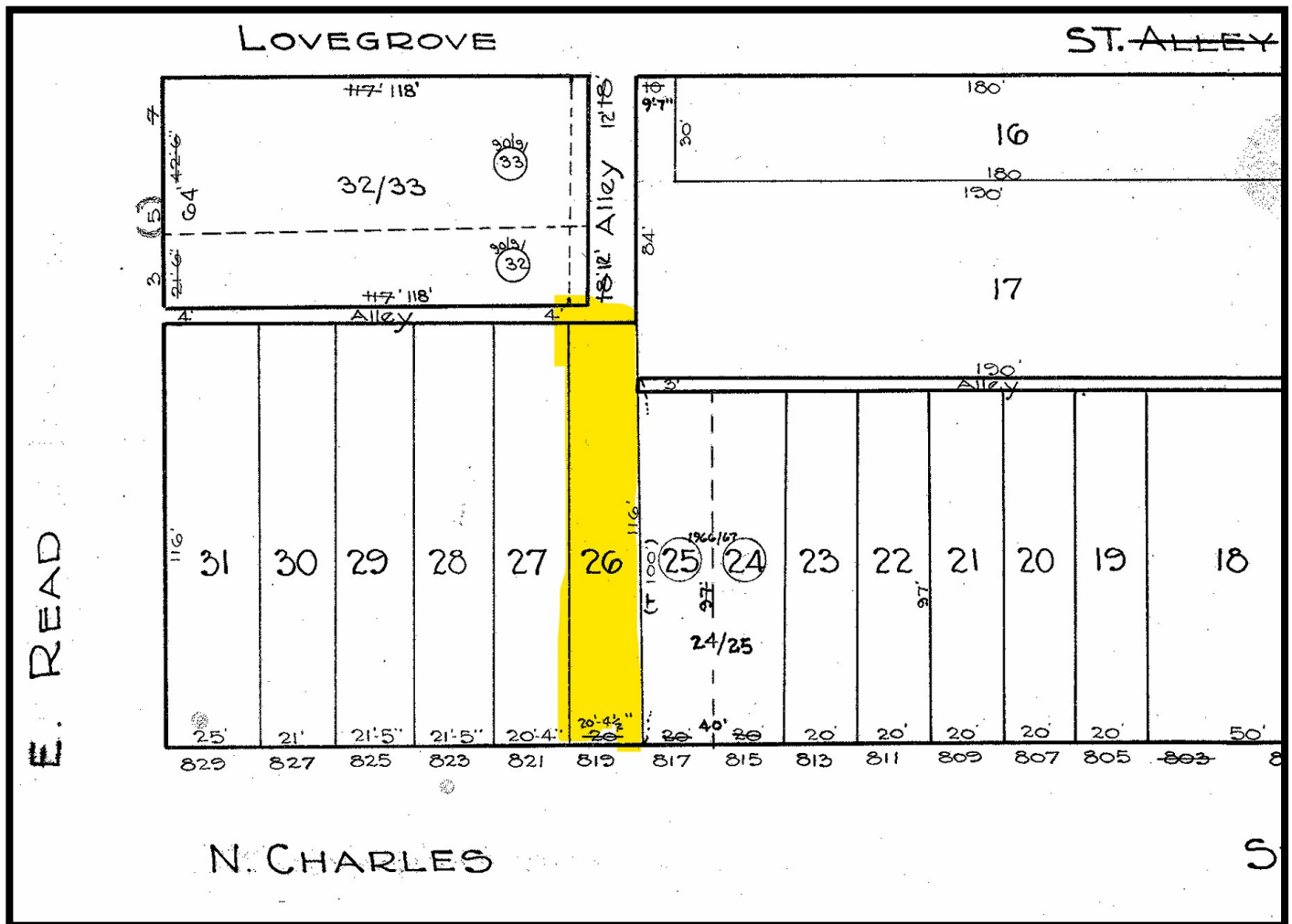


Gold And Company

Commercial Real Estate in the Baltimore Metropolitan Area

327 N Eutaw Street, Baltimore, MD 21201

Plat Map



Jim Chivers / Will McCullough
Gold And Company, LLC
5601 Newbury St.
Baltimore, MD 21209

410.578.1300 (Office)

www.goldcommercial.net