



GOLD AND COMPANY, LLC

WWW.GOLDCOMMERCIAL.NET

Commercial Real Estate in the Baltimore Metropolitan Area



2001 Windsor Ave., Baltimore, MD 21217

For More Information:

Jim Chivers
Sr. Vice President
443.928.7522 cell
jim@goldcommercial.net

Will McCullough, SIOR
Vice President
410.292.2985 cell
will@goldcommercial.net

Alex Simone
Vice President
443.845.4413
alex@goldcommercial.net

www.goldcommercial.net

- **Industrial Building FOR SALE / LEASE**
- **+/- 40,500 sf Total Building**
- **1.62 Acres**
- **I-MU Zoning - Industrial—Mixed Use**
- **Baltimore City**
- **Paved Yard**
- **Drive-In Access and Dock Loading**
- **Includes Private Renovated Offices and Conference Rooms**
- **Easily Accessible to Balto. City Main Thoroughfares**
- **Call For More Information**

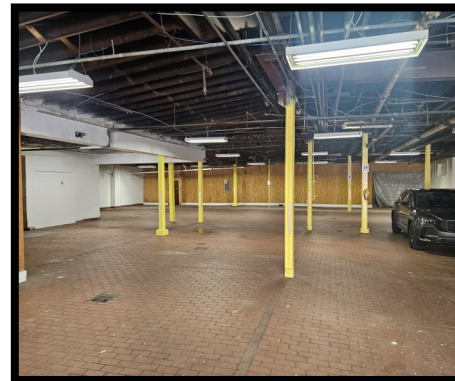
This property offering is subject to change without notice. All information is deemed reliable but not guaranteed.



Gold And Company

Commercial Real Estate in the Baltimore Metropolitan Area

Additional Pictures



Jim Chivers / Will McCullough / Alex Simone 410.578.1300 (Office)

Gold And Company, LLC

5601 Newbury St.

Baltimore, MD 21209

www.goldcommercial.net

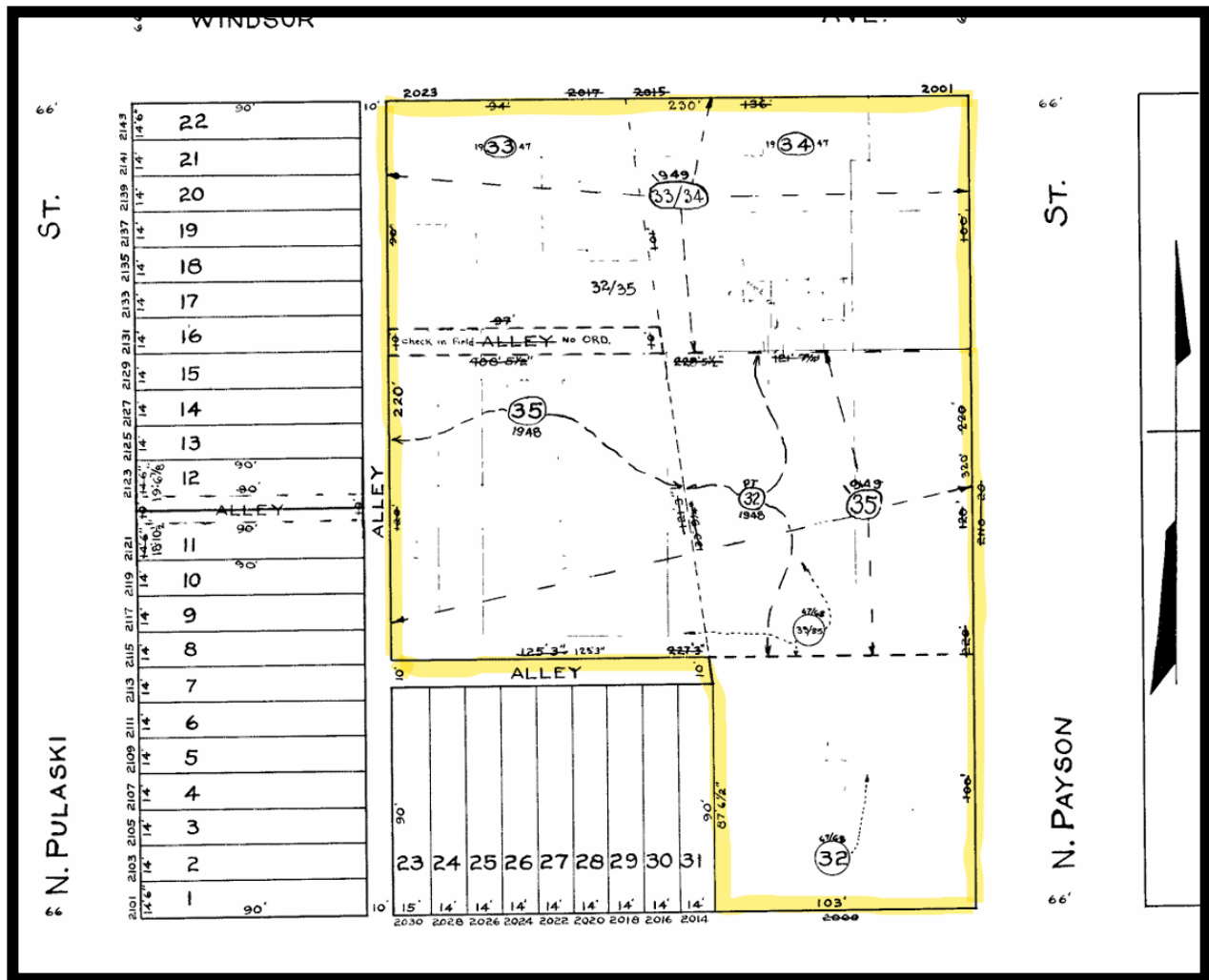


Gold And Company

Commercial Real Estate in the Baltimore Metropolitan Area

2001 Windsor Ave., Baltimore, MD 21217

Block Map



Jim Chivers / Will McCullough / Alex Simone 410.578.1300 (Office)

Gold And Company, LLC

5601 Newbury St.

Baltimore, MD 21209

www.goldcommercial.net

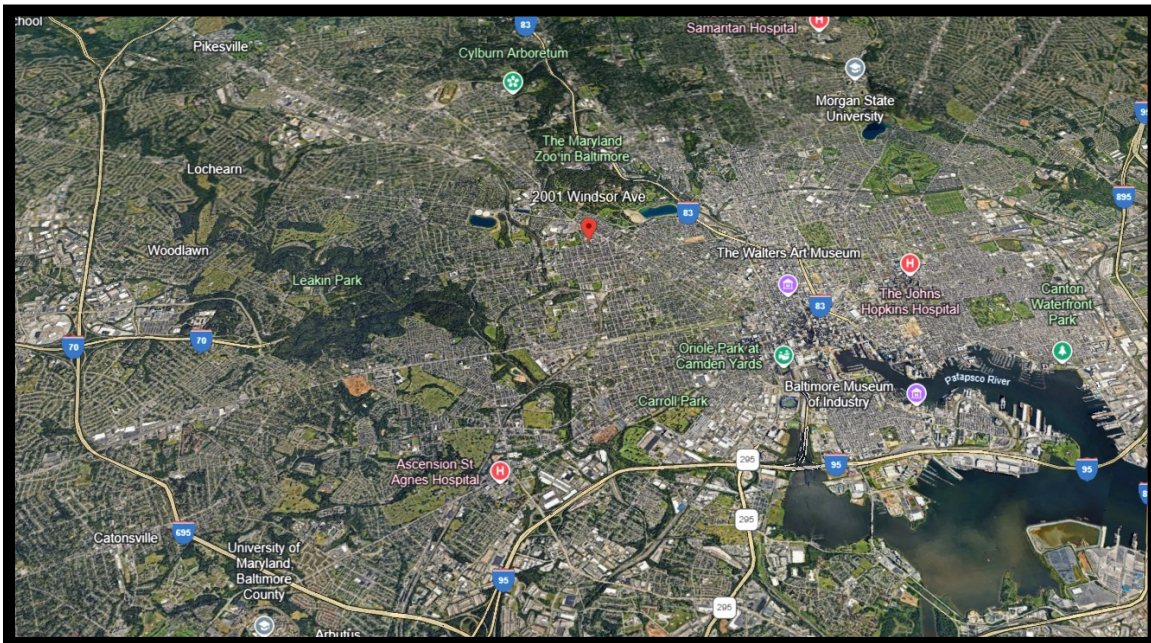
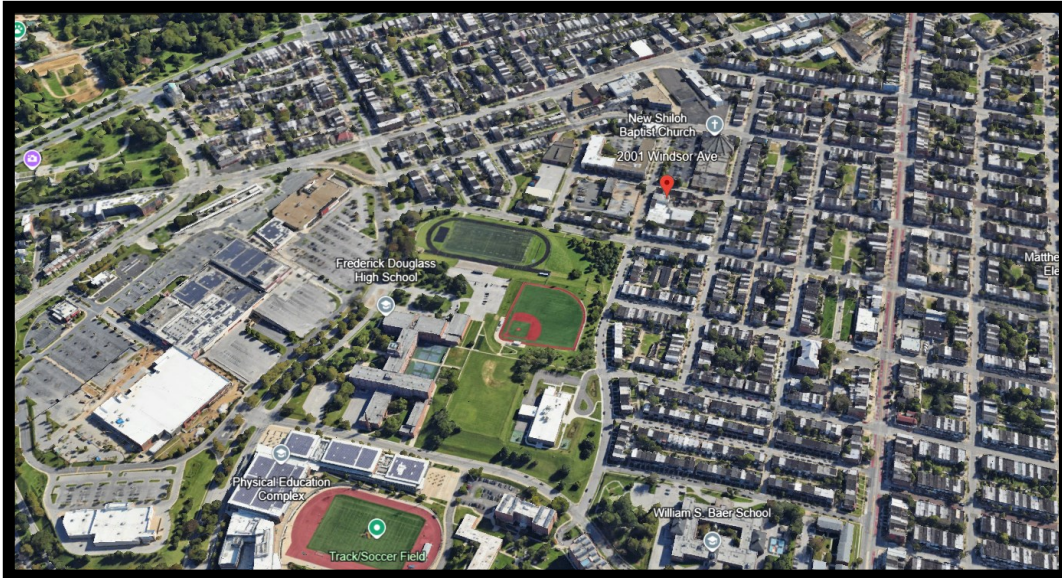


Gold And Company

Commercial Real Estate in the Baltimore Metropolitan Area

2001 Windsor Ave., Baltimore, MD 21217

Aerial and Map



Jim Chivers / Will McCullough / Alex Simone
Gold And Company, LLC
5601 Newbury St.
Baltimore, MD 21209

410.578.1300 (Office)

www.goldcommercial.net