



# GOLD AND COMPANY, LLC

[WWW.GOLDCOMMERCIAL.NET](http://WWW.GOLDCOMMERCIAL.NET)

*Commercial Real Estate in the Baltimore Metropolitan Area*



## **1710 Delvale Ave. Dundalk, MD 21222**

### **For More Information:**

**Jim Chivers**  
Sr. Vice President  
443.928.7522 cell  
[jim@goldcommercial.net](mailto:jim@goldcommercial.net)

**Will McCullough, SIOR**  
Vice President  
410.292.2985 cell  
[will@goldcommercial.net](mailto:will@goldcommercial.net)

**John Roe**  
Vice President  
410.960.9554  
[john@goldcommercial.net](mailto:john@goldcommercial.net)

[www.goldcommercial.net](http://www.goldcommercial.net)

- **Church Facility / Faith Based Community Center FOR SALE**
- **+/- 15,000 sf Total Building**
- **3.4 Total Acres**
- **Completely Renovated in 2020**
- **+/- 100 Parking Spaces w/ Room to Expand**
- **Spacious Sanctuary with Open Floor Plan**
- **Adjacent Event Venue, School, Hall, Training Center, etc...**
- **Includes Several Private Offices**
- **Easily Accessible to Primary Interstates and Thoroughfares**
- **Call For More Information**

This property offering is subject to change without notice. All information is deemed reliable but not guaranteed.

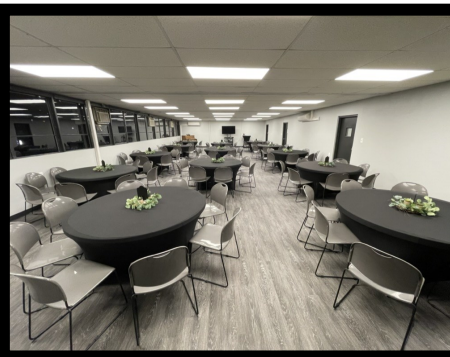
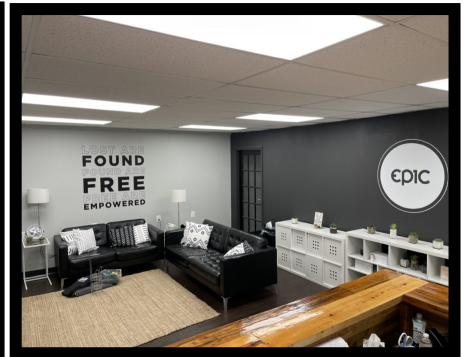
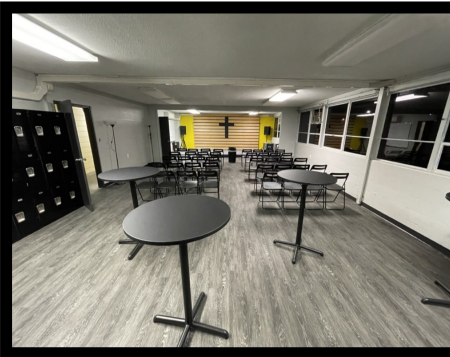




# **Gold And Company**

**Commercial Real Estate in the Baltimore Metropolitan Area**

## **Additional Pictures**



**Jim Chivers / Will McCullough / John Roe**  
**Gold And Company, LLC**  
**5601 Newbury St.**  
**Baltimore, MD 21209**

**410.578.1300 (Office)**

**[www.goldcommercial.net](http://www.goldcommercial.net)**

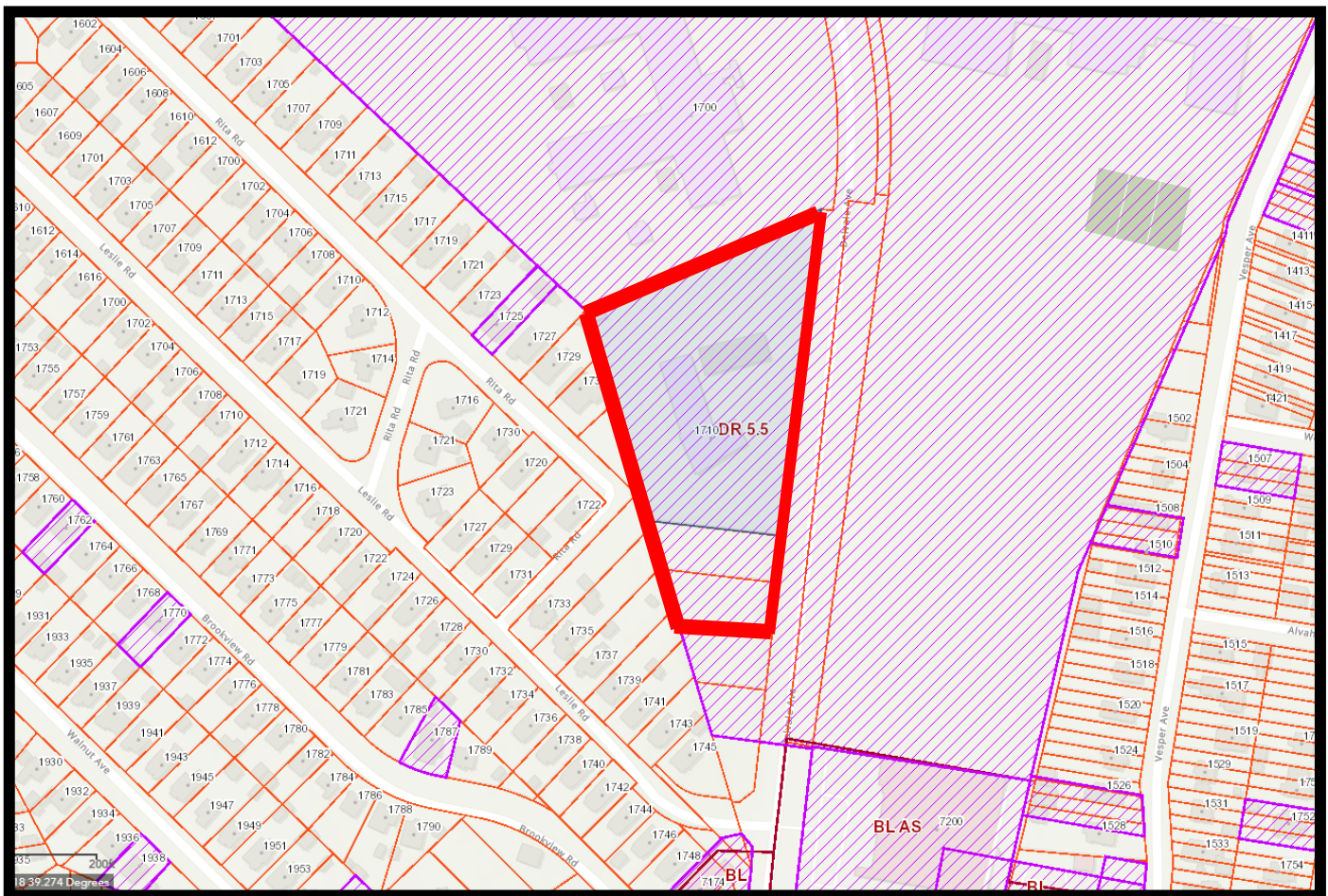


# **Gold And Company**

**Commercial Real Estate in the Baltimore Metropolitan Area**

**1710 Delvale Ave. Dundalk, MD 21222**

## **Block Map**



**Jim Chivers / Will McCullough / John Roe**  
**Gold And Company, LLC**  
**5601 Newbury St.**  
**Baltimore, MD 21209**

**410.578.1300 (Office)**

**[www.goldcommercial.net](http://www.goldcommercial.net)**



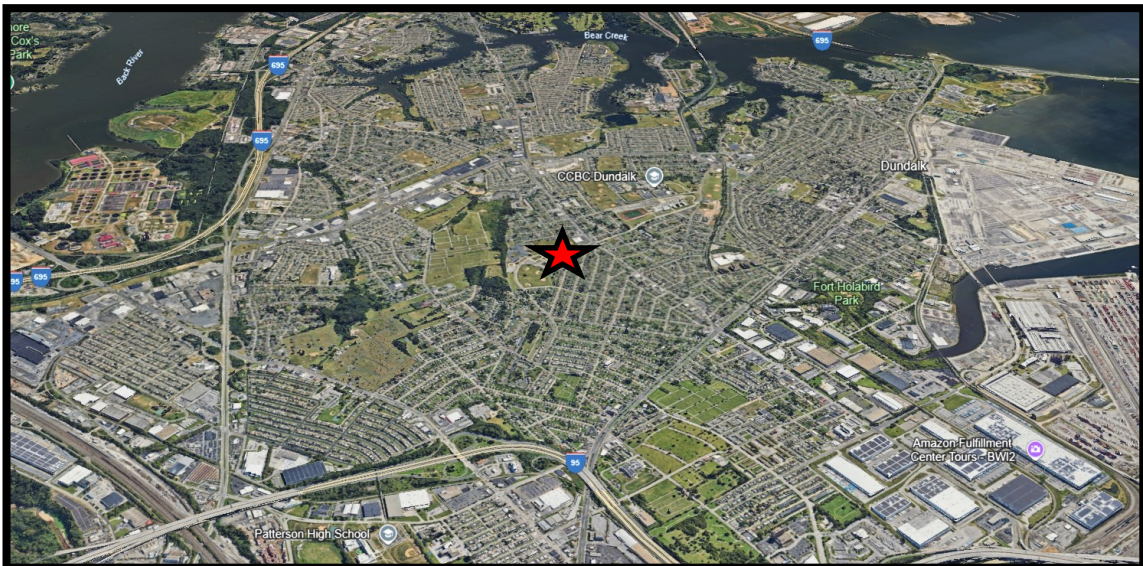


# **Gold And Company**

**Commercial Real Estate in the Baltimore Metropolitan Area**

**1710 Delvale Ave. Dundalk, MD 21222**

## **Aerial and Map**



**Jim Chivers / Will McCullough / John Roe**  
**Gold And Company, LLC**  
**5601 Newbury St.**  
**Baltimore, MD 21209**

**410.578.1300 (Office)**

**[www.goldcommercial.net](http://www.goldcommercial.net)**