



# GOLD AND COMPANY, LLC

[WWW.GOLDCOMMERCIAL.NET](http://WWW.GOLDCOMMERCIAL.NET)

*Commercial Real Estate in the Baltimore Metropolitan Area*

*Architectural Renderings*



**950 N Lehigh Street, Baltimore, MD 21205**

## Gold And Company, LLC

5601 Newbury St.  
Baltimore, MD 21209

**For More Information:**

Jim Chivers  
443.928.7522 cell  
jim@goldcommercial.net

Will McCullough, SIOR, CCIM  
410.292.2985 cell  
will@goldcommercial.net

[www.goldcommercial.net](http://www.goldcommercial.net)

- **16,080 Warehouse- New Tilt-Wall Construction**
- **24' Clear Height**
- **Features Dock and Drive-in Loading**
- **Zoned I-2 (Heavy Industrial)**
- **Proximity to I-95, I-895 & Ports of Baltimore**
- **Enterprise, Hub & Opportunity Zone**
- **3rd Quarter 2025 shell delivery**
- **Office Per Tenant's specifications**
- **Contact For More Information**

This property offering is subject to change without notice. All information is deemed reliable but not guaranteed.

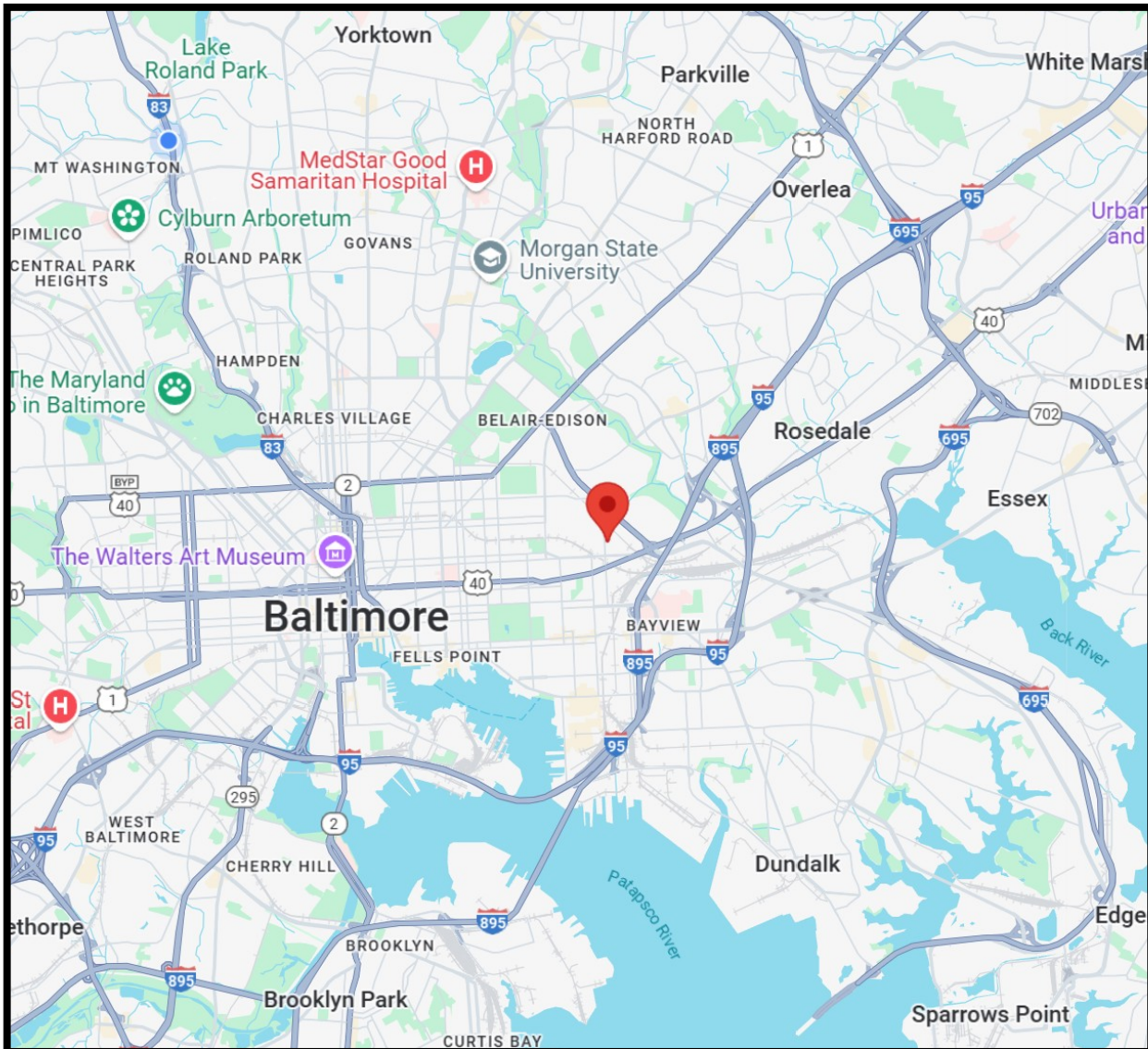


# **Gold And Company**

**Commercial Real Estate in the Baltimore Metropolitan Area**

**950 N Lehigh Street, Baltimore, MD 21205**

## **Location Map**



**Jim Chivers / Will McCullough**  
**Gold And Company, LLC**  
**5601 Newbury St.**  
**Baltimore, MD 21209**

**410.578.1300 (Office)**

**[www.goldcommercial.net](http://www.goldcommercial.net)**

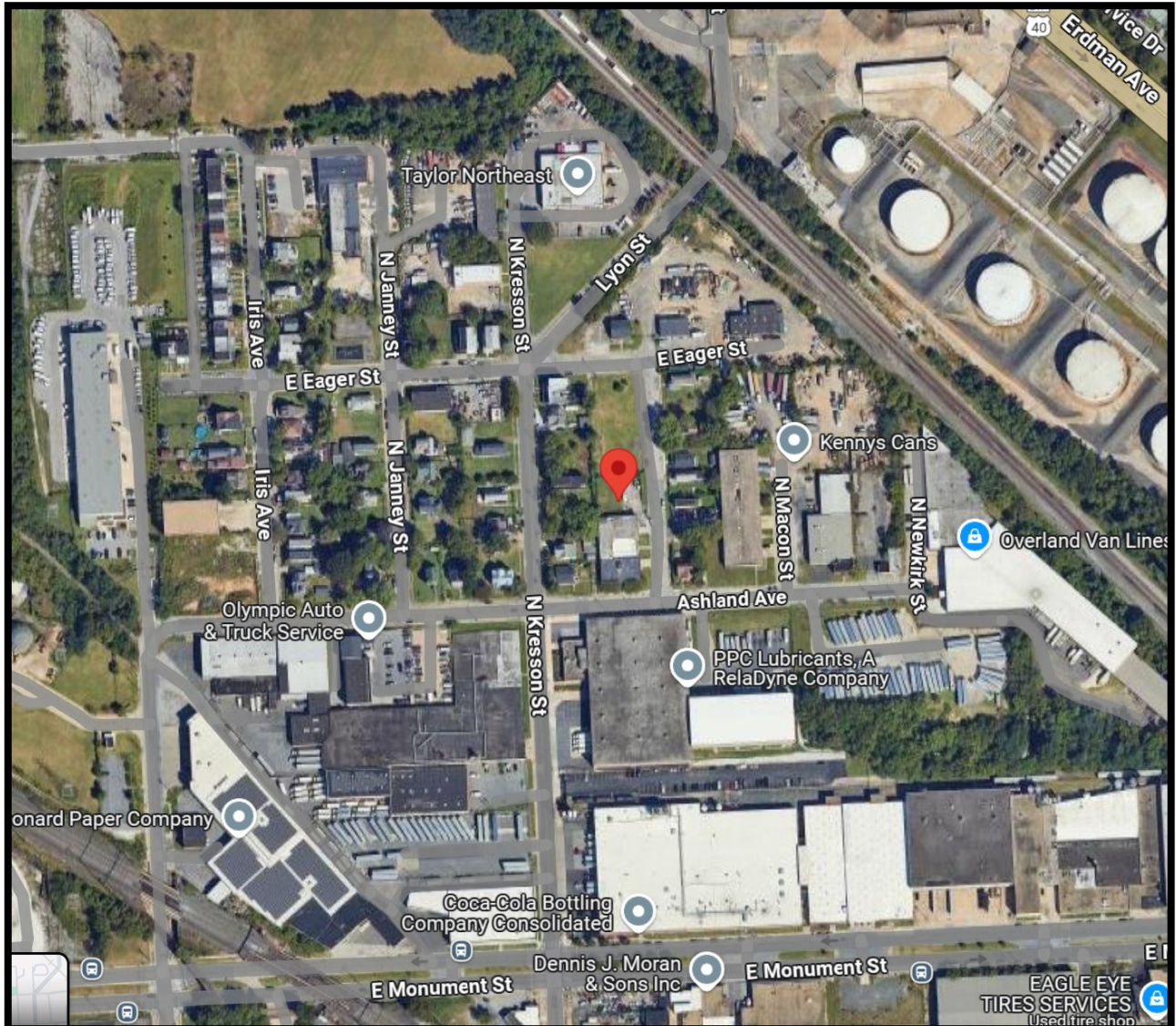


# **Gold And Company**

**Commercial Real Estate in the Baltimore Metropolitan Area**

**950 N Lehigh Street, Baltimore, MD 21205**

## **Birdseye Aerial**



**Jim Chivers / Will McCullough**  
**Gold And Company, LLC**  
**5601 Newbury St.**  
**Baltimore, MD 21209**

**410.578.1300 (Office)**

**[www.goldcommercial.net](http://www.goldcommercial.net)**

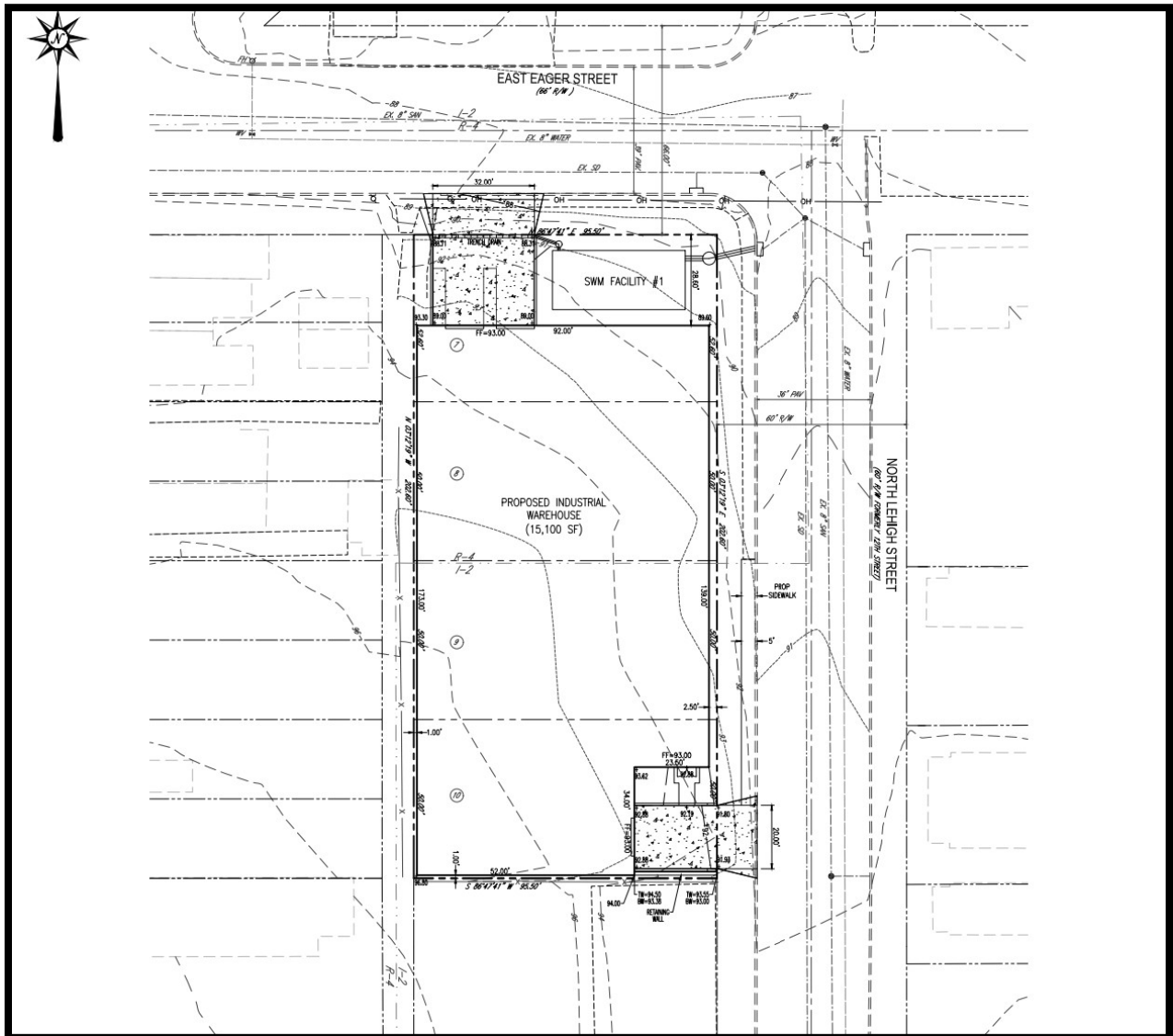


# Gold And Company

Commercial Real Estate in the Baltimore Metropolitan Area

**950 N Lehigh Street, Baltimore, MD 21205**

## Site Plan



**Jim Chivers / Will McCullough**  
**Gold And Company, LLC**  
**5601 Newbury St.**  
**Baltimore, MD 21209**

**410.578.1300 (Office)**

**[www.goldcommercial.net](http://www.goldcommercial.net)**