



# GOLD AND COMPANY, LLC

[WWW.GOLDCOMMERCIAL.NET](http://WWW.GOLDCOMMERCIAL.NET)

*Commercial Real Estate in the Baltimore Metropolitan Area*



## **3420 Ash St. Baltimore, MD 21211**

**For More Information:**

**Jim Chivers**  
Sr. Vice President  
443.928.7522 cell  
jim@goldcommercial.net

**Will McCullough, SIOR**  
Vice President  
410.292.2985 cell  
will@goldcommercial.net

**Alex Simone**  
Vice President  
443.845.4413 cell  
alex@goldcommercial.net

**[www.goldcommercial.net](http://www.goldcommercial.net)**

- **Contractors Building Available FOR SALE**
- **Located in the Clipper Mill area**
- **+/- 4,000 sf Building**
- **Included Warehouse and Attached Structures**
- **I-1 Zoning**
- **Visibility from I-83**
- **Gas Heat in Warehouse**
- **Excellent Exposure**
- **Call For More Information**

This property offering is subject to change without notice. All information is deemed reliable but not guaranteed.

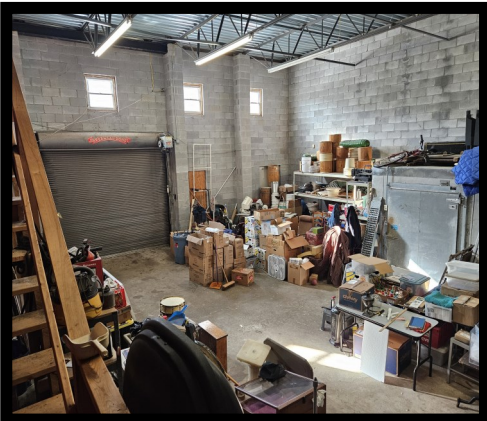
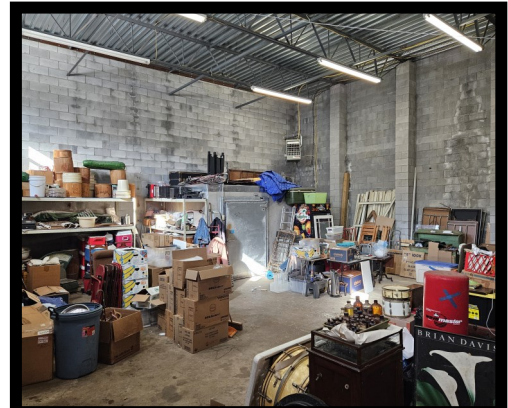
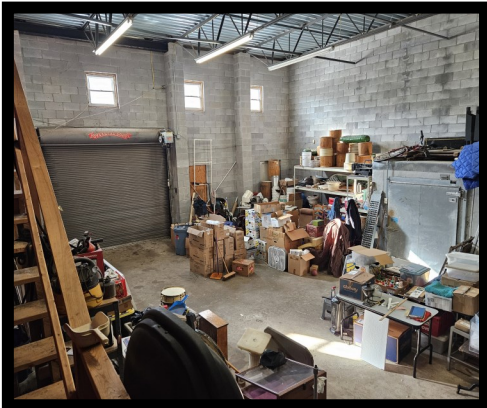


# **Gold And Company**

**Commercial Real Estate in the Baltimore Metropolitan Area**

**3420 Ash St. Baltimore, MD 21211**

## **Additional Pictures**



**Jim Chivers / Will McCullough / Alex Simone**  
**Gold And Company, LLC**  
**5601 Newbury St.**  
**Baltimore, MD 21209**

**410.578.1300 (Office)**

**[www.goldcommercial.net](http://www.goldcommercial.net)**

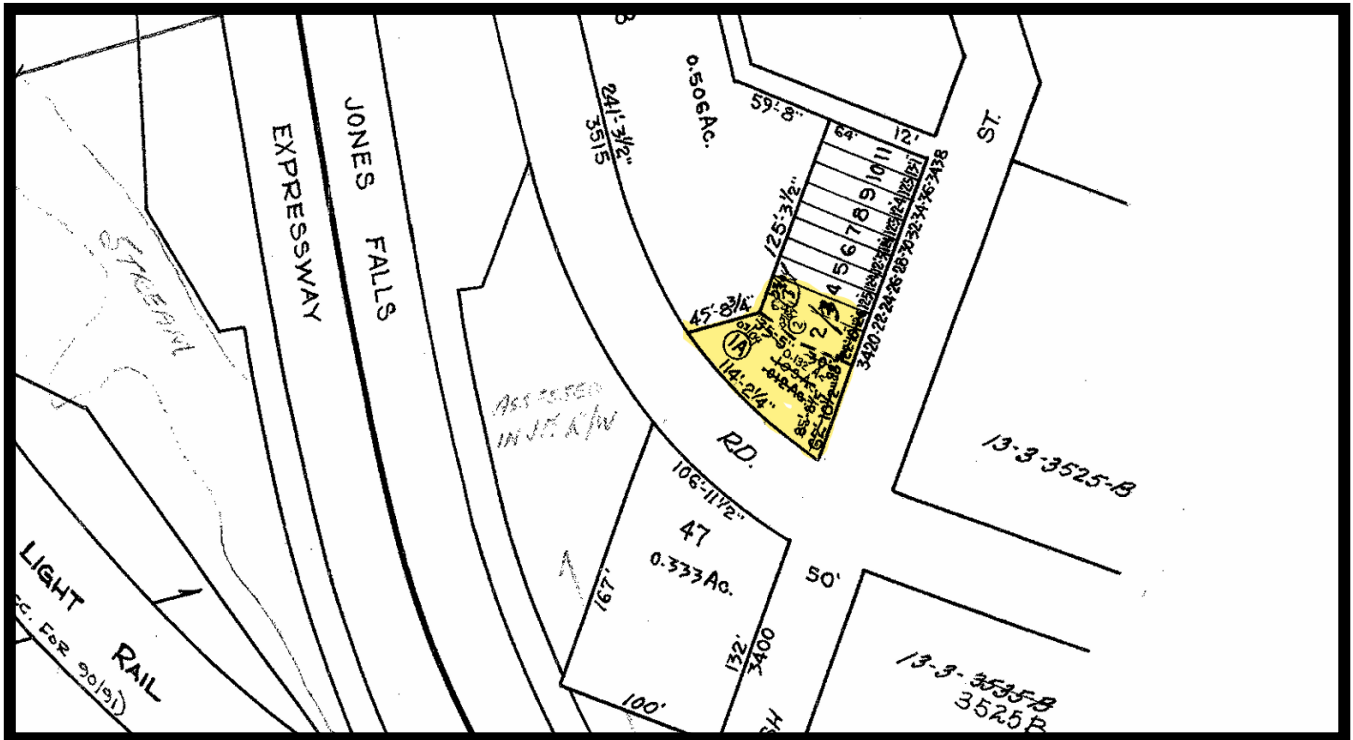


# Gold And Company

Commercial Real Estate in the Baltimore Metropolitan Area

**3420 Ash St. Baltimore, MD 21211**

## Block Map



**Jim Chivers / Will McCullough / Alex Simone 410.578.1300 (Office)**

**Gold And Company, LLC**

**5601 Newbury St.**

**Baltimore, MD 21209**

**[www.goldcommercial.net](http://www.goldcommercial.net)**

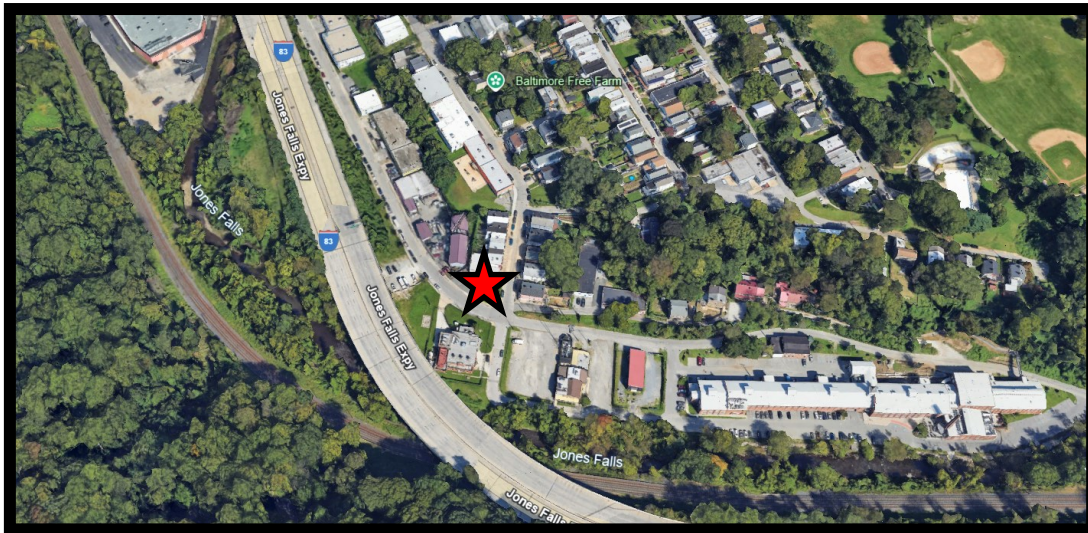


# **Gold And Company**

**Commercial Real Estate in the Baltimore Metropolitan Area**

**3420 Ash St. Baltimore, MD 21211**

## **Aerial and Map**



**Jim Chivers / Will McCullough / Alex Simone**  
**Gold And Company, LLC**  
**5601 Newbury St.**  
**Baltimore, MD 21209**

**410.578.1300 (Office)**

**[www.goldcommercial.net](http://www.goldcommercial.net)**