



# GOLD AND COMPANY, LLC

[WWW.GOLDCOMMERCIAL.NET](http://WWW.GOLDCOMMERCIAL.NET)

*Commercial Real Estate in the Baltimore Metropolitan Area*



**2767 Wilkens Ave. Baltimore, MD 21223**

**For More Information:**

**Jim Chivers**  
Sr. Vice President  
443.928.7522 cell  
jim@goldcommercial.net

**Will McCullough, SIOR**  
Vice President  
410.292.2985 cell  
will@goldcommercial.net

[www.goldcommercial.net](http://www.goldcommercial.net)

**Jon Schulman**  
Rockpark Property Grp.  
410-427-6703  
jschulman@rockparkpg.com

- **Industrial / Yard Available FOR LEASE**
- **2.58 Acres**
- **I-1 Zoning (Industrial—Baltimore City)**
- **Enterprise Zone**
- **Level Lot**
- **Fenced and Lit**
- **Smaller Drive-In Maintenance Building w/ Separate Office**
- **Good access to I-95 / SW Baltimore Industrial Market**
- **Ideal for Trailer, Contractors Equipment, IOS Uses**
- **Call For More Information**

This property offering is subject to change without notice. All information is deemed reliable but not guaranteed.



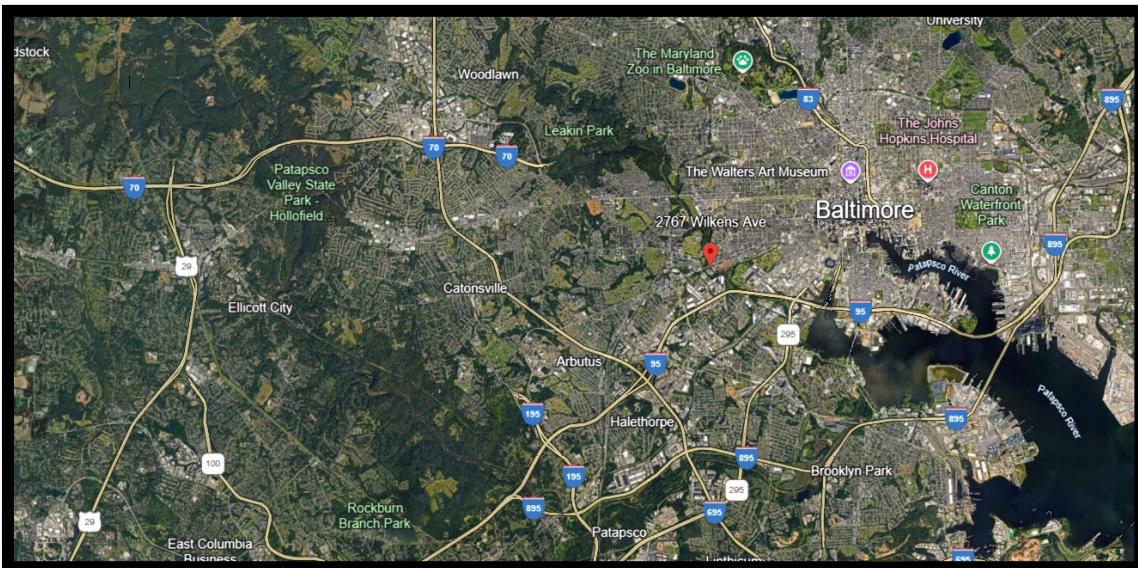
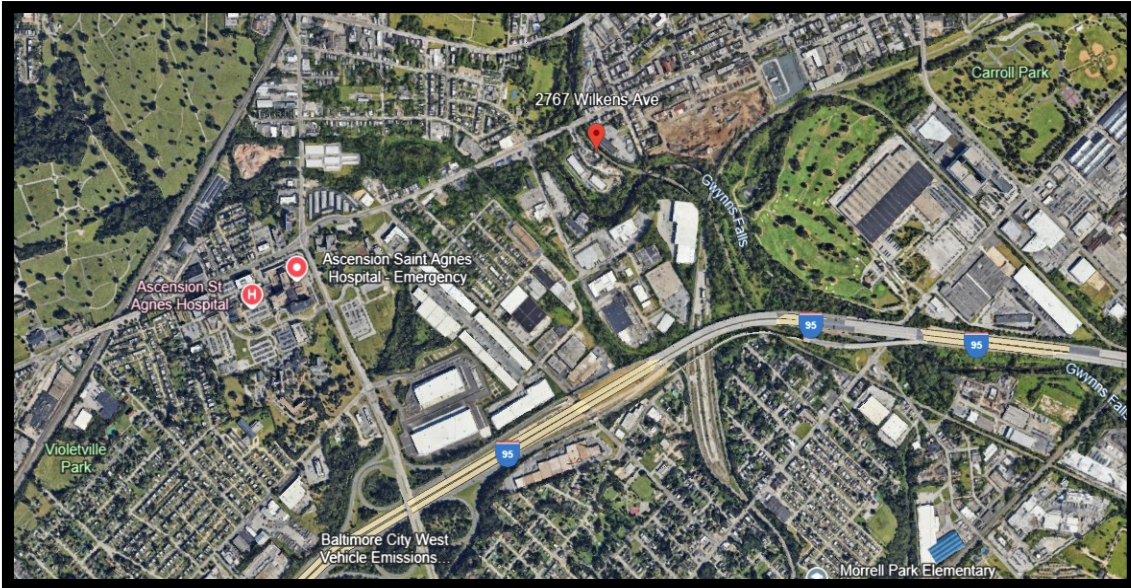


# **Gold And Company**

**Commercial Real Estate in the Baltimore Metropolitan Area**

**2767 Wilkens Ave. Baltimore, MD 21223**

## **Map**



**Jim Chivers / Will McCullough**  
**Gold And Company, LLC**  
**5601 Newbury St.**  
**Baltimore, MD 21209**

**410.578.1300 (Office)**

**[www.goldcommercial.net](http://www.goldcommercial.net)**

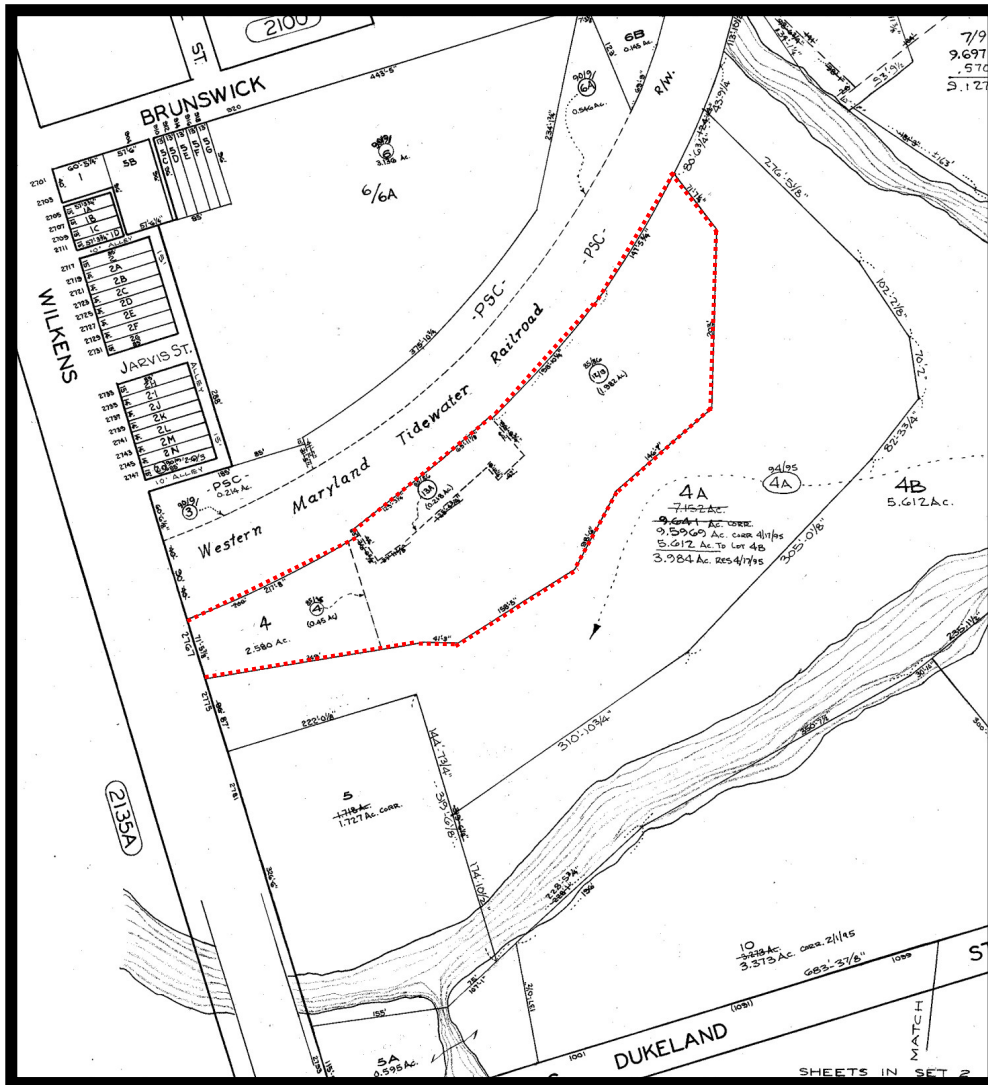


# Gold And Company

Commercial Real Estate in the Baltimore Metropolitan Area

**2767 Wilkens Ave. Baltimore, MD 21223**

## Block Map



**Jim Chivers / Will McCullough**  
**Gold And Company, LLC**  
**5601 Newbury St.**  
**Baltimore, MD 21209**

**410.578.1300 (Office)**

**[www.goldcommercial.net](http://www.goldcommercial.net)**