



GOLD AND COMPANY, LLC

WWW.GOLDCOMMERCIAL.NET

Commercial Real Estate in the Baltimore Metropolitan Area



1109-1117 Bayard St. Baltimore, MD 21230

For More Information:

Jim Chivers
Sr. Vice President
443.928.7522 cell
jim@goldcommercial.net

Will McCullough, SIOR
Vice President
410.292.2985 cell
will@goldcommercial.net

www.goldcommercial.net

- **Investment Residential Portfolio Available FOR SALE**
- **Located in the Pigtown Neighborhood**
- **5 Parcels**
- **+/- 70' Frontage on Bayard St.**
- **Adjacent from Carroll Park**
- **2 Story Brick Multi-Tenanted Rowhomes**
- **Four of the Five Rowhomes are Currently Leased**
- **Recent Improvements**
- **Call For More Information**



Gold And Company

Commercial Real Estate in the Baltimore Metropolitan Area

1109-1117 Bayard St. Baltimore, MD 21230

Additional Aerial



**Jim Chivers / Will McCullough
Gold And Company, LLC
5601 Newbury St.
Baltimore, MD 21209**

410.578.1300 (Office)

www.goldcommercial.net

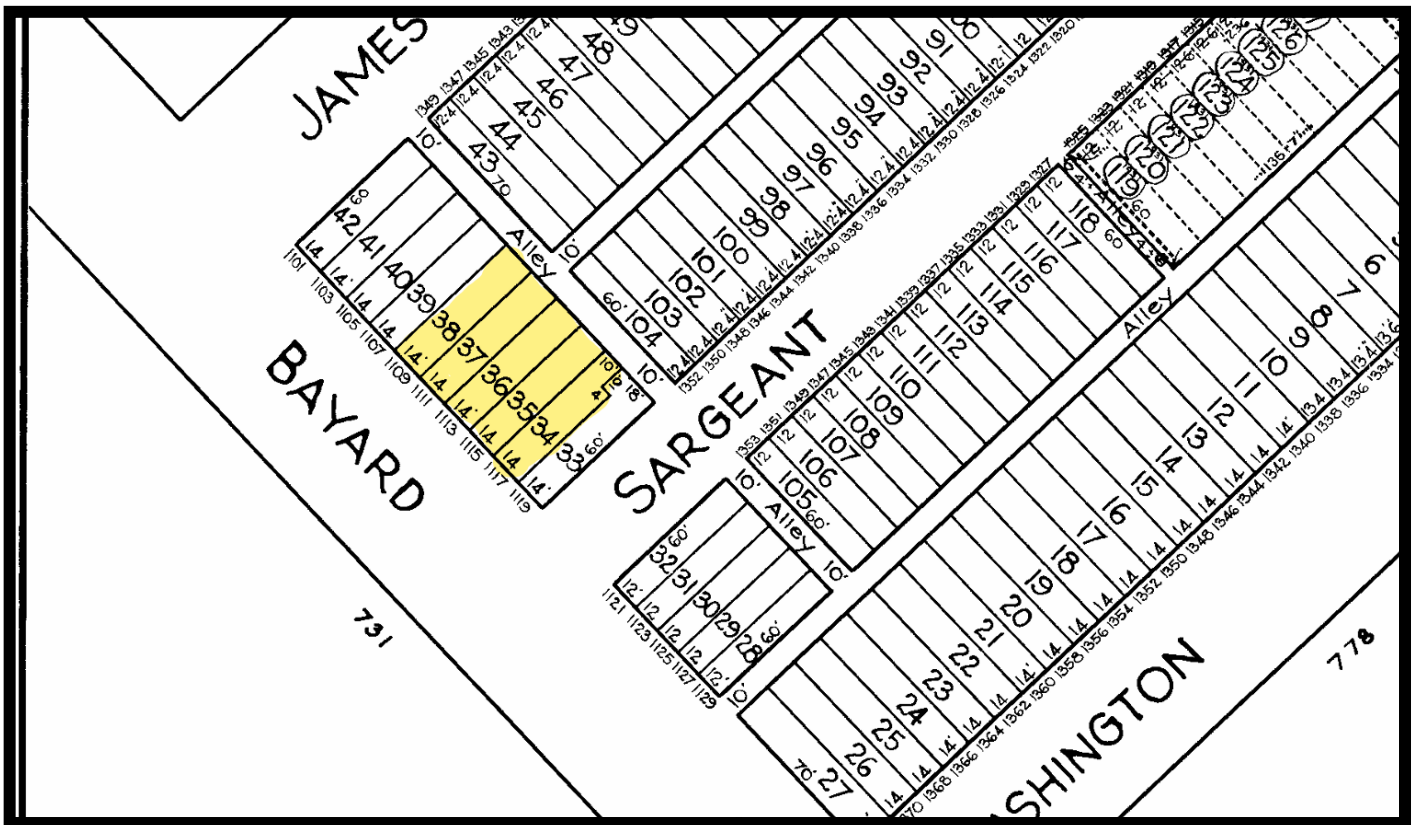


Gold And Company

Commercial Real Estate in the Baltimore Metropolitan Area

1109-1117 Bayard St. Baltimore, MD 21230

Block Map



Jim Chivers / Will McCullough
Gold And Company, LLC
5601 Newbury St.
Baltimore, MD 21209

410.578.1300 (Office)

www.goldcommercial.net