



GOLD AND COMPANY, LLC

WWW.GOLDCOMMERCIAL.NET

Commercial Real Estate in the Baltimore Metropolitan Area



1900 Benhill Ave. Baltimore, MD 21226

Gold And Company, LLC

For More Information:

Jim Chivers
443.928.7522 cell
jim@goldcommercial.net

Will McCullough
410.292.2985 cell
will@goldcommercial.net

John Roe
410.960.9554 cell
john@goldcommercial.net

www.goldcommercial.net

- +/- 19,000 sf Industrial Building FOR SALE
- 0.69 Total Acres
- MI—Maritime Industrial—Baltimore City
- +/- 2,400 sf Drive-In Maintenance Building
- Drive-In Doors and Dock Platform Loading
- +/- 1,500 sf Office Space with Locker Area
- Heavy Power
- Solar Panels on the Main Building
- Interior Cranes
- South Baltimore City—decent access to major highways
- Call For More Information

This property offering is subject to change without notice. All information is deemed reliable but not guaranteed.

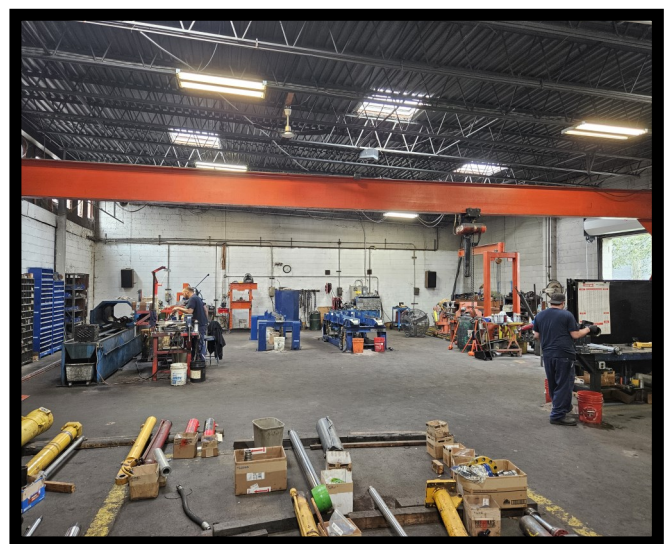
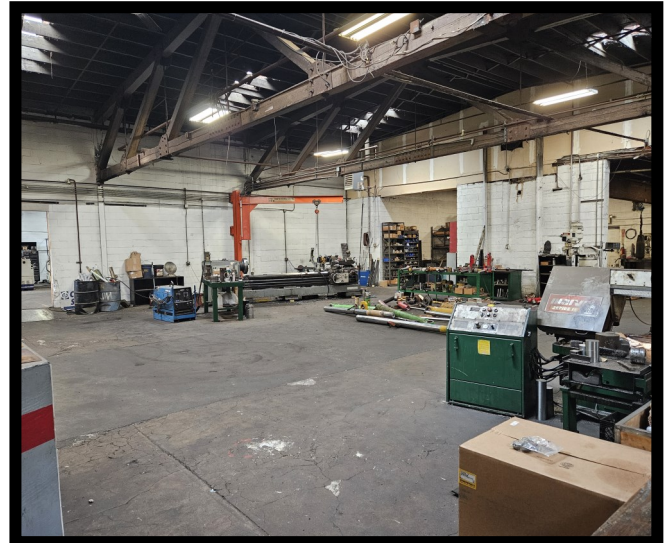


Gold And Company

Commercial Real Estate in the Baltimore Metropolitan Area

1900 Benhill Ave. Baltimore, MD 21226

Interior Photos



Jim Chivers / Will McCullough / John Roe
Gold And Company, LLC
5601 Newbury St.
Baltimore, MD 21209

410.578.1300 (Office)

www.goldcommercial.net

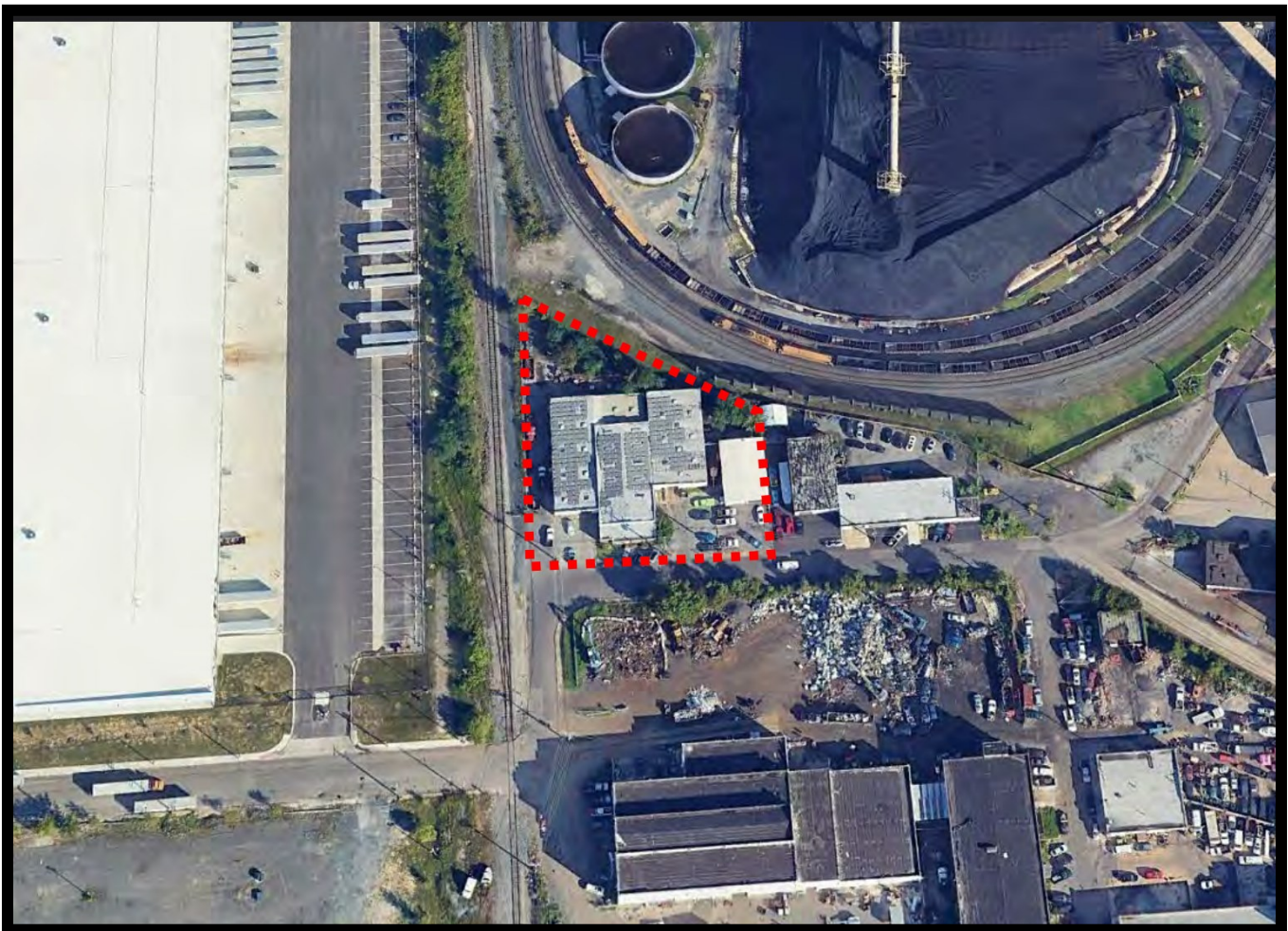


Gold And Company

Commercial Real Estate in the Baltimore Metropolitan Area

1900 Benhill Ave. Baltimore, MD 21226

Property Layout



Jim Chivers / Will McCullough / John Roe
Gold And Company, LLC
5601 Newbury St.
Baltimore, MD 21209

410.578.1300 (Office)

www.goldcommercial.net

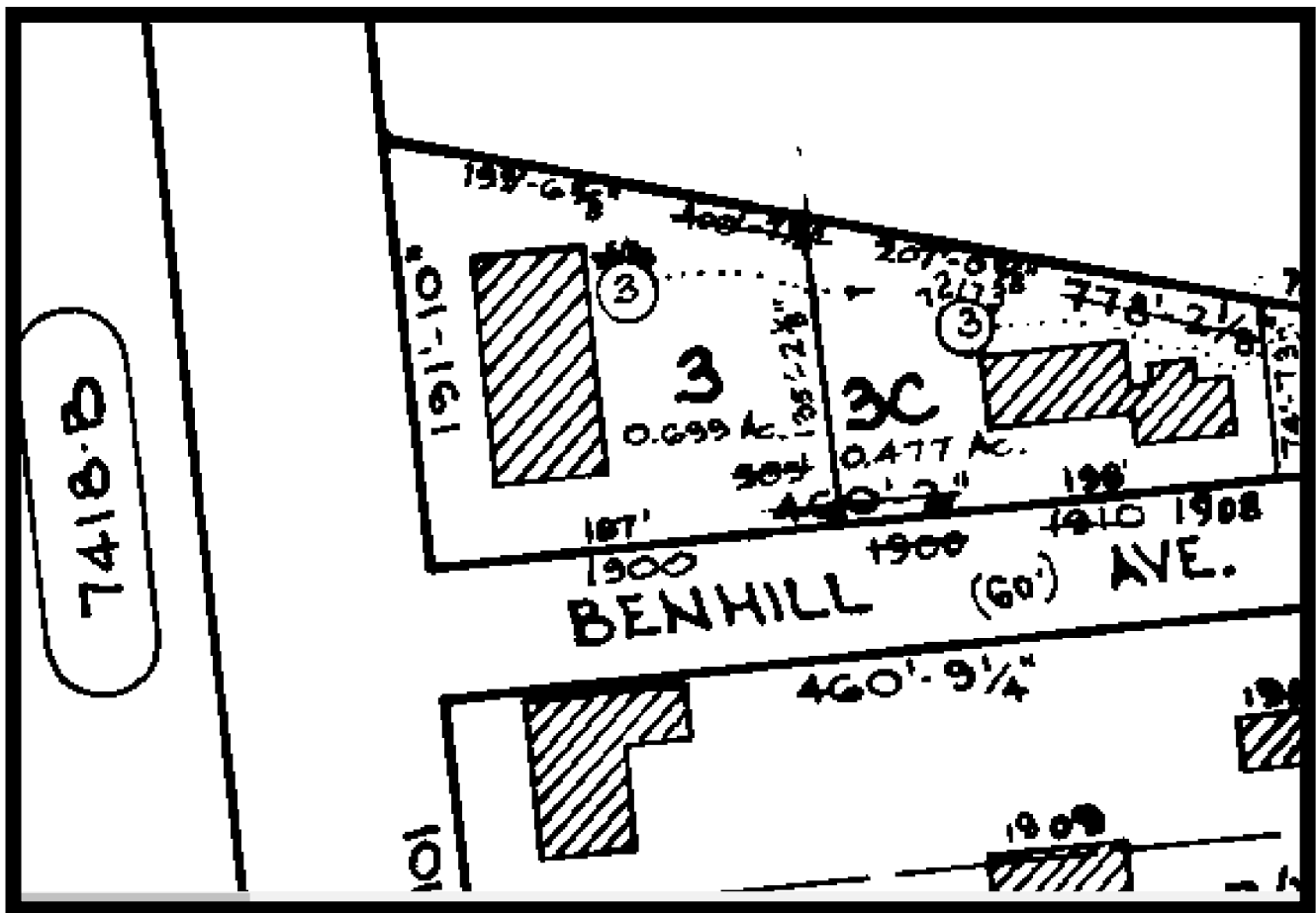


Gold And Company

Commercial Real Estate in the Baltimore Metropolitan Area

1900 Benhill Ave. Baltimore, MD 21226

Block Map



Jim Chivers / Will McCullough / John Roe
Gold And Company, LLC
5601 Newbury St.
Baltimore, MD 21209

410.578.1300 (Office)

www.goldcommercial.net

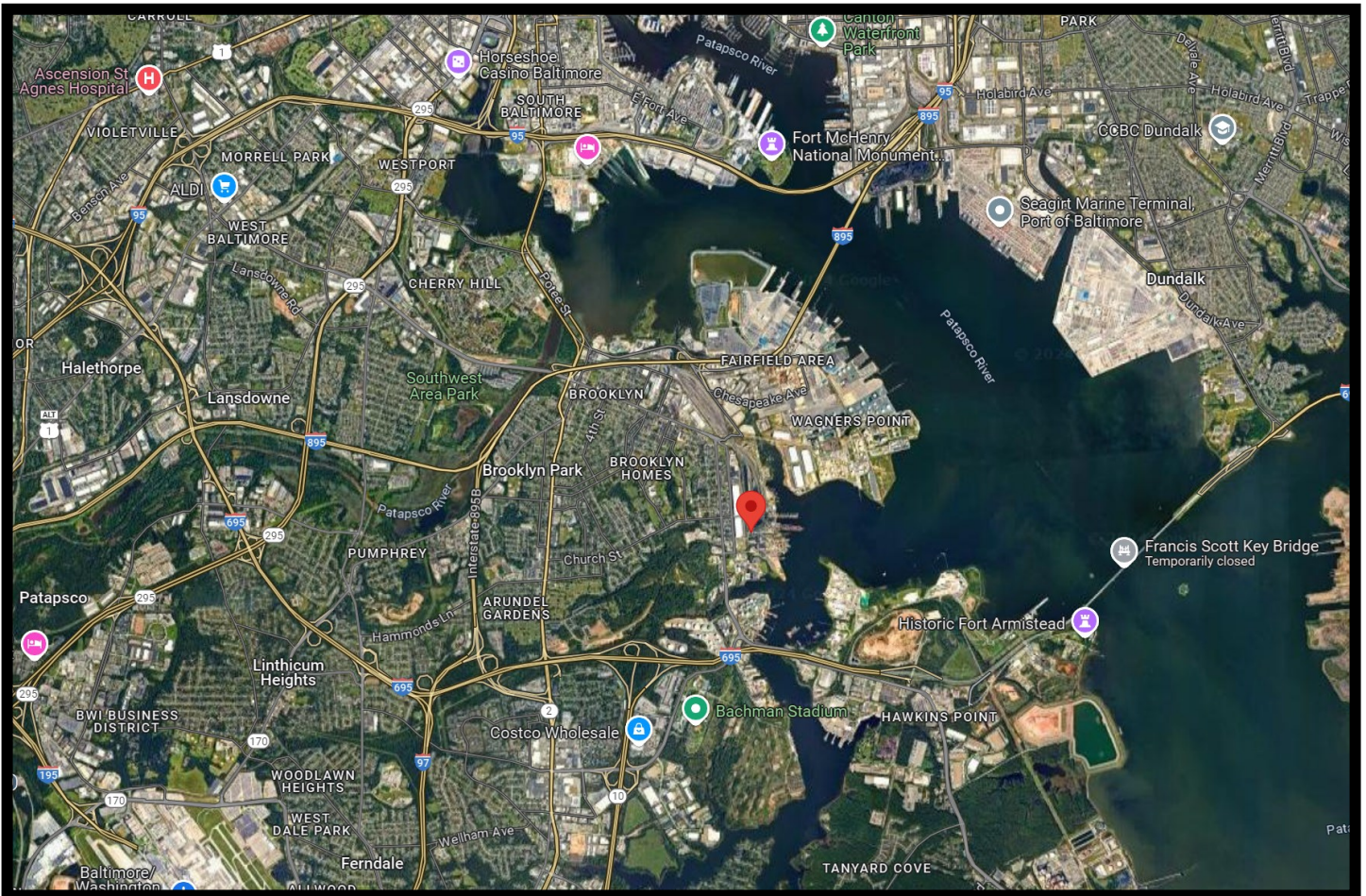


Gold And Company

Commercial Real Estate in the Baltimore Metropolitan Area

1900 Benhill Ave. Baltimore, MD 21226

Map



Jim Chivers / Will McCullough / John Roe
Gold And Company, LLC
5601 Newbury St.
Baltimore, MD 21209

410.578.1300 (Office)

www.goldcommercial.net