



GOLD AND COMPANY, LLC

WWW.GOLDCOMMERCIAL.NET

Commercial Real Estate in the Baltimore Metropolitan Area



1217 E. Preston Street, Baltimore, MD 21201

Gold And Company, LLC

**5601 Newbury St.
Baltimore, MD 21209**

For More Information:

**Jim Chivers
Sr. Vice President
443.928.7522 cell
jim@goldcommercial.net**

**Will McCullough, SIOR
Vice President
410.292.2985 cell
will@goldcommercial.net**

www.goldcommercial.net

- **Multi-Family Building FOR SALE**
- **+/- 15,904 sf Three-Story Building**
- **12 Residential Units**
 - **Six (6) Three (3) Bedrooms**
 - **Three (3) Two (2) Bedrooms**
 - **Three (3) One (1) Bedroom**
- **Zoned R-8—Opportunity Zone Qualified**
- **Some Recent Renovations**
- **Located in Historic Oliver Neighborhood in East Baltimore City**
- **Near JHH and Kennedy Krieger**
- **Contact For More Information**

This property offering is subject to change without notice. All information is deemed reliable but not guaranteed.

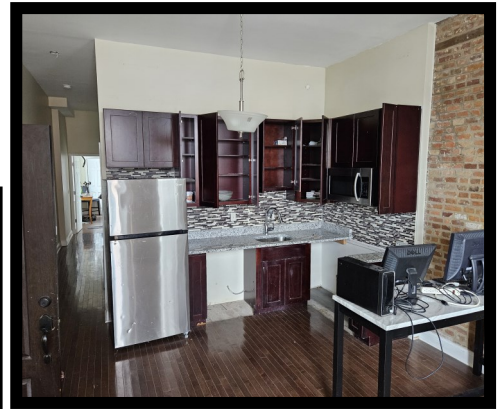
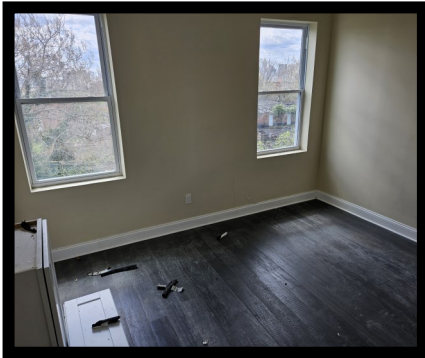


Gold And Company

Commercial Real Estate in the Baltimore Metropolitan Area

1217 E Preston Street, Baltimore, MD 21201

Interior Pictures



Jim Chivers / Will McCullough
Gold And Company, LLC
5601 Newbury St.
Baltimore, MD 21209

410.578.1300 (Office)

www.goldcommercial.net

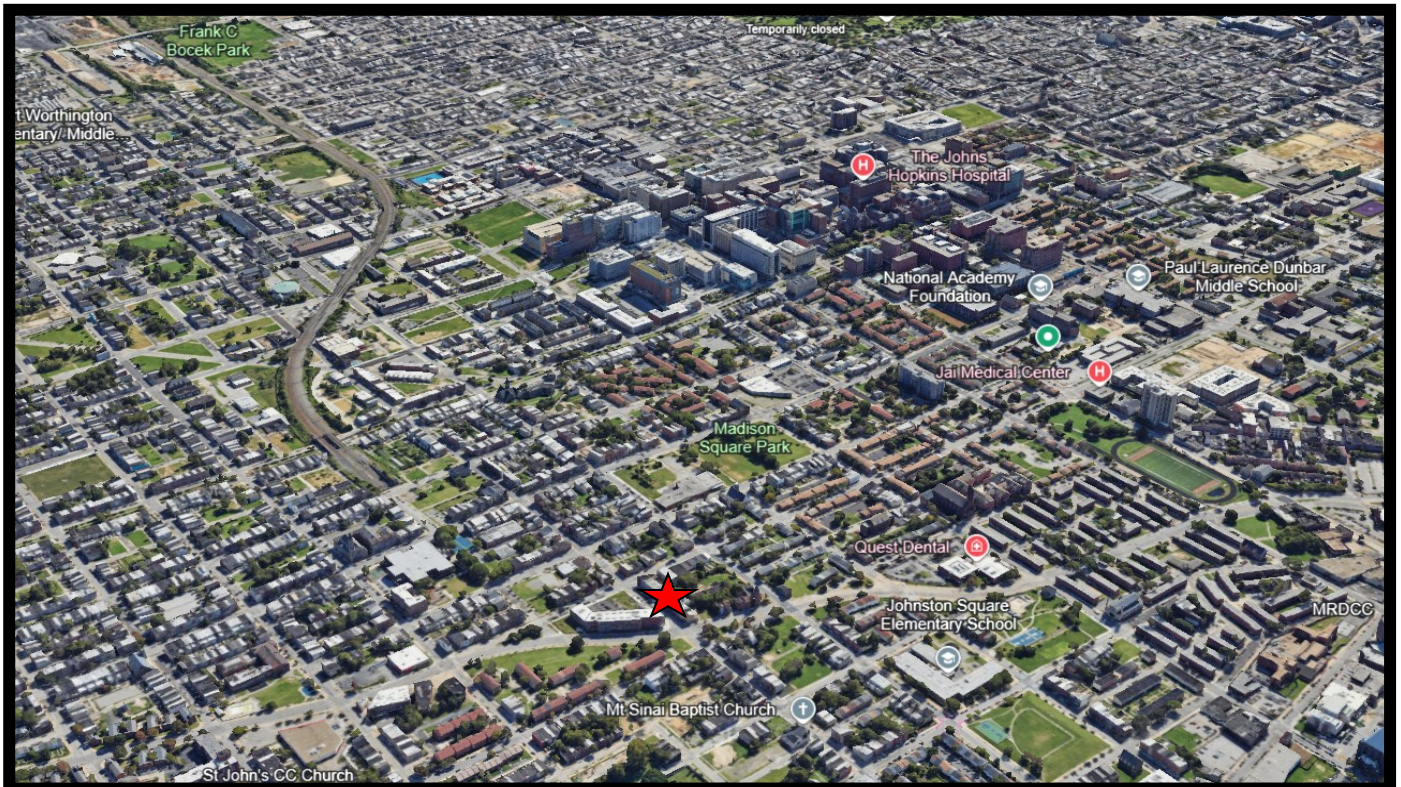


Gold And Company

Commercial Real Estate in the Baltimore Metropolitan Area

1217 E Preston Street, Baltimore, MD 21201

Aerials



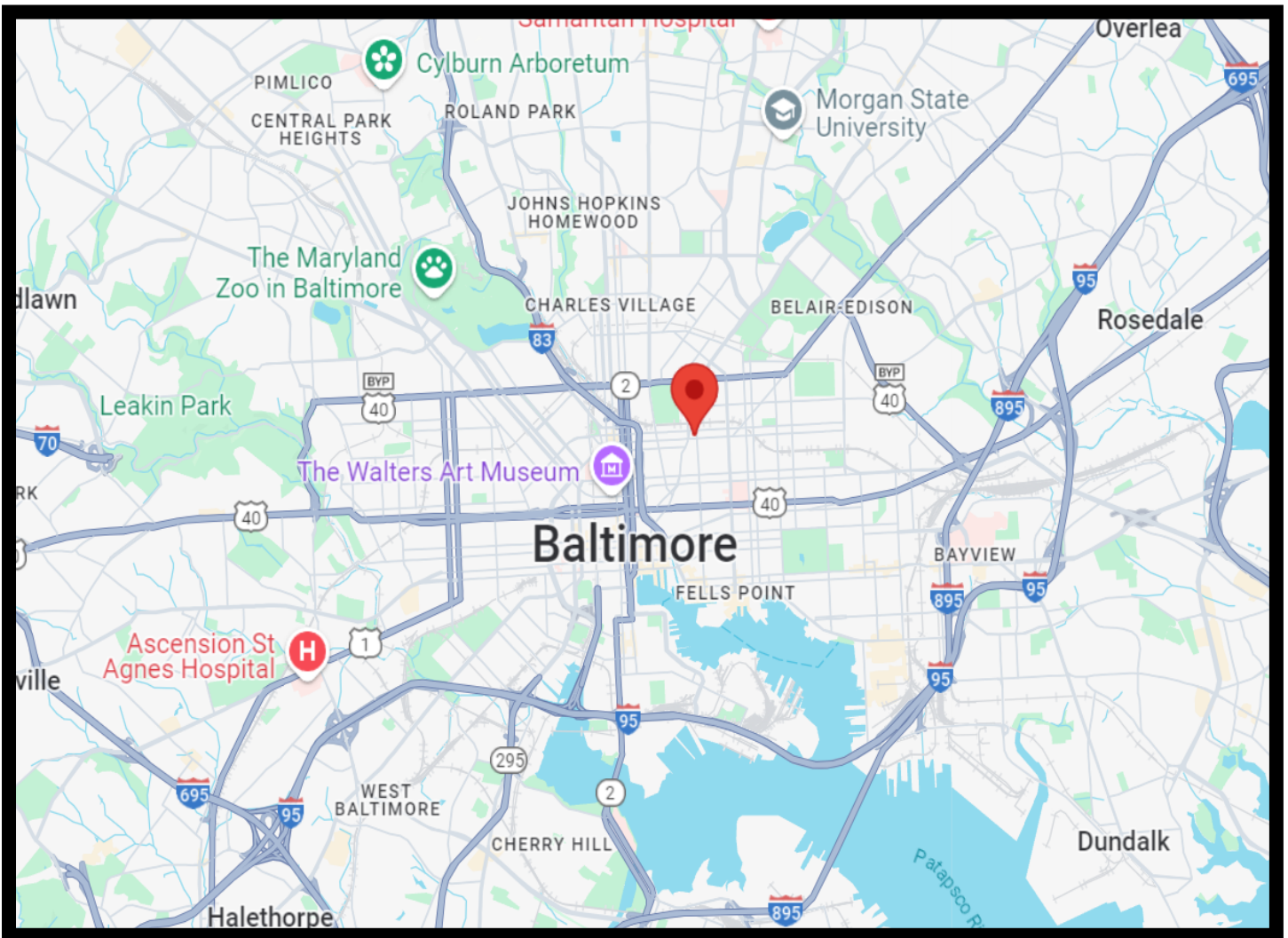


Gold And Company

Commercial Real Estate in the Baltimore Metropolitan Area

1217 E Preston Street, Baltimore, MD 21201

Location Map



Jim Chivers / Will McCullough
Gold And Company, LLC
5601 Newbury St.
Baltimore, MD 21209

410.578.1300 (Office)

www.goldcommercial.net