



GOLD AND COMPANY, LLC



4809 Ritchie Highway, Baltimore, MD 21225

Gold and Company, LLC

**5601 Newbury St.
Baltimore, MD 21209**

**Alex Simone
443.845.4413
Alex@goldcommercial.net**

**Mitch Gold
410.456.2492
Mitch@goldcommercial.net**

**Office: 410.578.1300
www.goldcommercial.net**

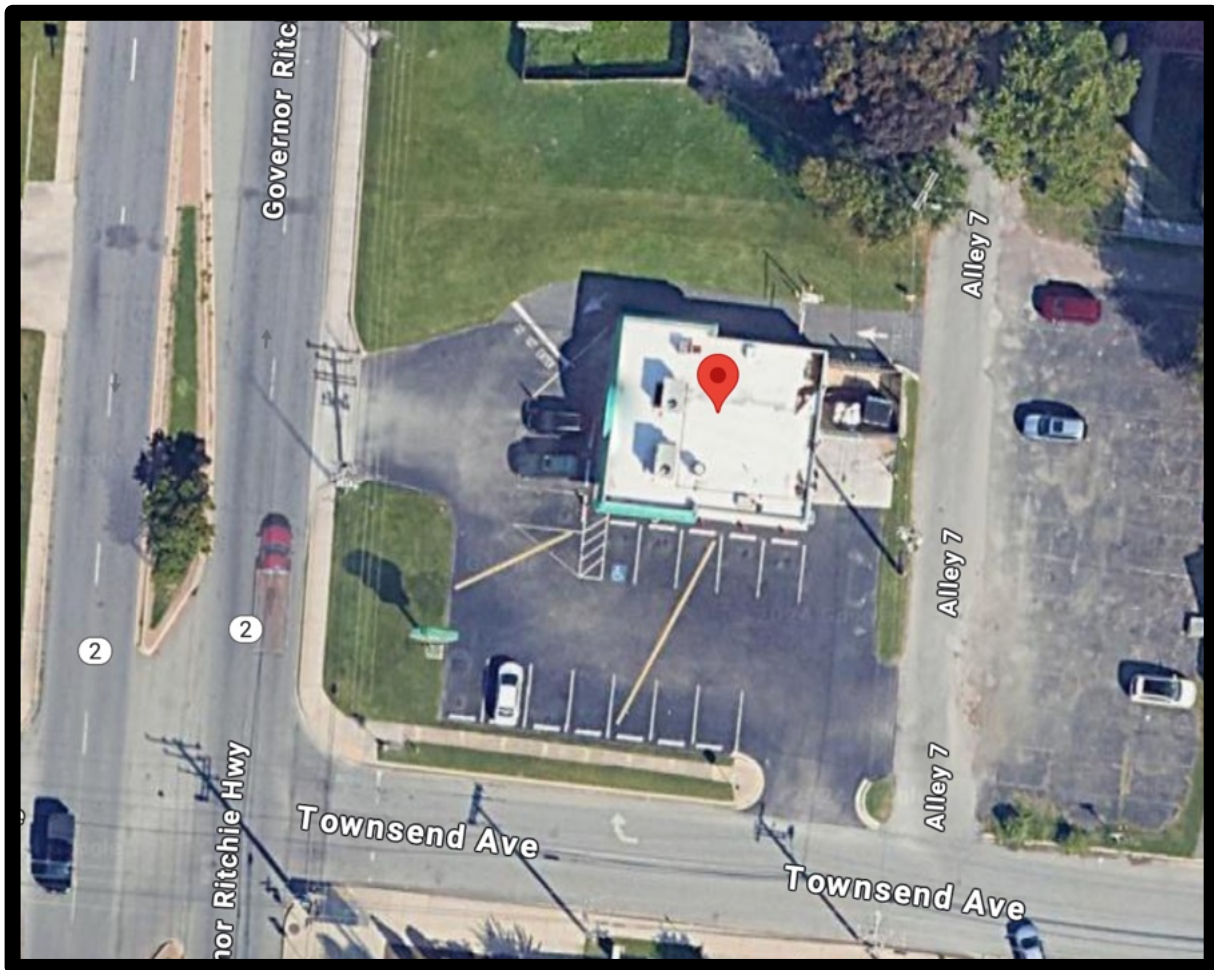
- **Leased Papa John's property
FOR SALE**
- **5 years remaining on lease**
- **30 year Tenant**
- **60 location franchisee**
- **Located on busy Ritchie Hwy**
- **26,000 traffic count**
- **Anne Arundel County**
 - **Close to Baltimore City**
- **Drive thru lane**
- **+/- 18 parking spaces**



Gold and Company

Commercial Real Estate in the Baltimore Metropolitan Area

4809 Ritchie Highway, Baltimore, MD 21225



Alex Simone / Mitch Gold
Gold and Company, LLC
5601 Newbury St.
Baltimore, MD 21209

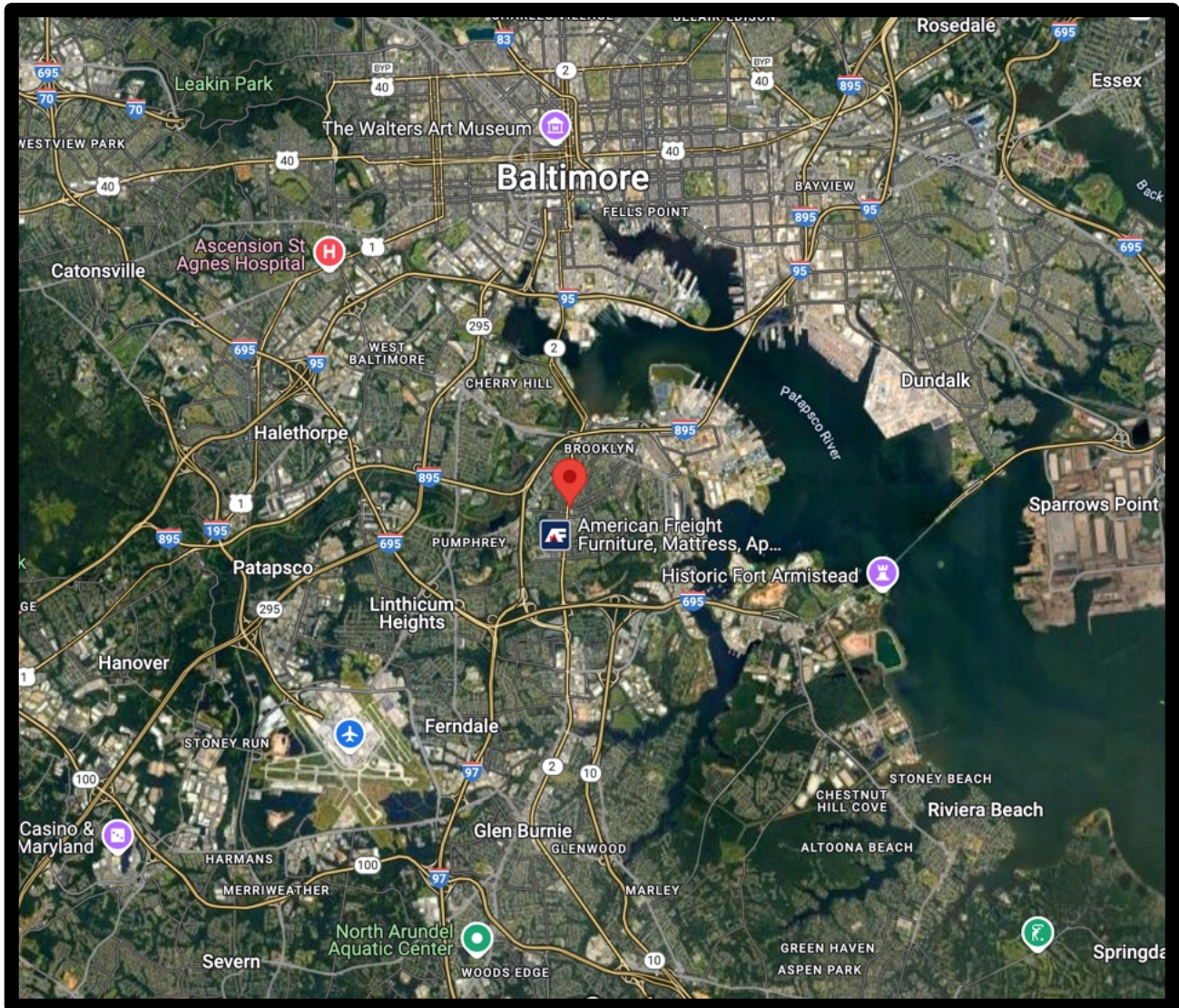
410.578.1300
www.goldcommercial.net



Est. 1999

Gold and Company

Commercial Real Estate in the Baltimore Metropolitan Area



Alex Simone / Mitch Gold
Gold and Company, LLC
5601 Newbury St.
Baltimore, MD 21209

410.578.1300
www.goldcommercial.net