



GOLD AND COMPANY, LLC

WWW.GOLDCOMMERCIAL.NET

Commercial Real Estate in the Baltimore Metropolitan Area



1200 and 1210 N. Macon St. Baltimore 21205

Gold And Company, LLC

**5601 Newbury St.
Baltimore, MD 21209**

**Jim Chivers
443.928.7522 cell
jim@goldcommercial.net**

www.goldcommercial.net

- **Industrial Properties Available FOR SALE**
- **2 Parcels**
- **1210 N. Macon St.**
 - **+/- 9,000 sf / Drive-In Access / Currently Vacant**
- **1200 N. Macon St.**
 - **+/- 8,000 sf / Drive-In and Dock / Currently Leased**
- **+/- 17,000 sf in Two Buildings**
- **0.87 acre in Two Parcels**
- **I-2 Zoning (Heavy Industrial—Baltimore City)**
- **Heavy Power**
- **Located in a Qualified Hub Zone and Enterprise Zone**
- **New Roof and Recent Improvements**

This property offering is subject to change without notice. All information is deemed reliable but not guaranteed.



Gold And Company

Commercial Real Estate in the Baltimore Metropolitan Area

1200 and 1210 N. Macon St. Baltimore

Additional Pictures of 1210 N Macon St.



Jim Chivers
Gold And Company, LLC
5601 Newbury St.
Baltimore, MD 21209

410.578.1300 (Office)

www.goldcommercial.net

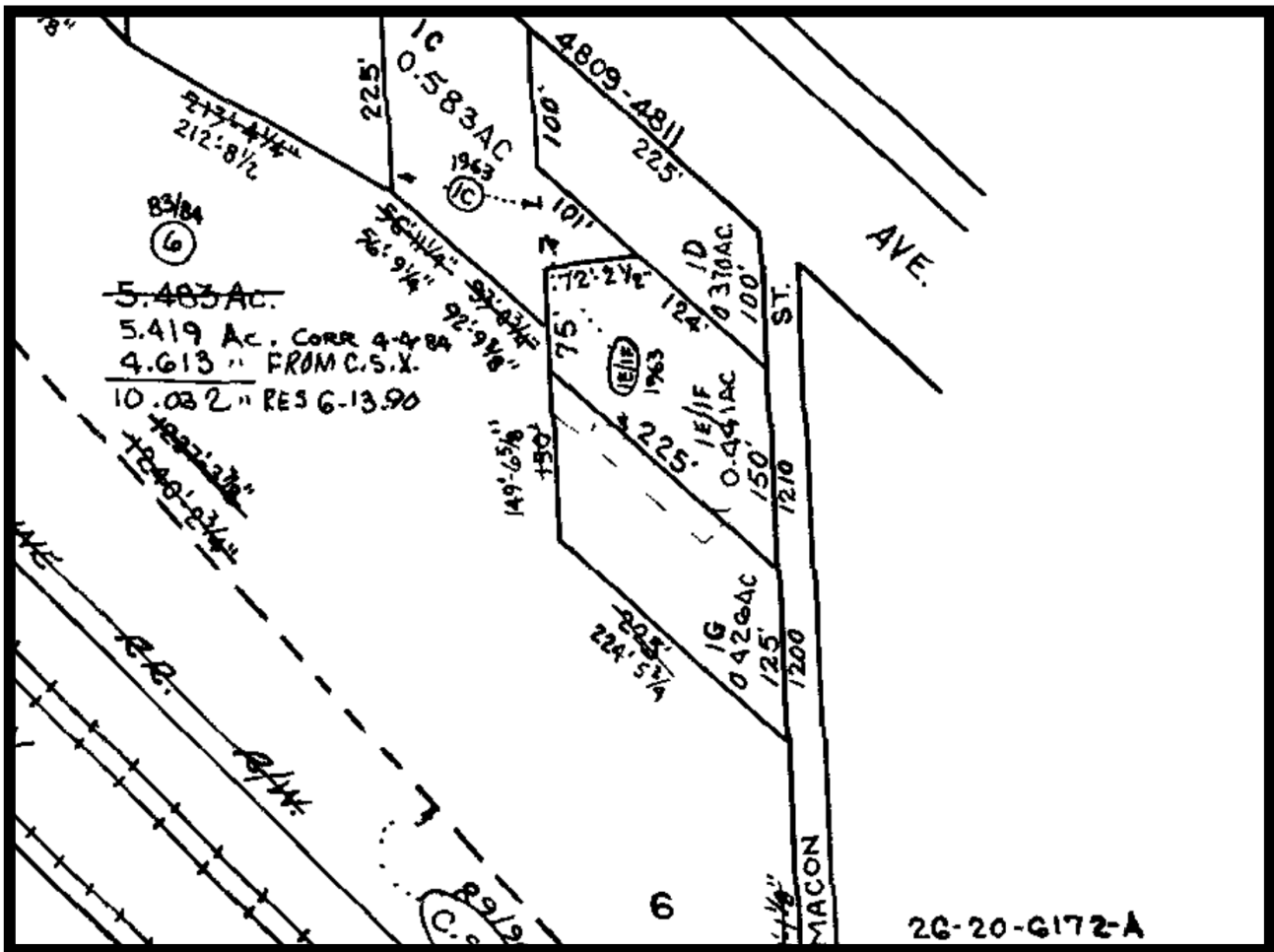


Gold And Company

Commercial Real Estate in the Baltimore Metropolitan Area

1200 and 1210 N. Macon St. Baltimore

Baltimore City Block Map Lot 1E/F and 1G



Jim Chivers
Gold And Company, LLC
5601 Newbury St.
Baltimore, MD 21209

410.578.1300 (Office)

www.goldcommercial.net

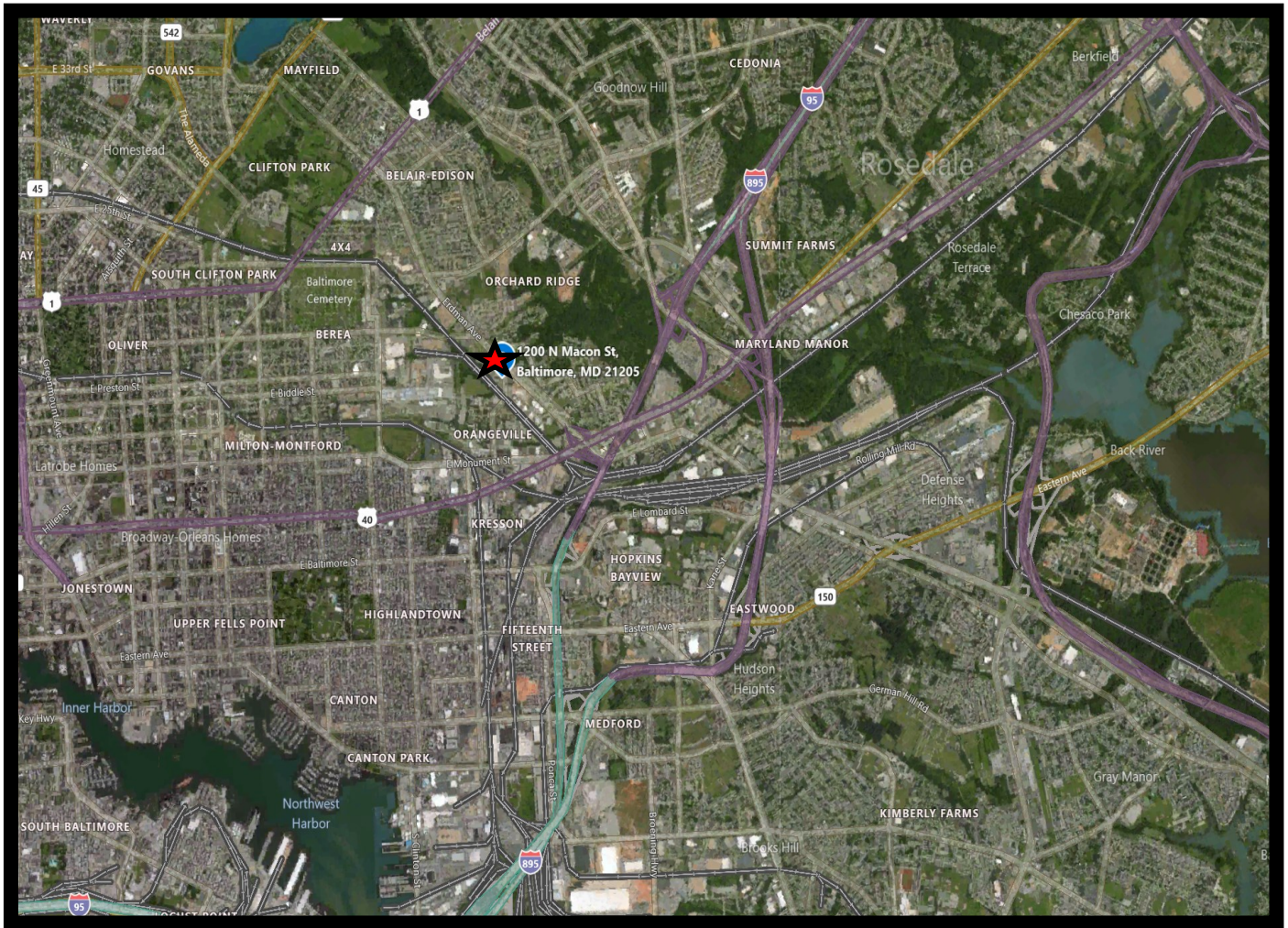


Gold And Company

Commercial Real Estate in the Baltimore Metropolitan Area

1200 and 1210 N. Macon St. Baltimore

MAP



Jim Chivers
Gold And Company, LLC
5601 Newbury St.
Baltimore, MD 21209

410.578.1300 (Office)

www.goldcommercial.net