



# **GOLD AND COMPANY, LLC**

**WWW.GOLDCOMMERCIAL.NET**

***Commercial Real Estate in the Baltimore Metropolitan Area***



**798 Sunburst Highway, Cambridge MD 21613**

## **Gold And Company, LLC**

**5601 Newbury St.  
Baltimore, MD 21209**

***For More Information:***

**Jim Chivers  
Sr. Vice President  
443.928.7522 cell  
jim@goldcommercial.net**

**Will McCullough, SIOR  
Vice President  
410.292.2985 cell  
will@goldcommercial.net**

**www.goldcommercial.net**

- **11,050 sf Free-Standing Retail AVAILABLE**
- **Access & Visibility along Route 50 (Ocean Gateway/Sunburst Highway)**
- **Located in Cambridge Marketplace next to U of MD Shore Medical Center**
- **Nestled Strategically Btwn Easton & Salisbury**
- **Zoned C-2 (Retail) for a Wide Range of Uses**
- **Abundant Surface Parking**
- **High Traffic Count (over 30,000 ADT)**

This property offering is subject to change without notice. All information is deemed reliable but not guaranteed.

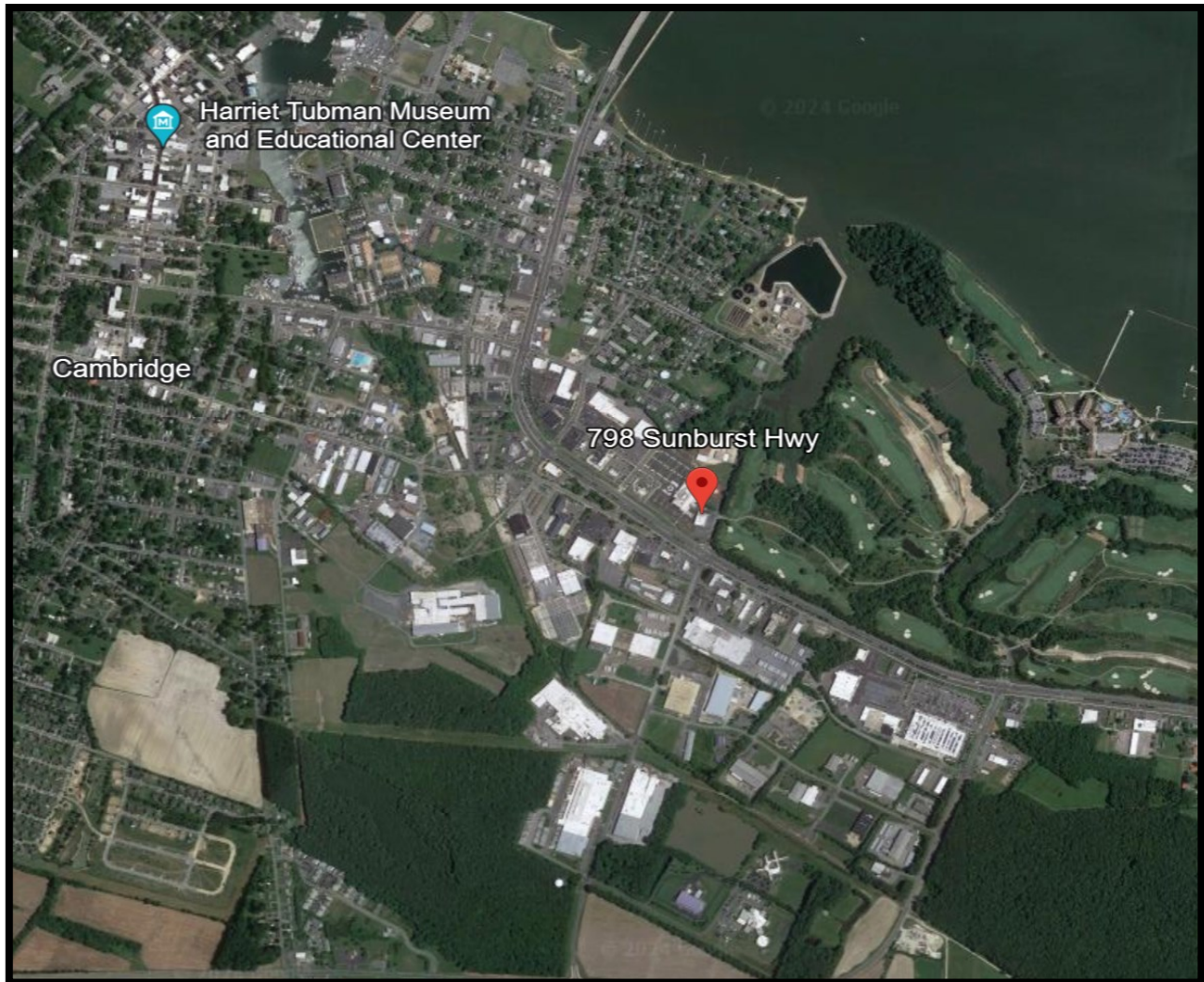


# ***Gold And Company***

***Commercial Real Estate in the Baltimore Metropolitan Area***

**798 Sunburst Highway, Cambridge, MD 21613**

## **Location Map**



**Jim Chivers / Will McCullough**  
**Gold And Company, LLC**  
**5601 Newbury St.**  
**Baltimore, MD 21209**

**410.578.1300 (Office)**

**[www.goldcommercial.net](http://www.goldcommercial.net)**



# **Gold And Company**

**Commercial Real Estate in the Baltimore Metropolitan Area**

**798 Sunburst Highway, Cambridge, MD 21613**

## **Additional Photos**



**Jim Chivers / Will McCullough**  
**Gold And Company, LLC**  
**5601 Newbury St.**  
**Baltimore, MD 21209**

**410.578.1300 (Office)**

**[www.goldcommercial.net](http://www.goldcommercial.net)**

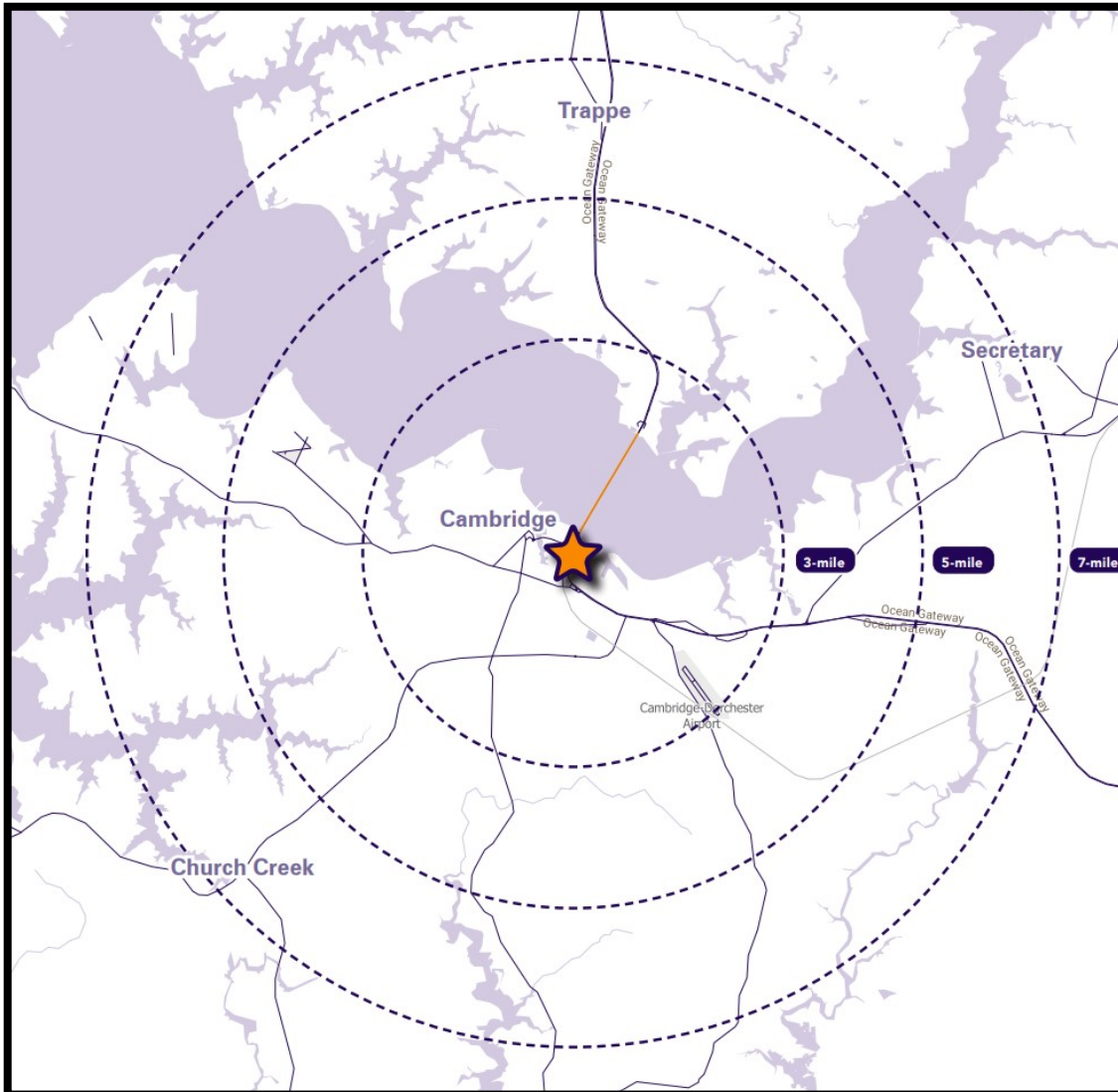


# **Gold And Company**

**Commercial Real Estate in the Baltimore Metropolitan Area**

**798 Sunburst Highway, Cambridge, MD 21613**

## **Drive-Time Aerial**



**Jim Chivers / Will McCullough**  
**Gold And Company, LLC**  
**5601 Newbury St.**  
**Baltimore, MD 21209**

**410.578.1300 (Office)**

**[www.goldcommercial.net](http://www.goldcommercial.net)**