



GOLD AND COMPANY, LLC

WWW.GOLDCOMMERCIAL.NET

Commercial Real Estate in the Baltimore Metropolitan Area



3000 Washington Blvd. Baltimore, MD 21230

Gold And Company, LLC

5601 Newbury St.
Baltimore, MD 21209

For More Information:

Jim Chivers
Sr. Vice President
443.928.7522 cell
jim@goldcommercial.net

Will McCullough, SIOR
Vice President
410.292.2985 cell
will@goldcommercial.net

www.goldcommercial.net

- +/- 3,100 sf Freestanding Building **FOR SALE**
- Professional Office Buildout
- I-1 Zoning—Industrial Baltimore City
- Brick Single Story Freestanding Office
- Hub and Enterprise Zone
- +/- 20 Parking Spaces
- Excellent Exposure
- South Baltimore Location
- Call For More Information

This property offering is subject to change without notice. All information is deemed reliable but not guaranteed.

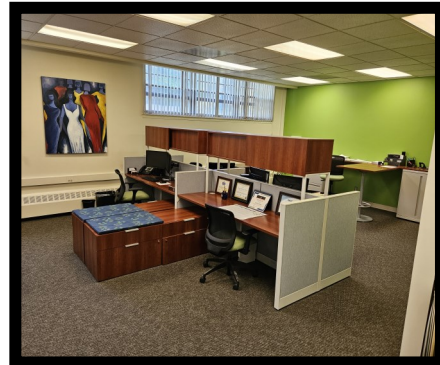


Gold And Company

Commercial Real Estate in the Baltimore Metropolitan Area

3000 Washington Blvd. Baltimore, MD 21230

Pictures



**Jim Chivers / Will McCullough
Gold And Company, LLC
5601 Newbury St.
Baltimore, MD 21209**

410.578.1300 (Office)

www.goldcommercial.net

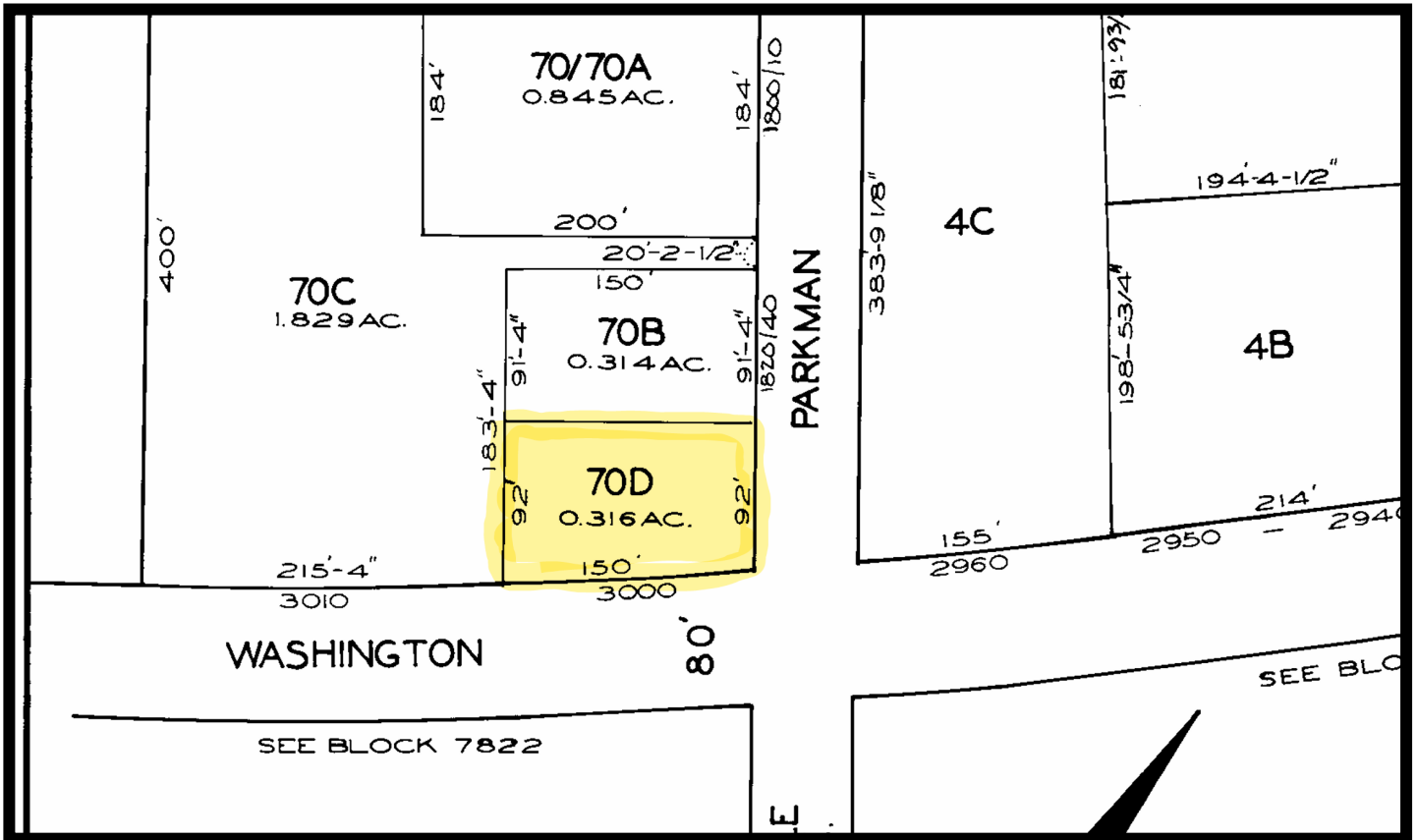


Gold And Company

Commercial Real Estate in the Baltimore Metropolitan Area

3000 Washington Blvd. Baltimore, MD 21230

Block Map



Jim Chivers / Will McCullough
Gold And Company, LLC
5601 Newbury St.
Baltimore, MD 21209

410.578.1300 (Office)

www.goldcommercial.net

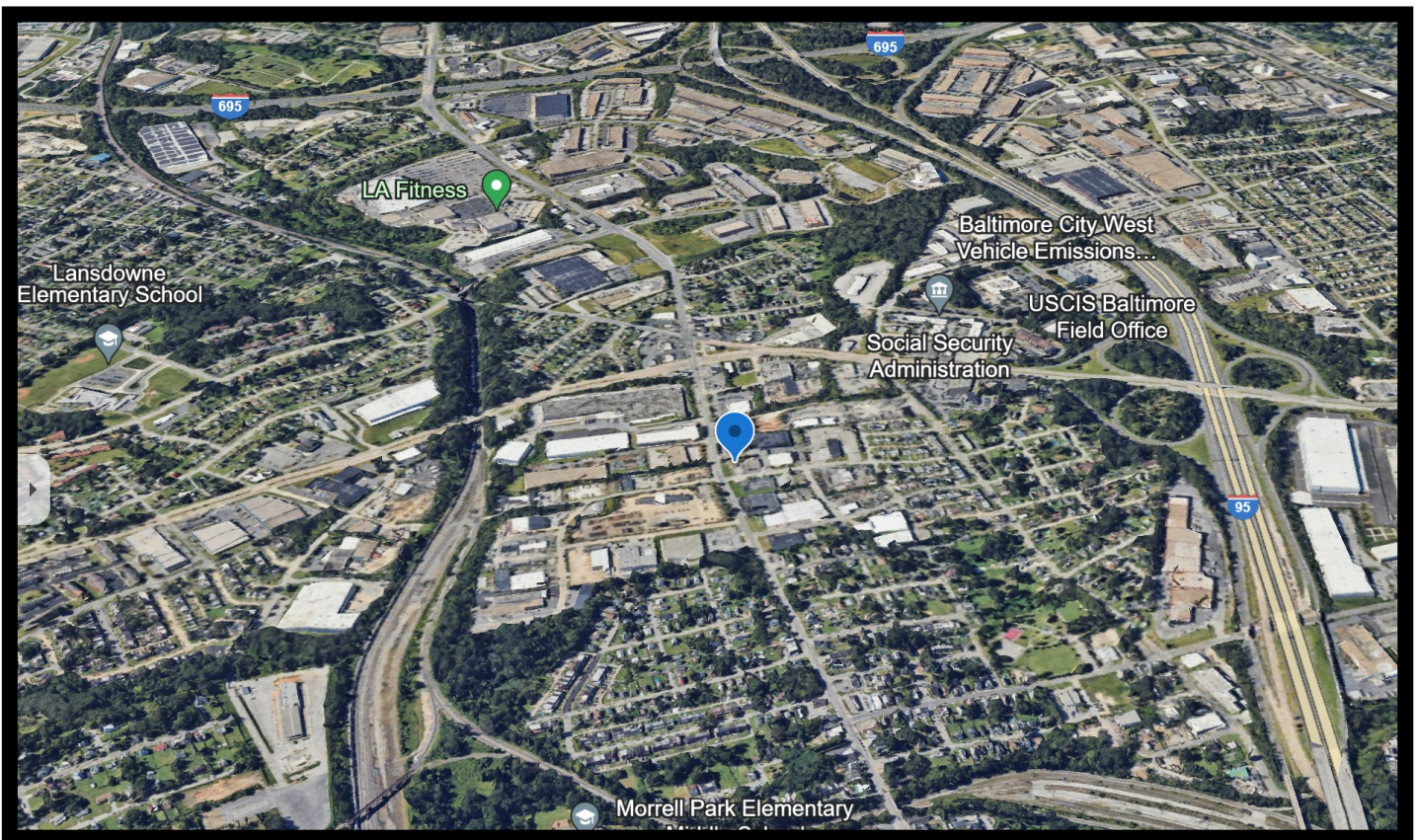


Gold And Company

Commercial Real Estate in the Baltimore Metropolitan Area

3000 Washington Blvd. Baltimore, MD 21230

Location Map



Jim Chivers / Will McCullough
Gold And Company, LLC
5601 Newbury St.
Baltimore, MD 21209

410.578.1300 (Office)

www.goldcommercial.net