



GOLD AND COMPANY, LLC

WWW.GOLDCOMMERCIAL.NET

Commercial Real Estate in the Baltimore Metropolitan Area



8502 Kelso Dr. Essex, MD 21221

Gold And Company, LLC

5601 Newbury St.
Baltimore, MD 21209

For More Information:

Jim Chivers
443.928.7522 cell
jim@goldcommercial.net

Will McCullough
410.292.2985 cell
will@goldcommercial.net

www.goldcommercial.net

- +/- 22,000 Freestanding Building FOR SALE
- 2.67 Acres—Paved Lot
- Built Out As Full-Sized Gym
- +/- 30' Ceiling Height at Center Gable
- Excellent Exposure From I-695
- +/- 149,000 Vehicles Day (MD ADT)
- ML-IM (Baltimore County Industrial Zoning)
- Close Access to I-95 / East Baltimore Submarket
- Call For More Information
- Contact For More Information

This property offering is subject to change without notice. All information is deemed reliable but not guaranteed.



Gold And Company

Commercial Real Estate in the Baltimore Metropolitan Area

8502 Kelso Dr. Essex, MD 21221

Aerial View



Jim Chivers / Will McCullough
Gold And Company, LLC
5601 Newbury St.
Baltimore, MD 21209

410.578.1300 (Office)

www.goldcommercial.net



Gold And Company

Commercial Real Estate in the Baltimore Metropolitan Area

8502 Kelso Dr. Essex, MD 21221

Interior Pictures



Jim Chivers / Will McCullough
Gold And Company, LLC
5601 Newbury St.
Baltimore, MD 21209

410.578.1300 (Office)

www.goldcommercial.net

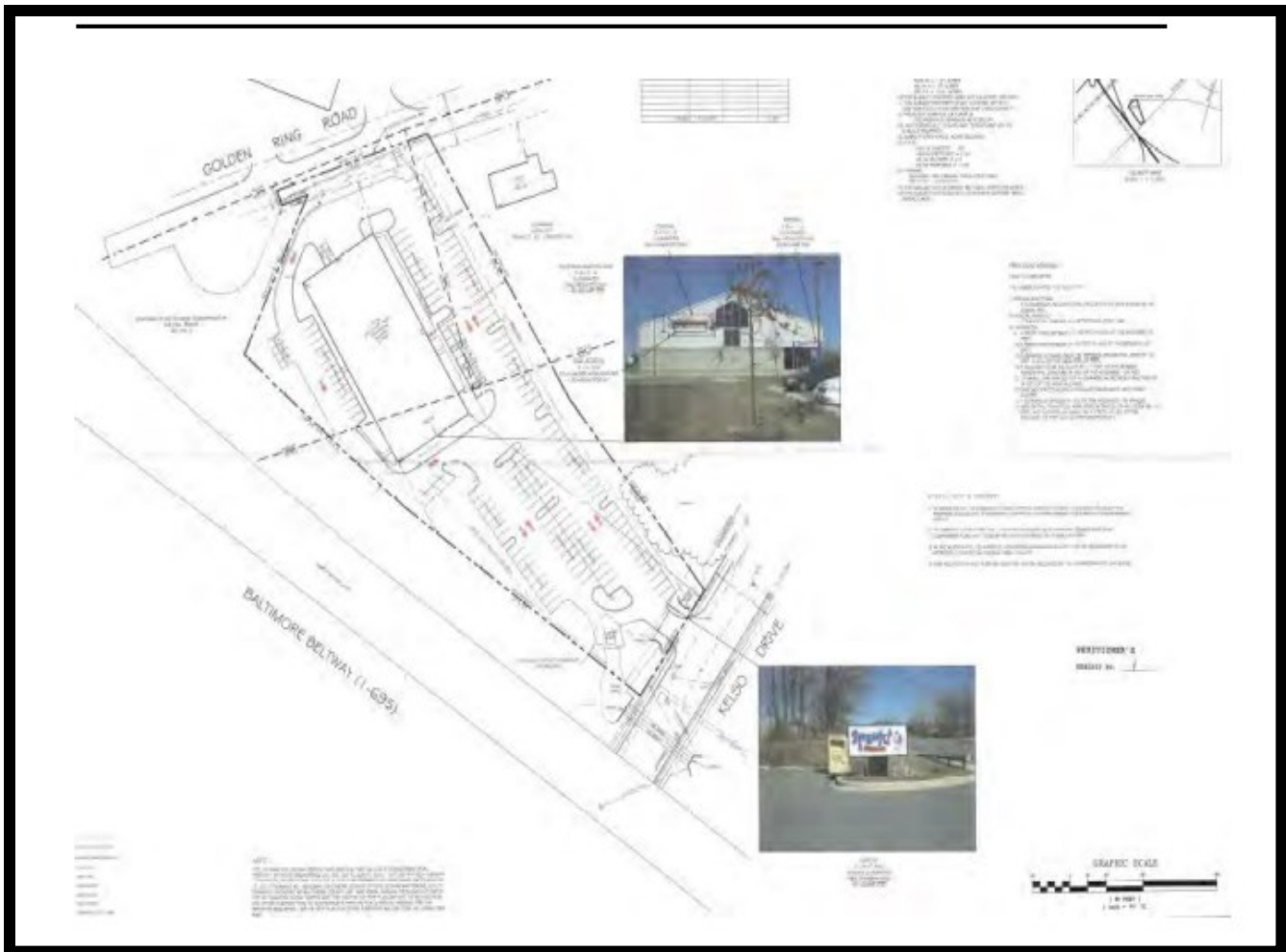


Gold And Company

Commercial Real Estate in the Baltimore Metropolitan Area

8502 Kelso Dr. Essex, MD 21221

Property Layout



Jim Chivers / Will McCullough
Gold And Company, LLC
5601 Newbury St.
Baltimore, MD 21209

410.578.1300 (Office)

www.goldcommercial.net

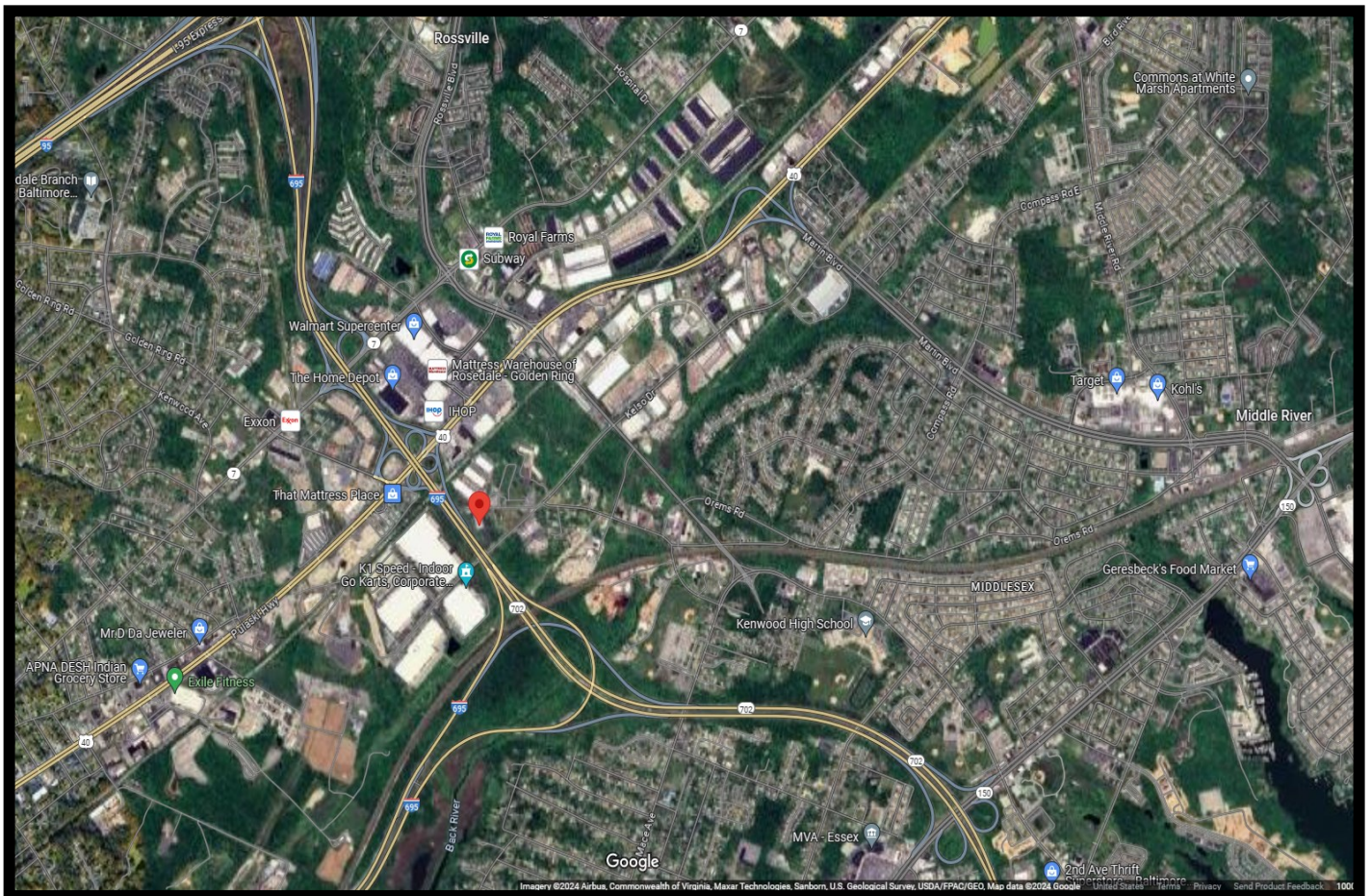


Gold And Company

Commercial Real Estate in the Baltimore Metropolitan Area

8502 Kelso Dr. Essex, MD 21221

Location Map



Jim Chivers / Will McCullough
Gold And Company, LLC
5601 Newbury St.
Baltimore, MD 21209

410.578.1300 (Office)

www.goldcommercial.net