



# **GOLD AND COMPANY, LLC**

**WWW.GOLDCOMMERCIAL.NET**

***Commercial Real Estate in the Baltimore Metropolitan Area***



## **6340 Security Boulevard, Baltimore, MD 21207**

### **Gold And Company, LLC**

**5601 Newbury St.  
Baltimore, MD 21209**

**For More Information:**

**Jim Chivers  
443.928.7522 cell  
jim@goldcommercial.net**

**Alex Simone  
443.845.4413 cell  
Alex@goldcommercial.net**

**Will McCullough, SIOR, CCIM  
410.292.2985 cell  
will@goldcommercial.net**

**www.goldcommercial.net**

- **60,000 Two-Story Office in Woodlawn**
- **Immediate Access to I-695 and I-70**
- **Flexible plans with up to 15,000 sf contiguous**
- **Zoned ML (Commercial)**
- **Ample Parking at 4.5 per 1,000 ratio**
- **Proximity to Social Security & CMS**
- **Ideal for Govt Contractor use**
- **Open Atrium & Direct Access from both floors**
- **Contact For More Information**

This property offering is subject to change without notice. All information is deemed reliable but not guaranteed.



# ***Gold And Company***

***Commercial Real Estate in the Baltimore Metropolitan Area***

**6340 Security Boulevard, Baltimore, MD 21207**

## **Additional Photos**



**Jim Chivers / Will McCullough/Alex Simone**  
**Gold And Company, LLC**  
**5601 Newbury St.**  
**Baltimore, MD 21209**

**410.578.1300 (Office)**

**[www.goldcommercial.net](http://www.goldcommercial.net)**

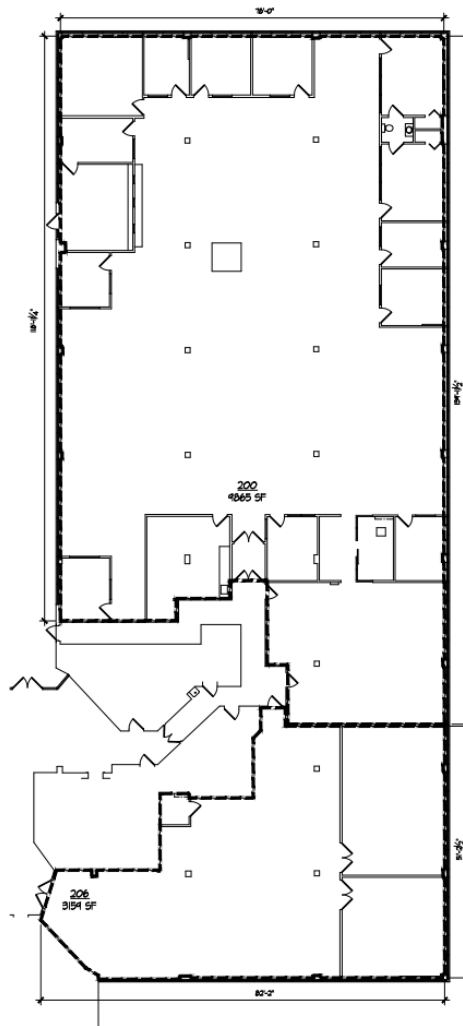


# Gold And Company

Commercial Real Estate in the Baltimore Metropolitan Area

**6340 Security Boulevard, Baltimore, MD 21207**

## Space Plan / Layout



6340  
SECURITY  
Baltimore MD

DATE: 3.6.24  
DRAWING:  
15002  
SCALE:  
1/8" = 1'-0"  
SHEET SIZE:  
11x17

EXISTING  
FLOOR  
PLAN  
200-  
206





# ***Gold And Company***

***Commercial Real Estate in the Baltimore Metropolitan Area***

**6340 Security Boulevard, Baltimore, MD 21207**

## **Birdseye Aerial**



**Jim Chivers / Will McCullough/Alex Simone**  
**Gold And Company, LLC**  
**5601 Newbury St.**  
**Baltimore, MD 21209**

**410.578.1300 (Office)**

**[www.goldcommercial.net](http://www.goldcommercial.net)**

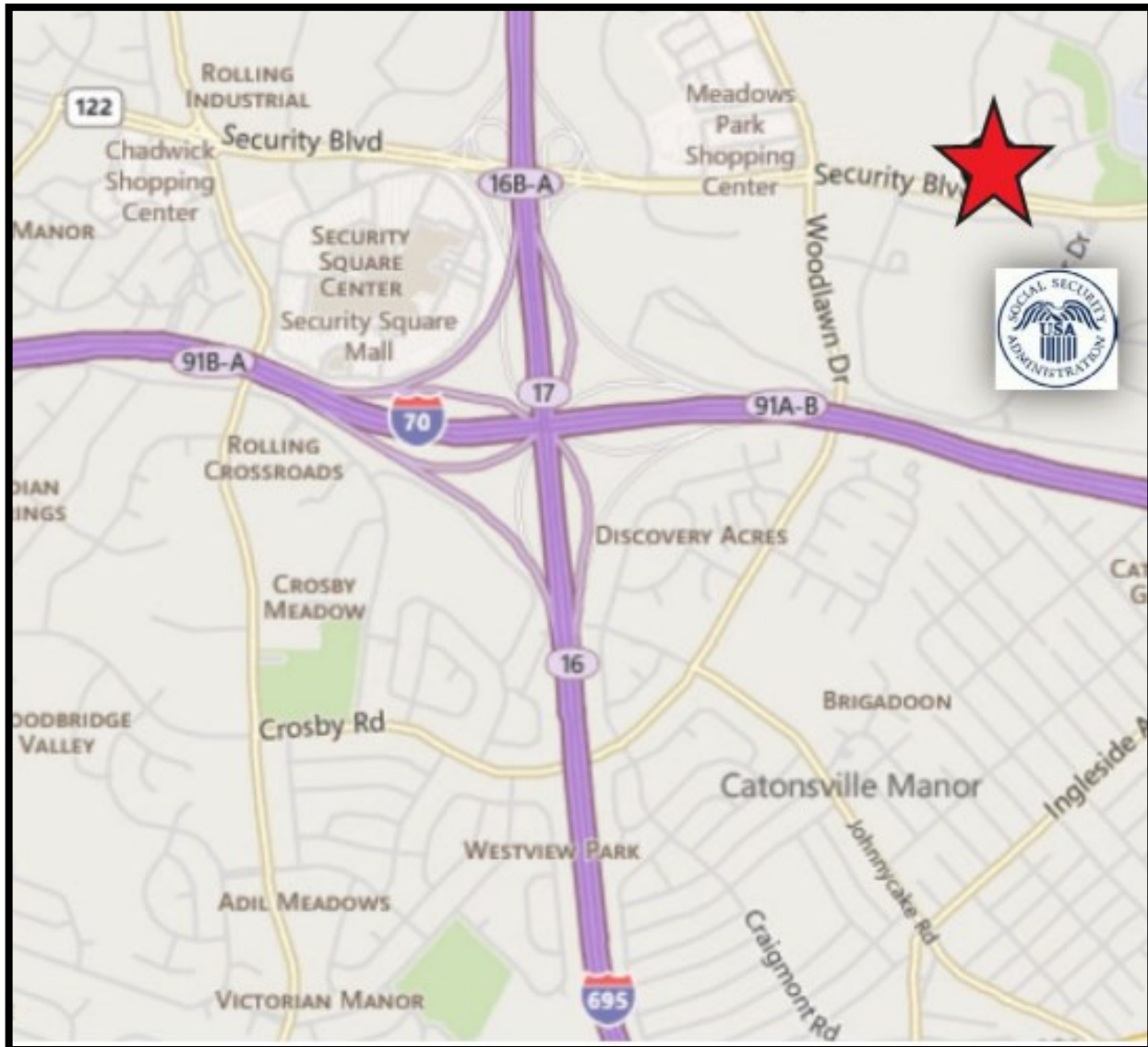


# ***Gold And Company***

***Commercial Real Estate in the Baltimore Metropolitan Area***

**6340 Security Boulevard, Baltimore, MD 21207**

## **Location Map**



**Jim Chivers / Will McCullough/Alex Simone**  
**Gold And Company, LLC**  
**5601 Newbury St.**  
**Baltimore, MD 21209**

**410.578.1300 (Office)**

**[www.goldcommercial.net](http://www.goldcommercial.net)**