



GOLD AND COMPANY, LLC

WWW.GOLDCOMMERCIAL.NET

Commercial Real Estate in the Baltimore Metropolitan Area



5510-5516 Harford Road, Baltimore, MD 21214

Gold And Company, LLC

**5601 Newbury St.
Baltimore, MD 21209**

For More Information:

**Jim Chivers
Sr. Vice President
443.928.7522 cell
jim@goldcommercial.net**

**Will McCullough, SIOR
Vice President
410.292.2985 cell
will@goldcommercial.net**

www.goldcommercial.net

- **Mixed-use Investment Property FOR SALE**
- **Total of 13,540 Sq Ft Retail & Residential**
- **Harford Road Frontage & Visibility**
- **3 Income Producing Tenants Including Brennan's Pub & Lost in the 50's Diner**
- **.78 Acres with both Rear & Street Parking**
- **Zoned C-1 (Retail/Commercial)**
- **Includes 2nd Floor Residential Units**
- **Ideal for Investor or Owner/Occupant**

This property offering is subject to change without notice. All information is deemed reliable but not guaranteed.

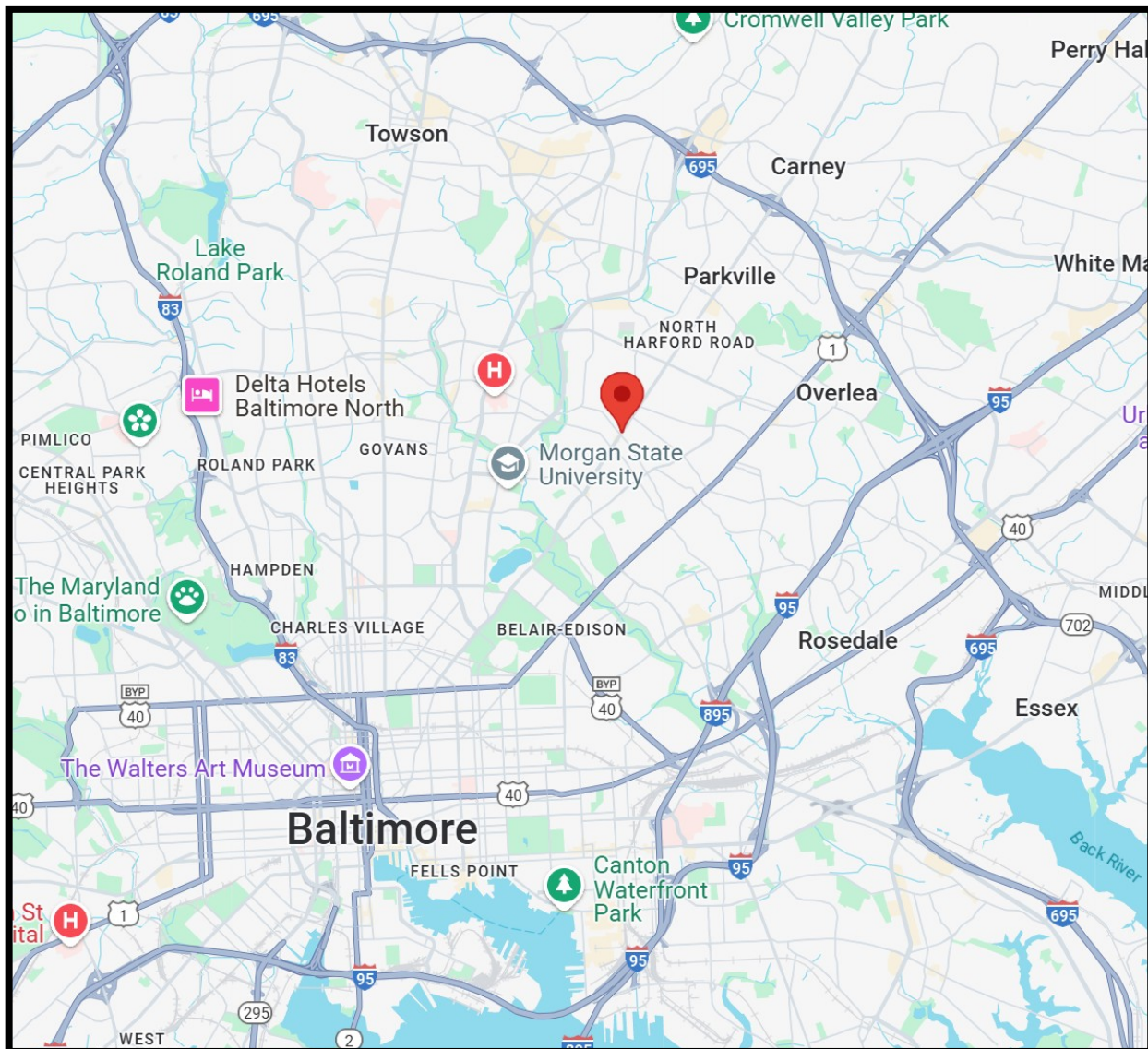


Gold And Company

Commercial Real Estate in the Baltimore Metropolitan Area

5510-5516 Harford Road, Baltimore, MD 21214

Location Map



Jim Chivers / Will McCullough
Gold And Company, LLC
5601 Newbury St.
Baltimore, MD 21209

410.578.1300 (Office)

www.goldcommercial.net

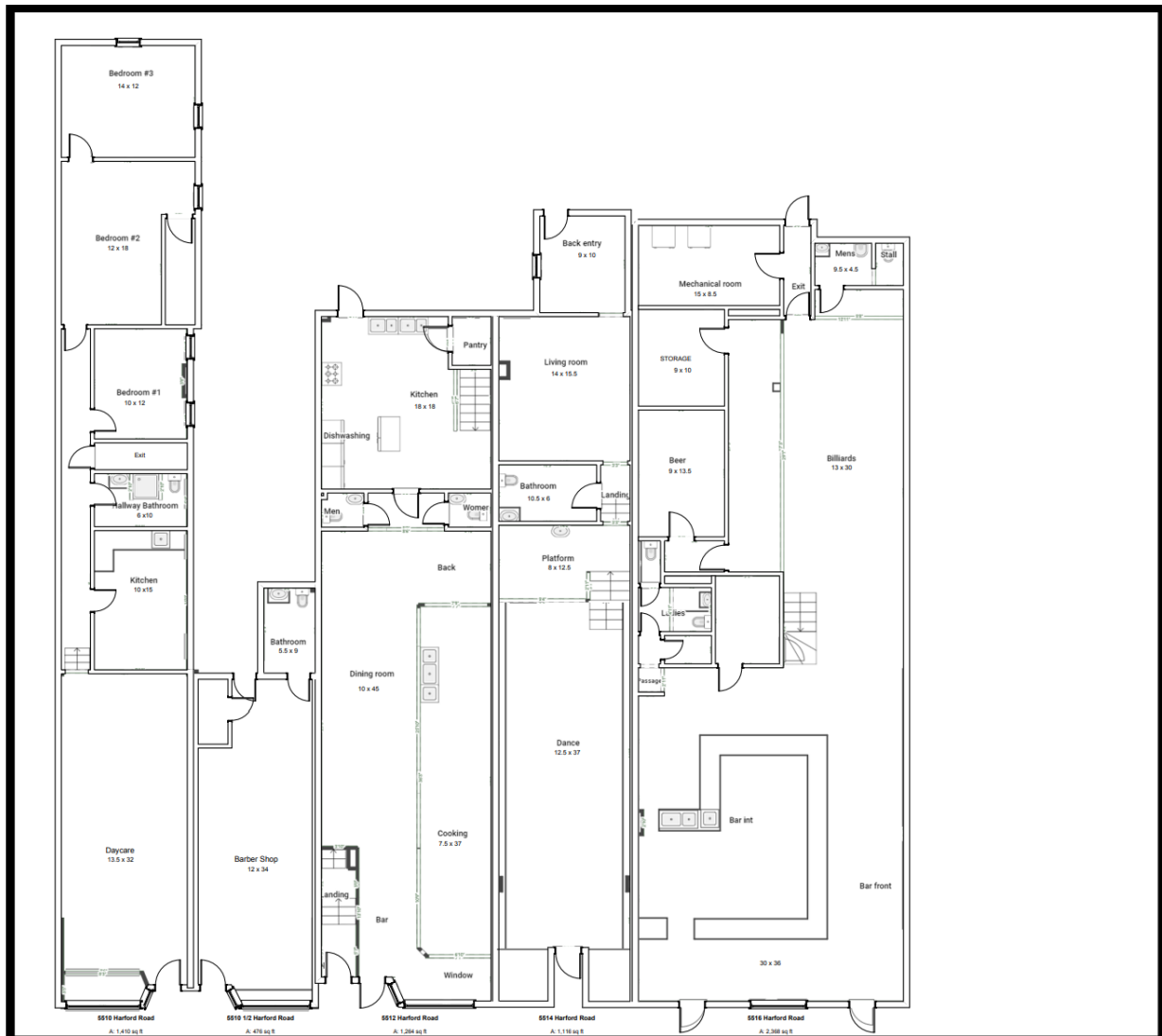


Gold And Company

Commercial Real Estate in the Baltimore Metropolitan Area

5510-5516 Harford Road, Baltimore, MD 21214

Floor Plans– Street Level



Jim Chivers / Will McCullough
Gold And Company, LLC
5601 Newbury St.
Baltimore, MD 21209

410.578.1300 (Office)

www.goldcommercial.net

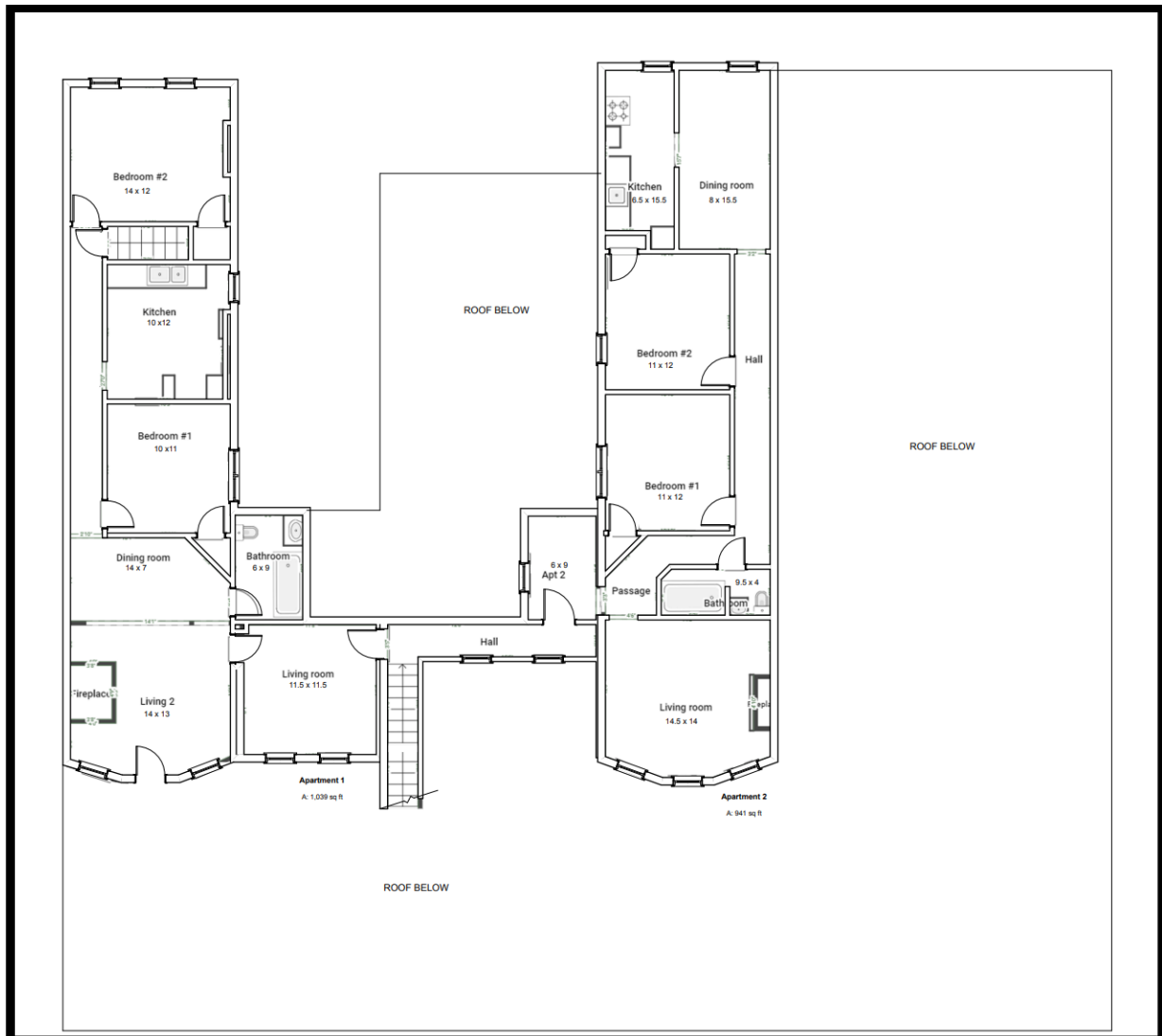


Gold And Company

Commercial Real Estate in the Baltimore Metropolitan Area

5510-5516 Harford Road, Baltimore, MD 21214

Floor Plans- 2nd Level



Jim Chivers / Will McCullough
Gold And Company, LLC
5601 Newbury St.
Baltimore, MD 21209

410.578.1300 (Office)

www.goldcommercial.net

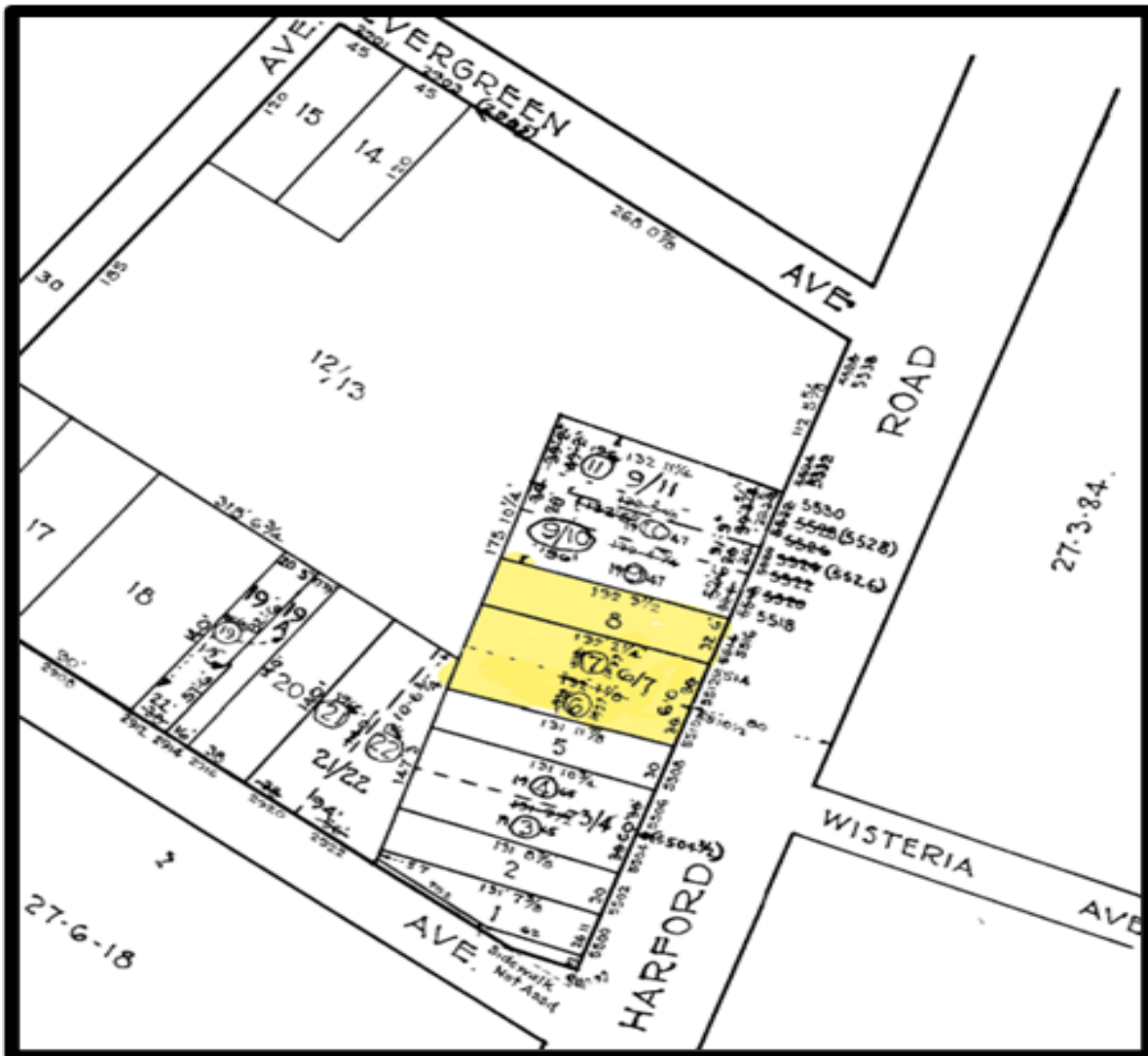


Gold And Company

Commercial Real Estate in the Baltimore Metropolitan Area

5510-5516 Harford Road, Baltimore, MD 21214

Plat Map



Jim Chivers / Will McCullough
Gold And Company, LLC
5601 Newbury St.
Baltimore, MD 21209

410.578.1300 (Office)

www.goldcommercial.net

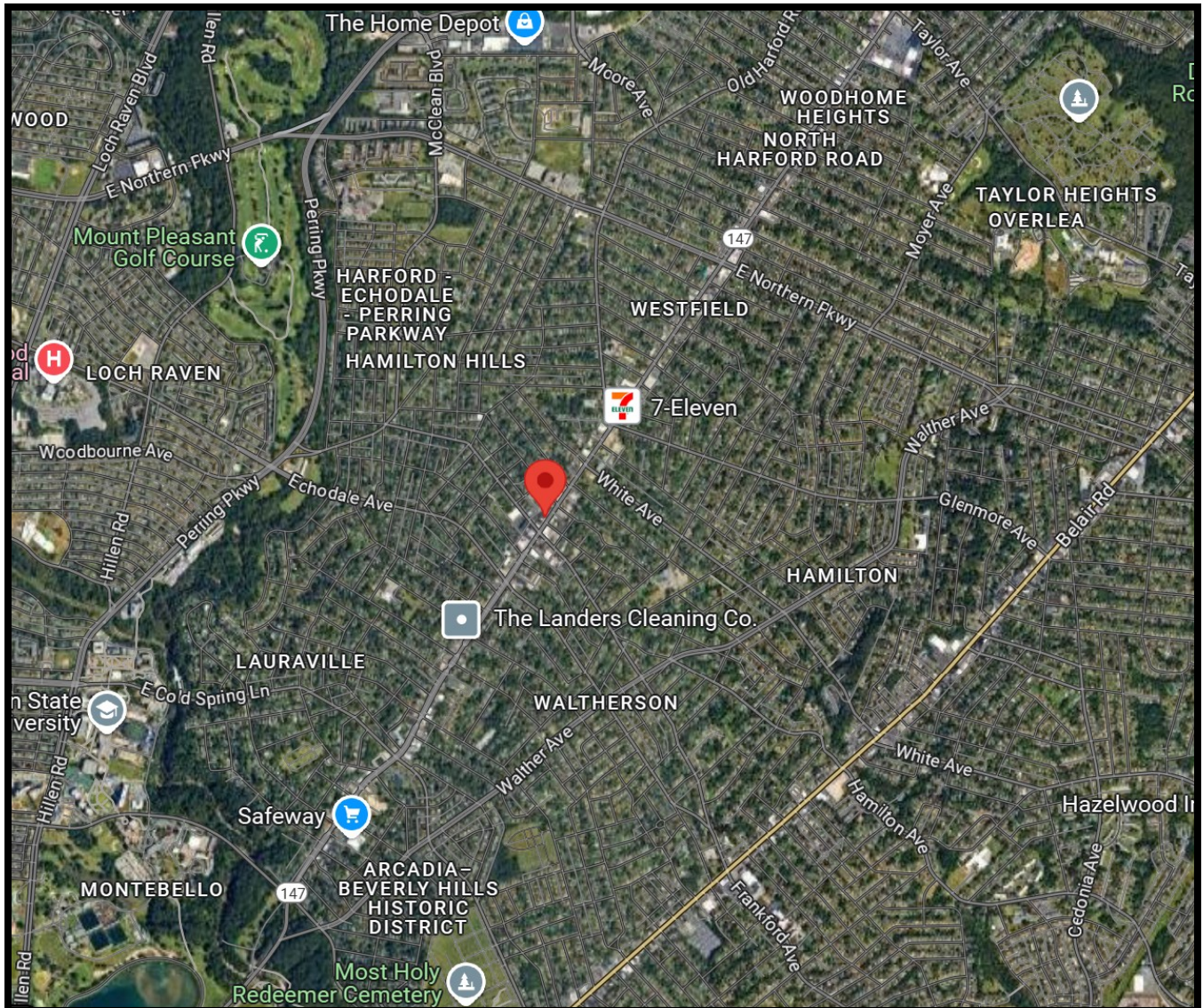


Gold And Company

Commercial Real Estate in the Baltimore Metropolitan Area

5510-5516 Harford Road, Baltimore, MD 21214

Additional Aerial Proximity



Jim Chivers / Will McCullough
Gold And Company, LLC
5601 Newbury St.
Baltimore, MD 21209

410.578.1300 (Office)

www.goldcommercial.net