



GOLD AND COMPANY, LLC

WWW.GOLDCOMMERCIAL.NET

Commercial Real Estate in the Baltimore Metropolitan Area



910 W Pratt Street, Baltimore, MD 21223

Gold And Company, LLC

5601 Newbury St.
Baltimore, MD 21209

For More Information:

Jim Chivers
Sr. Vice President
443.928.7522 cell
jim@goldcommercial.net

Will McCullough, SIOR
Vice President
410.292.2985 cell
will@goldcommercial.net

www.goldcommercial.net

- **3,850 sf Free-Standing Flex/Office FOR SALE**
- **Located in Pigtown/Mt. Clare Submarket**
- **Attractive Office Finishes with Ample Glass**
- **Drive-in Loading**
- **Zoned OR-1 (Office-Residential)**
- **Dedicated Parking Included on Adjacent Lot**
- **Ideal for Contractor, Non-Profit & Govt. Uses**
- **Proximity to Downtown Baltimore and I-95**
- **Contact For More Information**

This property offering is subject to change without notice. All information is deemed reliable but not guaranteed.



Gold And Company

Commercial Real Estate in the Baltimore Metropolitan Area

910 W Pratt Street, Baltimore, MD 21223

Location Map



Jim Chivers / Will McCullough
Gold And Company, LLC
5601 Newbury St.
Baltimore, MD 21209

410.578.1300 (Office)

www.goldcommercial.net

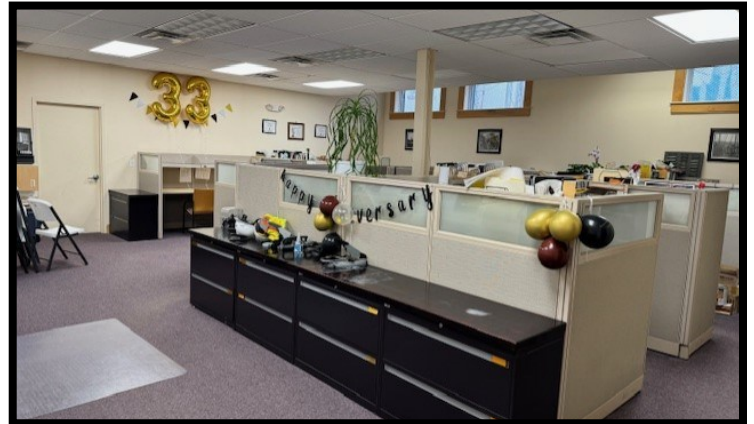


Gold And Company

Commercial Real Estate in the Baltimore Metropolitan Area

910 W Pratt Street, Baltimore, MD 21223

Additional Exterior & Interior Photos



Jim Chivers / Will McCullough
Gold And Company, LLC
5601 Newbury St.
Baltimore, MD 21209

410.578.1300 (Office)

www.goldcommercial.net

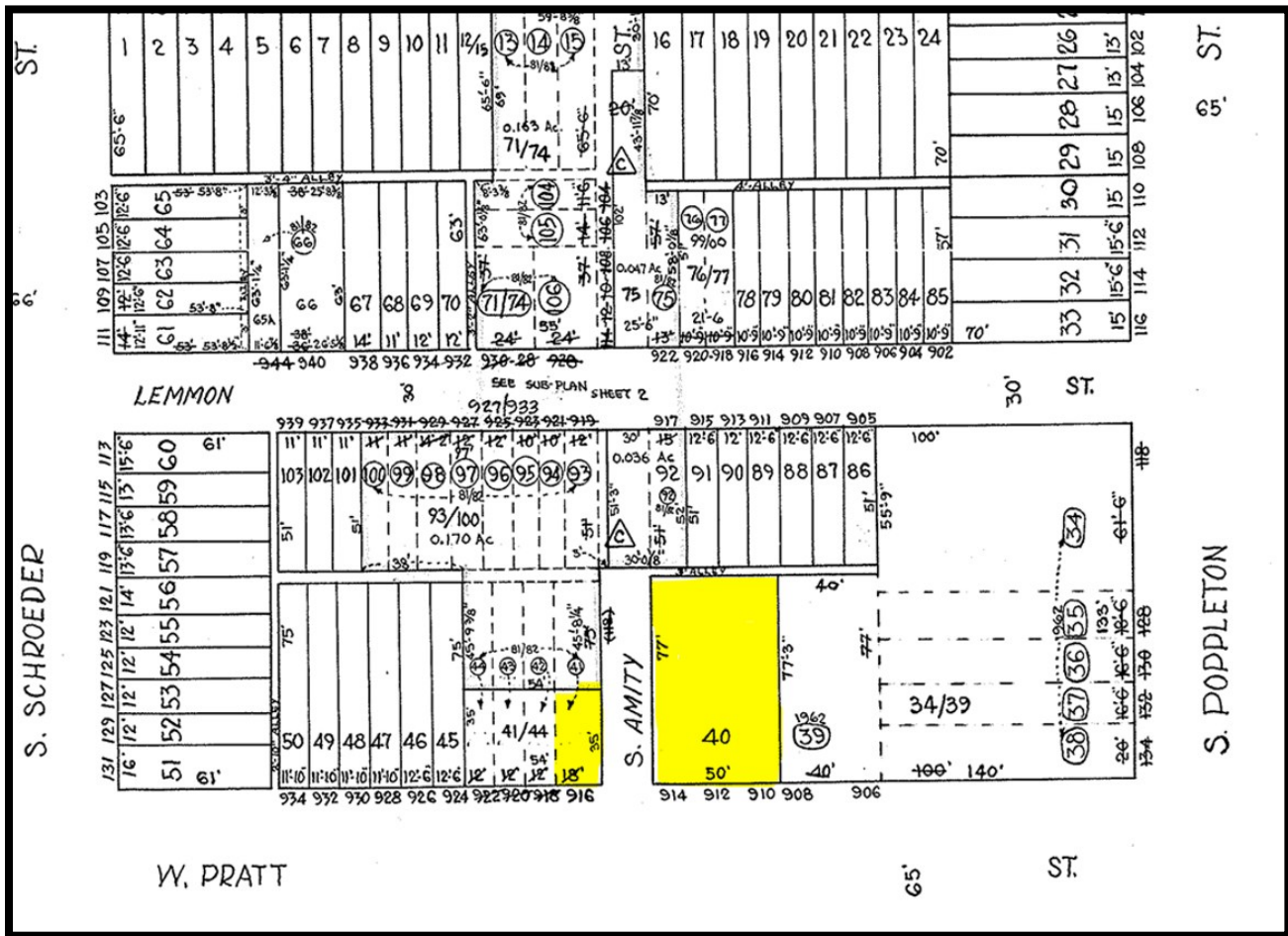


Gold And Company

Commercial Real Estate in the Baltimore Metropolitan Area

910 W Pratt Street, Baltimore, MD 21223

Plat Map



Jim Chivers / Will McCullough
Gold And Company, LLC
5601 Newbury St.
Baltimore, MD 21209

410.578.1300 (Office)
www.goldcommercial.net