



GOLD AND COMPANY, LLC

WWW.GOLDCOMMERCIAL.NET

Commercial Real Estate in the Baltimore Metropolitan Area



300-310 S Conkling St., Baltimore, MD 21224

Gold And Company, LLC

**5601 Newbury St.
Baltimore, MD 21209**

For More Information:

**Jim Chivers
Sr. Vice President
443.928.7522 cell
jim@goldcommercial.net**

**Will McCullough, SIOR
Vice President
410.292.2985 cell
will@goldcommercial.net**

www.goldcommercial.net

- **Commercial Property Available FOR SALE**
- **15,000 sf Two-Story Storage Building**
- **Drive-in Loading Bays**
- **Upper Level Office Space**
- **Zoned R-8 (Residential & Mixed Use)**
- **Dense Population Throughout the Highlandtown, Patterson Park & Canton Neighborhoods**
- **Unique Redevelopment Potential**
- **Tremendous Access I-95—East Baltimore City**
- **Contact For More Information**

This property offering is subject to change without notice. All information is deemed reliable but not guaranteed.

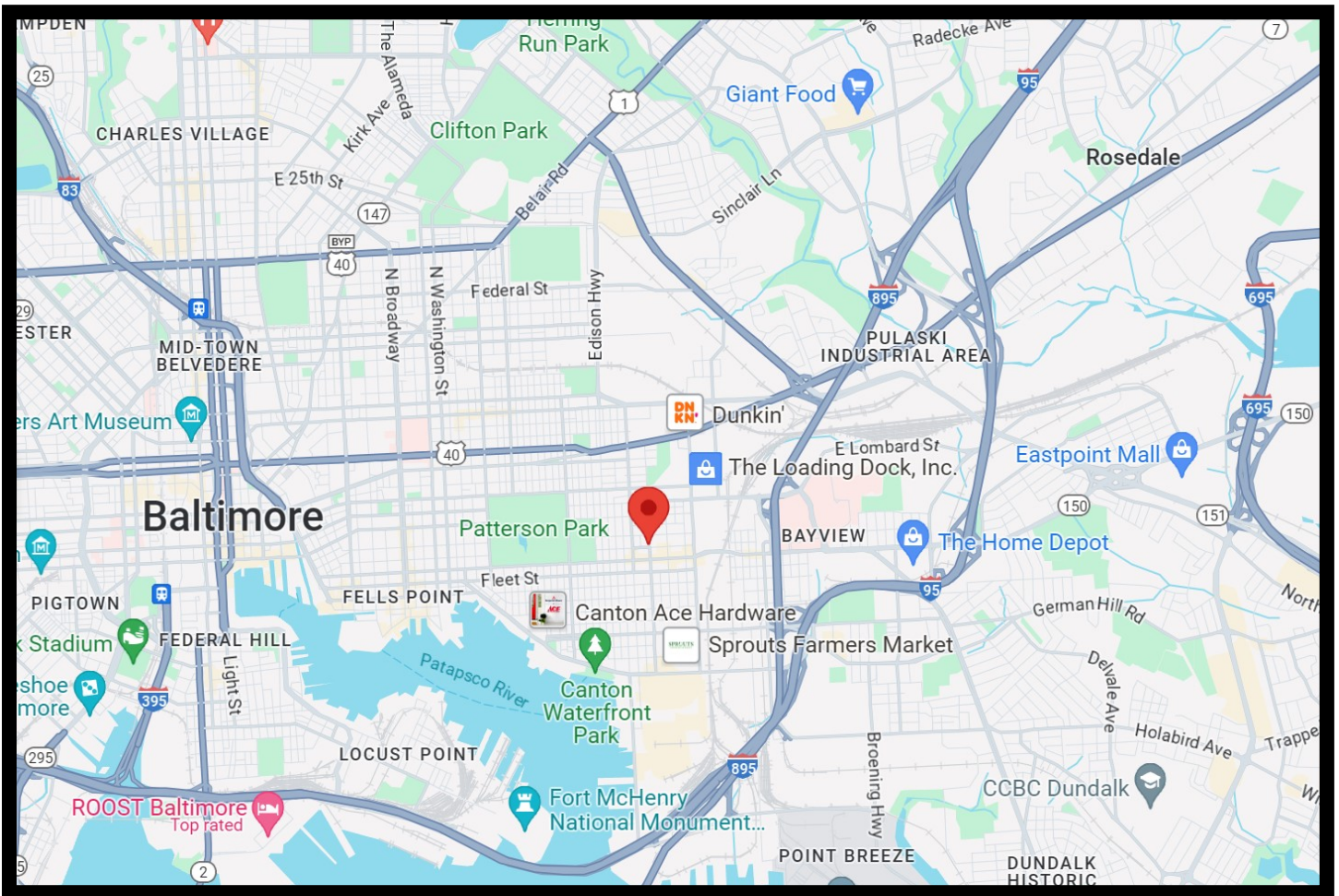


Gold And Company

Commercial Real Estate in the Baltimore Metropolitan Area

300-310 S Conkling St., Baltimore, MD 21224

Location Map



Jim Chivers / Will McCullough
Gold And Company, LLC
5601 Newbury St.
Baltimore, MD 21209

410.578.1300 (Office)

www.goldcommercial.net

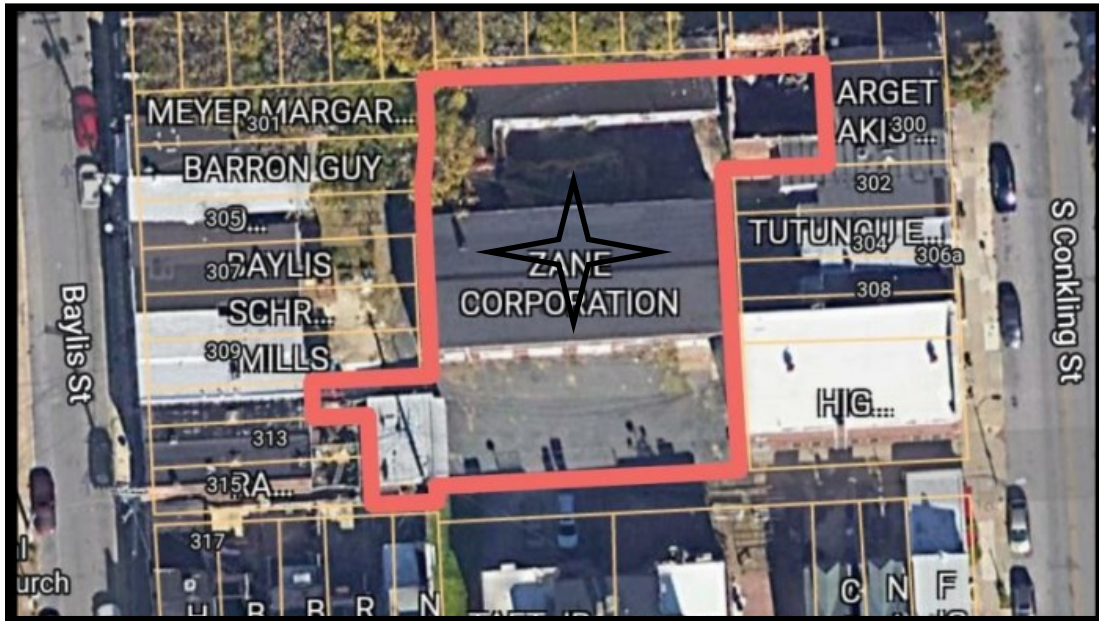


Gold And Company

Commercial Real Estate in the Baltimore Metropolitan Area

300-310 S Conkling St., Baltimore, MD 21224

Additional Aerials & Photos



Jim Chivers / Will McCullough
Gold And Company, LLC
5601 Newbury St.
Baltimore, MD 21209

410.578.1300 (Office)

www.goldcommercial.net

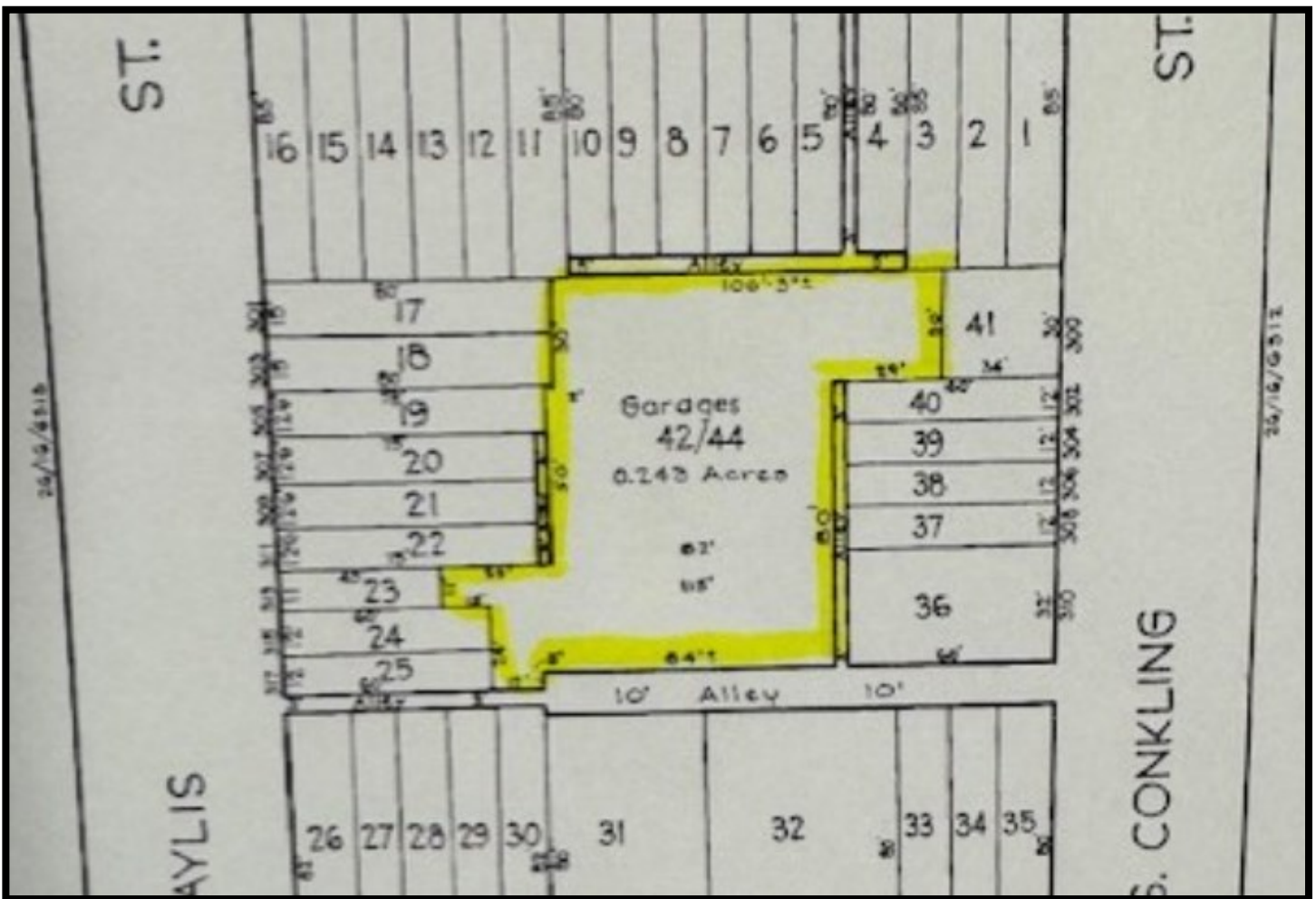


Gold And Company

Commercial Real Estate in the Baltimore Metropolitan Area

300-310 S Conkling St., Baltimore, MD 21224

Block Map



Jim Chivers / Will McCullough
Gold And Company, LLC
5601 Newbury St.
Baltimore, MD 21209

410.578.1300 (Office)

www.goldcommercial.net