



GOLD AND COMPANY, LLC



1509 East Baltimore Street, Baltimore, MD 21231

Gold and Company, LLC

**5601 Newbury St.
Baltimore, MD 21209**

**Alex Simone
443.845.4413
Alex@goldcommercial.net**

**Office: 410.578.1300
www.goldcommercial.net**

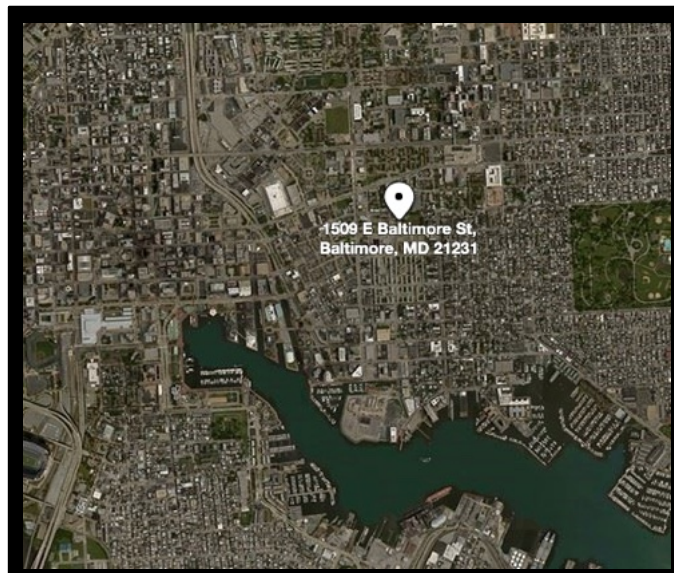
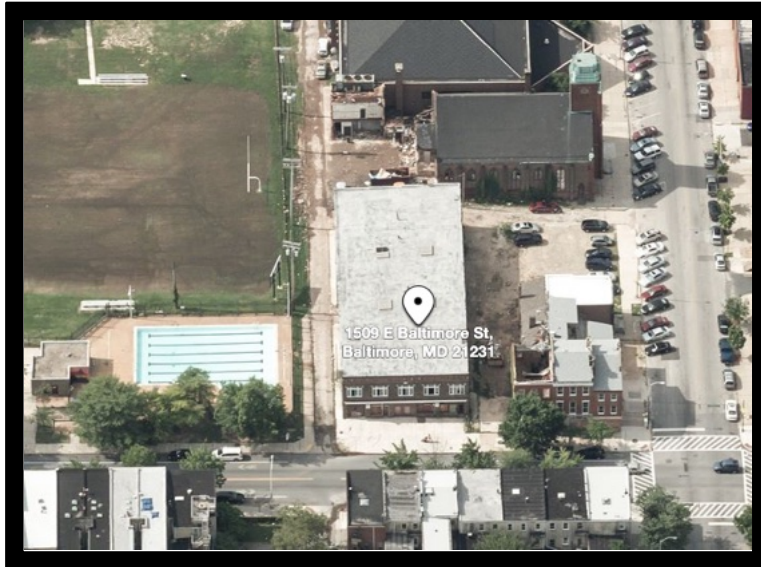
- **1,860 sf +/- Retail-Office Space**
- **FOR LEASE**
- **Corner of East Baltimore and Caroline Streets**
- **R-8 zoning permits office, retail, personal services, and restaurant uses**
- **Former industrial building converted to 15 apartments and 2 commercial units**
- **New hair salon neighbor**
- **Landlord can build to suit**



Gold and Company

Commercial Real Estate in the Baltimore Metropolitan Area

1509 East Baltimore Street, Baltimore, MD 21231



**Alex Simone / Mitch Gold
Gold and Company, LLC
5601 Newbury St.
Baltimore, MD 21209**

**410.578.1300
www.goldcommercial.net**