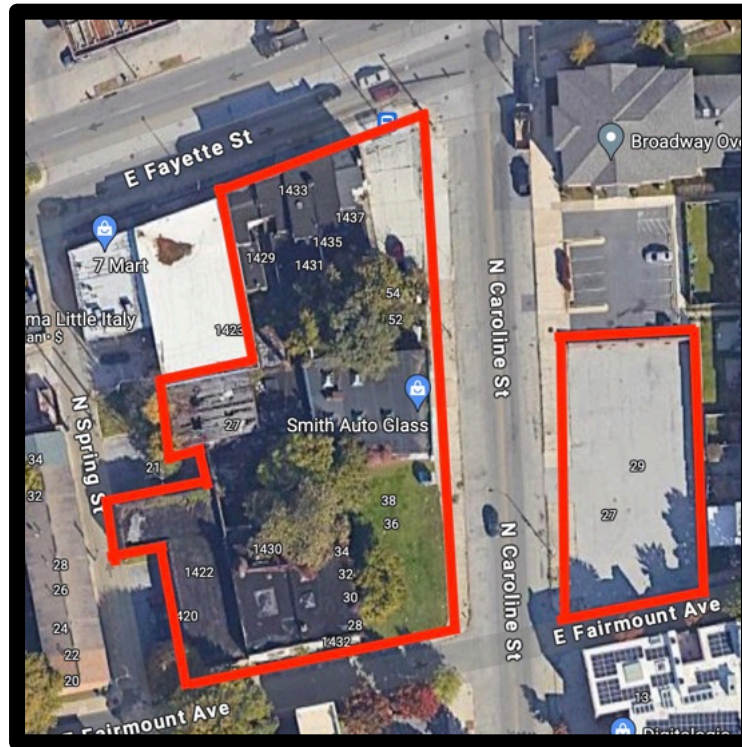




GOLD AND COMPANY, LLC



1441 East Fayette Street, Baltimore, MD 21231

Gold and Company, LLC

**5601 Newbury St.
Baltimore, MD 21209**

Alex Simone
443.845.4413
Alex@goldcommercial.net

Mitch Gold
410.456.2492
Mitch@goldcommercial.net

Office: 410.578.1300
www.goldcommercial.net

- **1441 East Fayette Street**
- **20 total lots FOR SALE**
- **Total of 1.16 acres +/-**
- **C-2 and R-8 Zoning**
- **Enterprise Zone**
- **HUB Zone**
- **Empowerment Zone 2**
- **Opportunity Zone**
- **Within the \$1.2 billion Perkins-Somerset-Oldtown (PSO) redevelopment zone**



Gold and Company

Commercial Real Estate in the Baltimore Metropolitan Area

1441 East Fayette Street, Baltimore, MD 21202



Ideal uses include:

- **Senior Care**
- **Urgent Care**
- **Build up to 110 +/- apartment units**



Alex Simone / Mitch Gold
Gold and Company, LLC
5601 Newbury St.
Baltimore, MD 21209

410.578.1300
www.goldcommercial.net



Gold and Company

Commercial Real Estate in the Baltimore Metropolitan Area

1441 East Fayette Street, Baltimore, MD 21202



Alex Simone / Mitch Gold
Gold and Company, LLC
5601 Newbury St.
Baltimore, MD 21209

410.578.1300
www.goldcommercial.net