



GOLD AND COMPANY, LLC

WWW.GOLDCOMMERCIAL.NET

Commercial Real Estate in the Baltimore Metropolitan Area



3601 Greenway Place- Baltimore, MD 21218

Gold And Company, LLC

**5601 Newbury St.
Baltimore, MD 21209**

For More Information:

**Alex Simone
443.845.4413 cell
Alex@goldcommercial.net**

**Mitch Gold
410.456.2492 cell
Mitch@goldcommercial.net**

**Will McCullough
410.292.2985
Will@goldcommercial.net**

- **2,650 sf Office Condo @ Carrollton Condominium**
- **Available for LEASE or SALE**
- **Lower Level Office with Direct Access**
- **Includes Three (3) Dedicated Parking Spaces**
- **Adjacent to Hopkins Homewood Campus**
- **Proximity to Museum of Art, Medstar Union Hospital & Downtown Baltimore**
- **24-Hour Access with On-Site Property Mngmt**
- **Ideal for Wide Range of Small Business Uses**
- **Contact For More Information**

This property offering is subject to change without notice. All information is deemed reliable but not guaranteed.

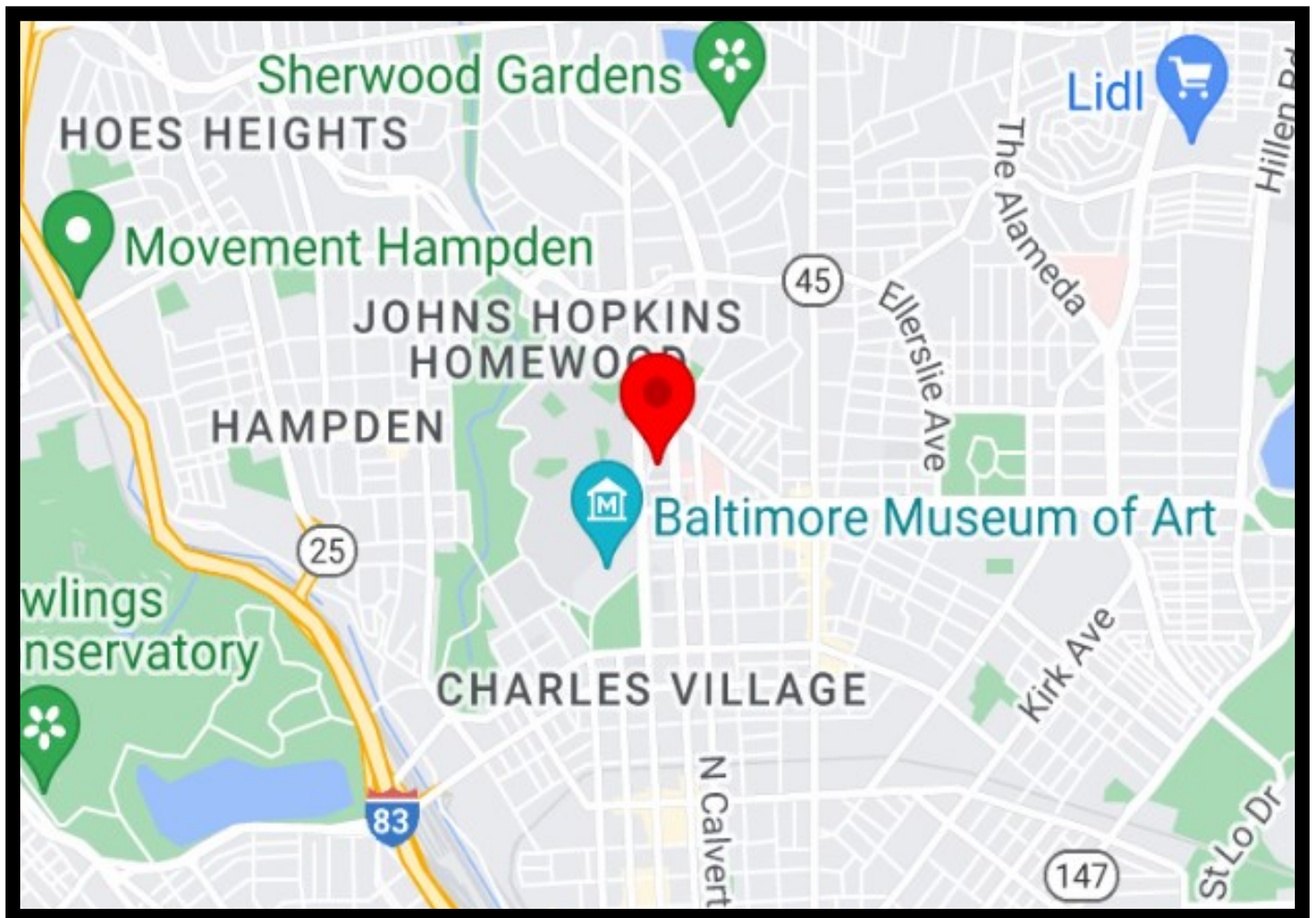


Gold And Company

Commercial Real Estate in the Baltimore Metropolitan Area

3601 Greenway Place, Baltimore, MD 21218

Location Map



**Alex/ Mitch/ Will
Gold And Company, LLC
5601 Newbury St.
Baltimore, MD 21209**

410.578.1300 (Office)

www.goldcommercial.net

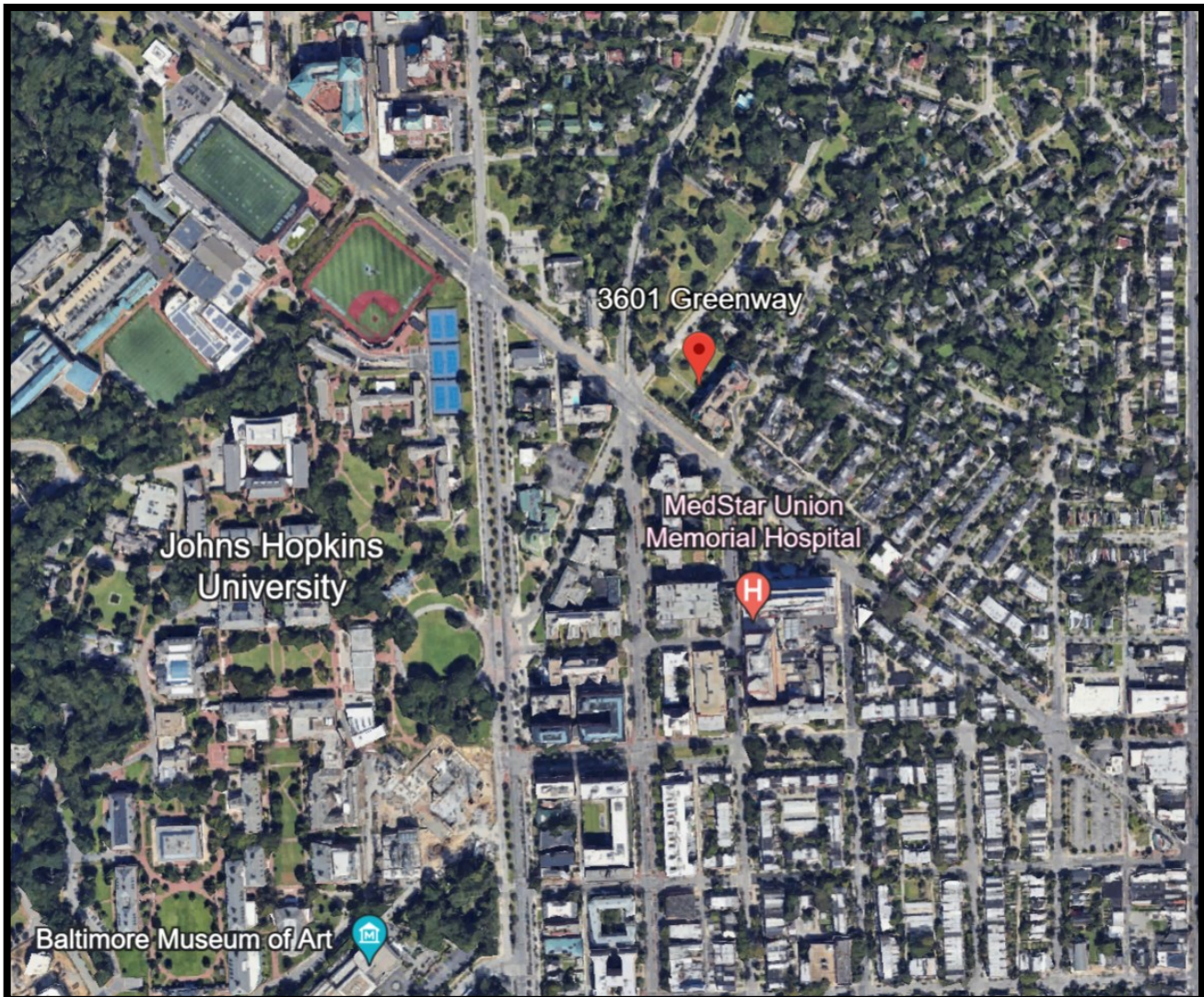


Gold And Company

Commercial Real Estate in the Baltimore Metropolitan Area

3601 Greenway Place, Baltimore, MD 21218

Additional Aerial



**Alex / Mitch/ Will
Gold And Company, LLC
5601 Newbury St.
Baltimore, MD 21209**

410.578.1300 (Office)

www.goldcommercial.net