



# GOLD AND COMPANY, LLC

[WWW.GOLDCOMMERCIAL.NET](http://WWW.GOLDCOMMERCIAL.NET)

*Commercial Real Estate in the Baltimore Metropolitan Area*



**1725 Dundalk Ave. Baltimore, MD 21222**

## Gold And Company, LLC

5601 Newbury St.  
Baltimore, MD 21209

**[For More Information:](#)**

Jim Chivers  
443.928.7522 cell  
jim@goldcommercial.net

Will McCullough  
410.292.2985 cell  
will@goldcommercial.net

[www.goldcommercial.net](http://www.goldcommercial.net)

- +/- 10,000 sf Freestanding Building Available
- One Story Retail Building
- 0.59 Acre
- Excellent Visibility w/ Frontage on Dundalk Ave.
- Shell Condition
- +/- 25 Parking Spaces
- Close Access to I-95 / East Baltimore Submarket
- Contact For More Information

This property offering is subject to change without notice. All information is deemed reliable but not guaranteed.



# **Gold And Company**

**Commercial Real Estate in the Baltimore Metropolitan Area**

**1725 Dundalk Ave. Baltimore, MD 21222**

**Aerial**



**Jim Chivers / Will McCullough**  
**Gold And Company, LLC**  
**5601 Newbury St.**  
**Baltimore, MD 21209**

**410.578.1300 (Office)**

**[www.goldcommercial.net](http://www.goldcommercial.net)**



# **Gold And Company**

**Commercial Real Estate in the Baltimore Metropolitan Area**

**1725 Dundalk Ave. Baltimore, MD 21222**

## **Interior Pictures**



**Jim Chivers / Will McCullough**  
**Gold And Company, LLC**  
**5601 Newbury St.**  
**Baltimore, MD 21209**

**410.578.1300 (Office)**

**[www.goldcommercial.net](http://www.goldcommercial.net)**

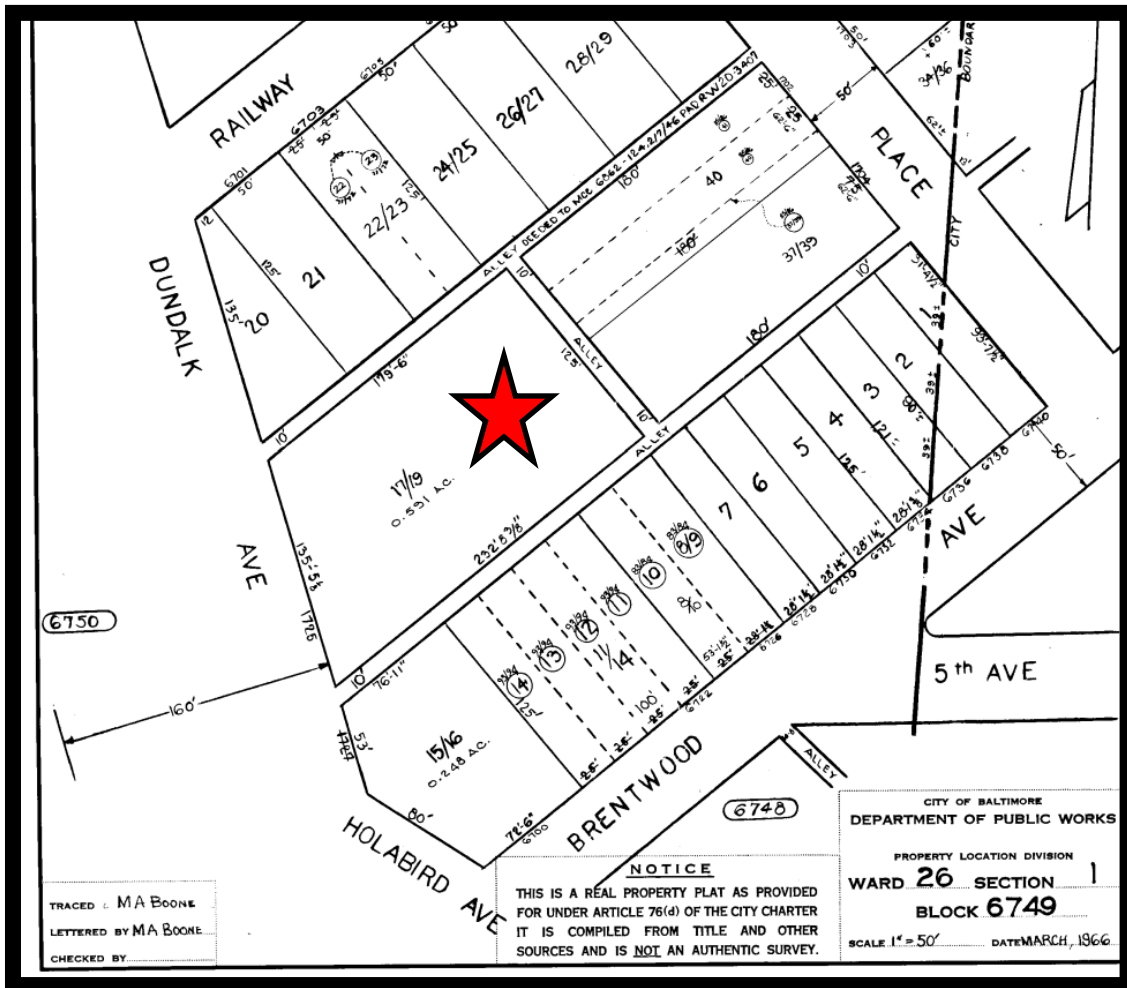


# Gold And Company

Commercial Real Estate in the Baltimore Metropolitan Area

**1725 Dundalk Ave. Baltimore, MD 21222**

## Block Map



**Jim Chivers / Will McCullough**  
**Gold And Company, LLC**  
**5601 Newbury St.**  
**Baltimore, MD 21209**

**410.578.1300 (Office)**

[www.goldcommercial.net](http://www.goldcommercial.net)