



GOLD AND COMPANY, LLC

WWW.GOLDCOMMERCIAL.NET

Commercial Real Estate in the Baltimore Metropolitan Area



11235-11239 Philadelphia Rd. White Marsh, MD 21162

Gold And Company, LLC

For More Information:

Jim Chivers
443.928.7522 cell
jim@goldcommercial.net

Will McCullough
410.292.2985 cell
will@goldcommercial.net

www.goldcommercial.net

- **32.3 Total Gross Acres Available FOR SALE or LEASE**
- **+/- 10+ Acres Cleared and Useable**
- **Heavy Industrial Zoning— Baltimore County**
- **East Baltimore County Industrial Submarket**
- **Five Minute Drive to I-95**
- **Ideal for Auto Dismantling, Recycling, Contractors, Etc**
- **Isolated and Sheltered Yard**
- **Attractive for Heavy Industrial Outdoor Storage Uses**
- **Potential Development**
- **Owned and Managed by Triten**



This property offering is subject to change without notice. All information is deemed reliable but not guaranteed.



Gold And Company

Commercial Real Estate in the Baltimore Metropolitan Area

11235-11239 Philadelphia Rd. White Marsh, MD

Property Layout



Jim Chivers / Will McCullough
Gold And Company, LLC
5601 Newbury St.
Baltimore, MD 21209

410.578.1300 (Office)

www.goldcommercial.net

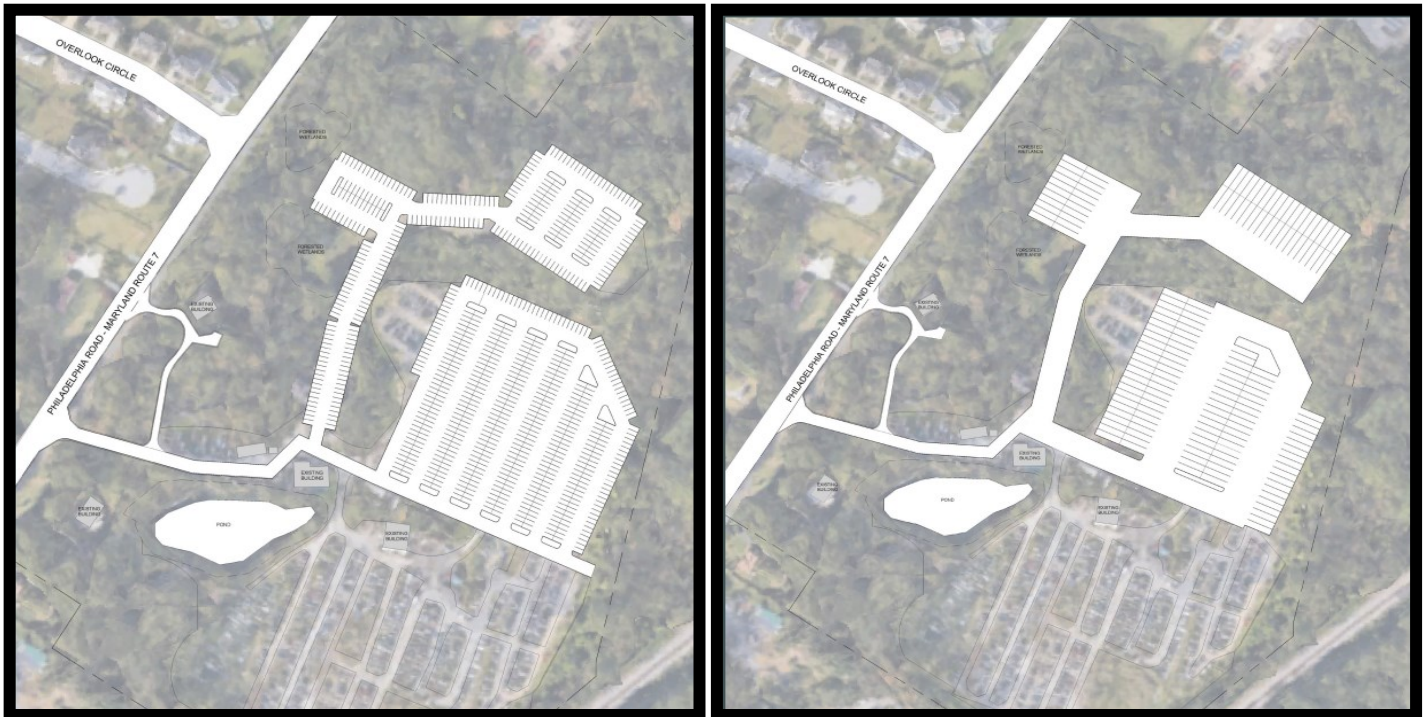


Gold And Company

Commercial Real Estate in the Baltimore Metropolitan Area

11235-11239 Philadelphia Rd. White Marsh, MD

Car Parking or Trailer / Container Layout



Conceptual Parking Layouts

Jim Chivers / Will McCullough
Gold And Company, LLC
5601 Newbury St.
Baltimore, MD 21209

410.578.1300 (Office)

www.goldcommercial.net



Gold And Company

Commercial Real Estate in the Baltimore Metropolitan Area

11235-11239 Philadelphia Rd. White Marsh, MD

Distance to Main Interstates



Jim Chivers / Will McCullough
Gold And Company, LLC
5601 Newbury St.
Baltimore, MD 21209

410.578.1300 (Office)

www.goldcommercial.net



Gold And Company

Commercial Real Estate in the Baltimore Metropolitan Area

11235-11239 Philadelphia Rd. White Marsh, MD

Proximity to the Port of Baltimore



Jim Chivers / Will McCullough
Gold And Company, LLC
5601 Newbury St.
Baltimore, MD 21209

410.578.1300 (Office)

www.goldcommercial.net