



GOLD AND COMPANY, LLC

WWW.GOLDCOMMERCIAL.NET

Commercial Real Estate in the Baltimore Metropolitan Area



1001 S. Dukeland Street, Baltimore, MD 21223

Gold And Company, LLC

**5601 Newbury St.
Baltimore, MD 21209**

For More Information:

**Jim Chivers
Sr. Vice President
443.928.7522 cell
jim@goldcommercial.net**

**Will McCullough
Vice President
410.292.2985 cell
will@goldcommercial.net**

www.goldcommercial.net

- **Immediate Access to I-95 and the Beltway**
- **3.3 Acre Industrial Property FOR SALE**
- **Zoned I-1 (Light Industrial District)**
- **Fully Fenced, Paved and Lit Parking Lot**
- **Existing Office Trailer**
- **Ideal for Trailer or Equipment Storage**
- **Proximity to Downtown Baltimore & BWI**
- **Located next to Desoto Business Park**
- **Contact For More Information**

This property offering is subject to change without notice. All information is deemed reliable but not guaranteed.

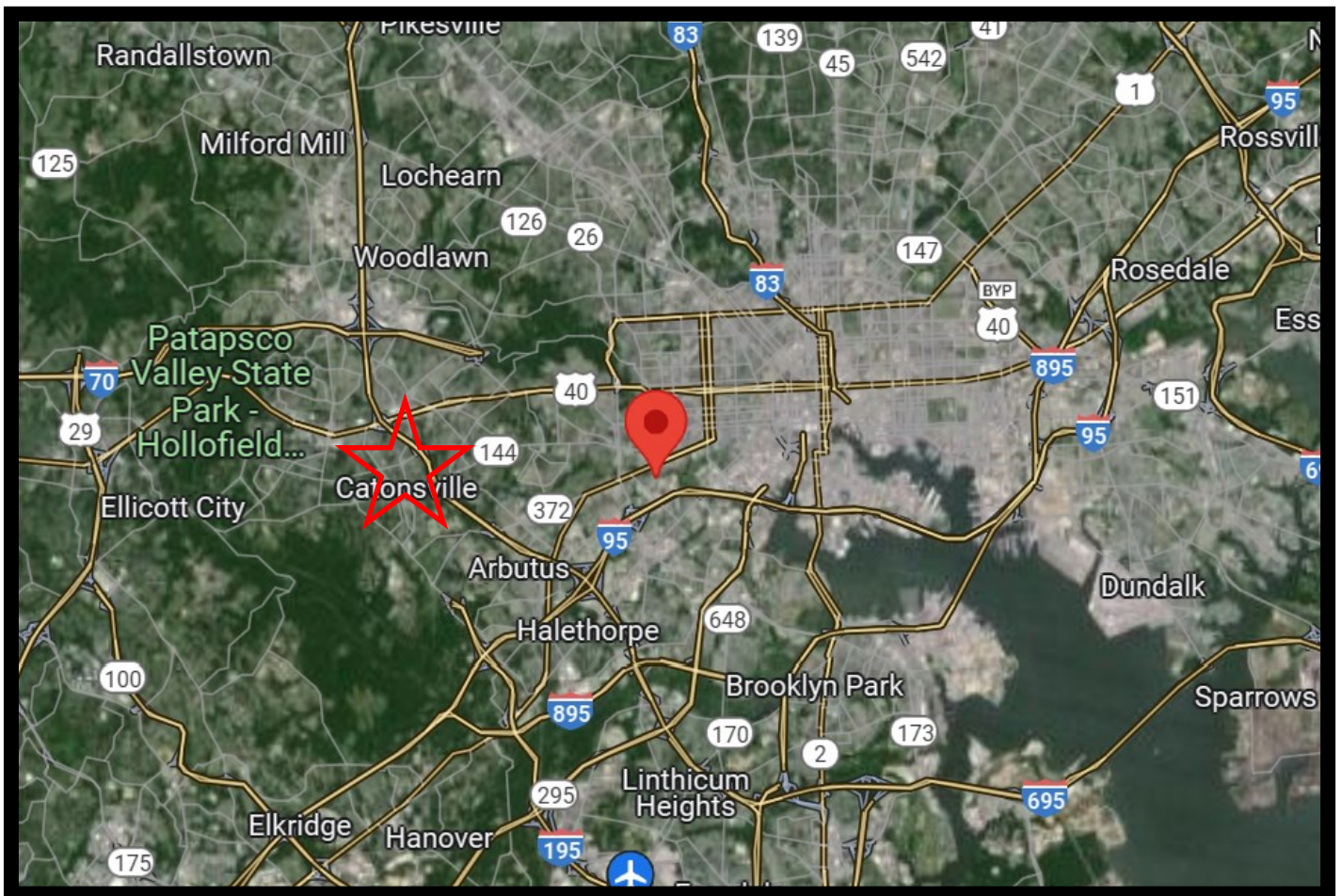


Gold And Company

Commercial Real Estate in the Baltimore Metropolitan Area

1001 S. Dukeland Street, Baltimore, MD 21223

Aerial Map



Jim Chivers / Will McCullough
Gold And Company, LLC
5601 Newbury St.
Baltimore, MD 21209

410.578.1300 (Office)

www.goldcommercial.net



Gold And Company

Commercial Real Estate in the Baltimore Metropolitan Area

1001 S. Dukeland Street, Baltimore, MD 21223

Additional Aerials & Photos



Jim Chivers / Will McCullough
Gold And Company, LLC
5601 Newbury St.
Baltimore, MD 21209

410.578.1300 (Office)

www.goldcommercial.net

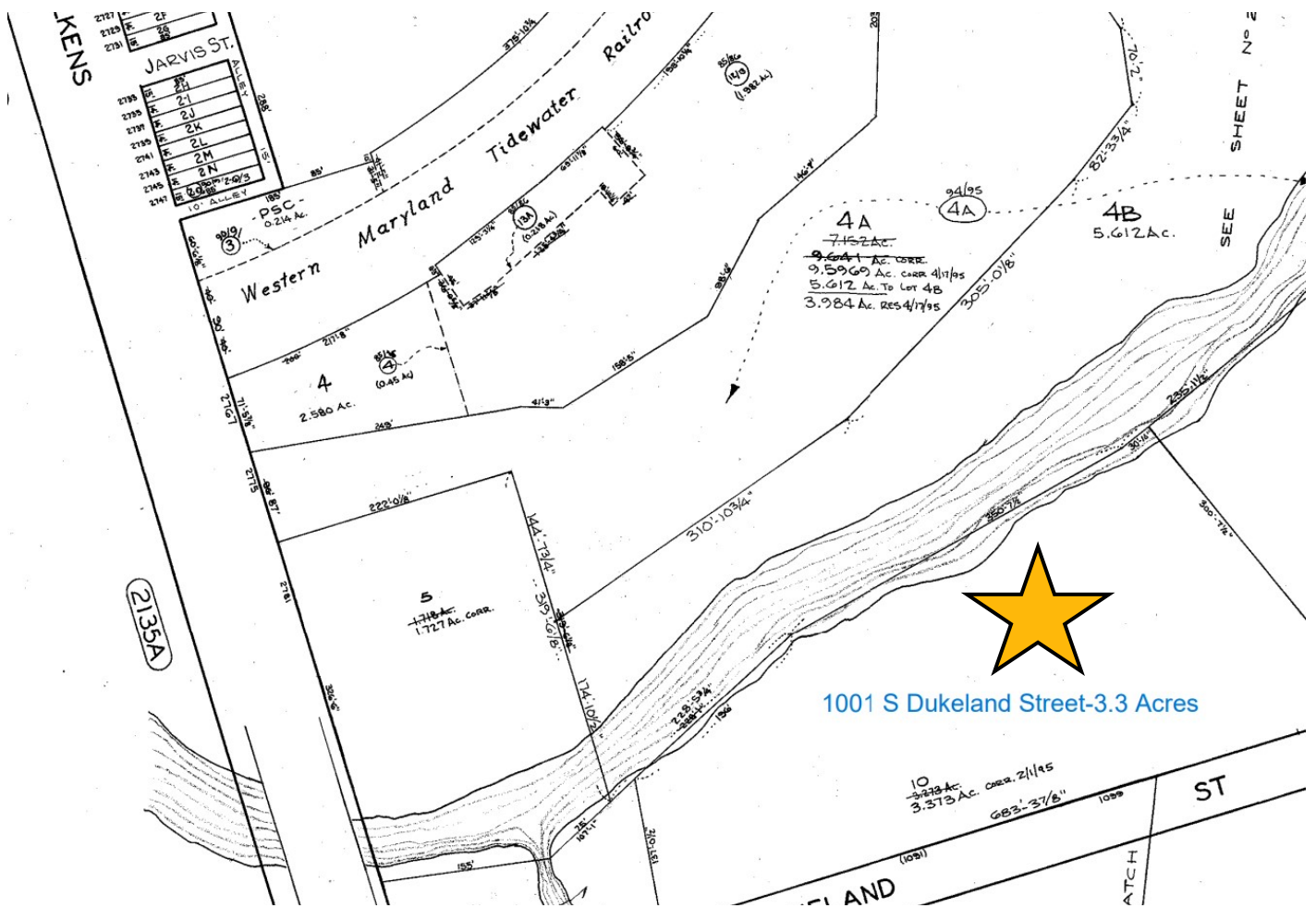


Gold And Company

Commercial Real Estate in the Baltimore Metropolitan Area

1001 S. Dukeland Street, Baltimore, MD 21223

Block Map



Jim Chivers / Will McCullough
Gold And Company, LLC
5601 Newbury St.
Baltimore, MD 21209

410.578.1300 (Office)

www.goldcommercial.net