



GOLD AND COMPANY, LLC

WWW.GOLDCOMMERCIAL.NET

Commercial Real Estate in the Baltimore Metropolitan Area



6600 Holabird Avenue, Baltimore, MD 21224

Gold And Company, LLC

**5601 Newbury St.
Baltimore, MD 21209**

For More Information:

**Jim Chivers
Sr. Vice President
443.928.7522 cell
jim@goldcommercial.net**

**Will McCullough, SIOR
Vice President
410.292.2985 cell
will@goldcommercial.net**

www.goldcommercial.net

- **5,000 sf Free-Standing Building in Dundalk**
- **Available Immediately For SALE or LEASE**
- **Excellent Visibility Along Holabird Avenue**
- **Drive-in Bays**
- **Zoned C-3 (Heavy Industrial)**
- **1/3 Acre- Paved & Fenced Lot**
- **Ideal for Automotive or Contractor Use**
- **Proximity to I-95 and Downtown Baltimore**
- **Contact For More Information**

This property offering is subject to change without notice. All information is deemed reliable but not guaranteed.

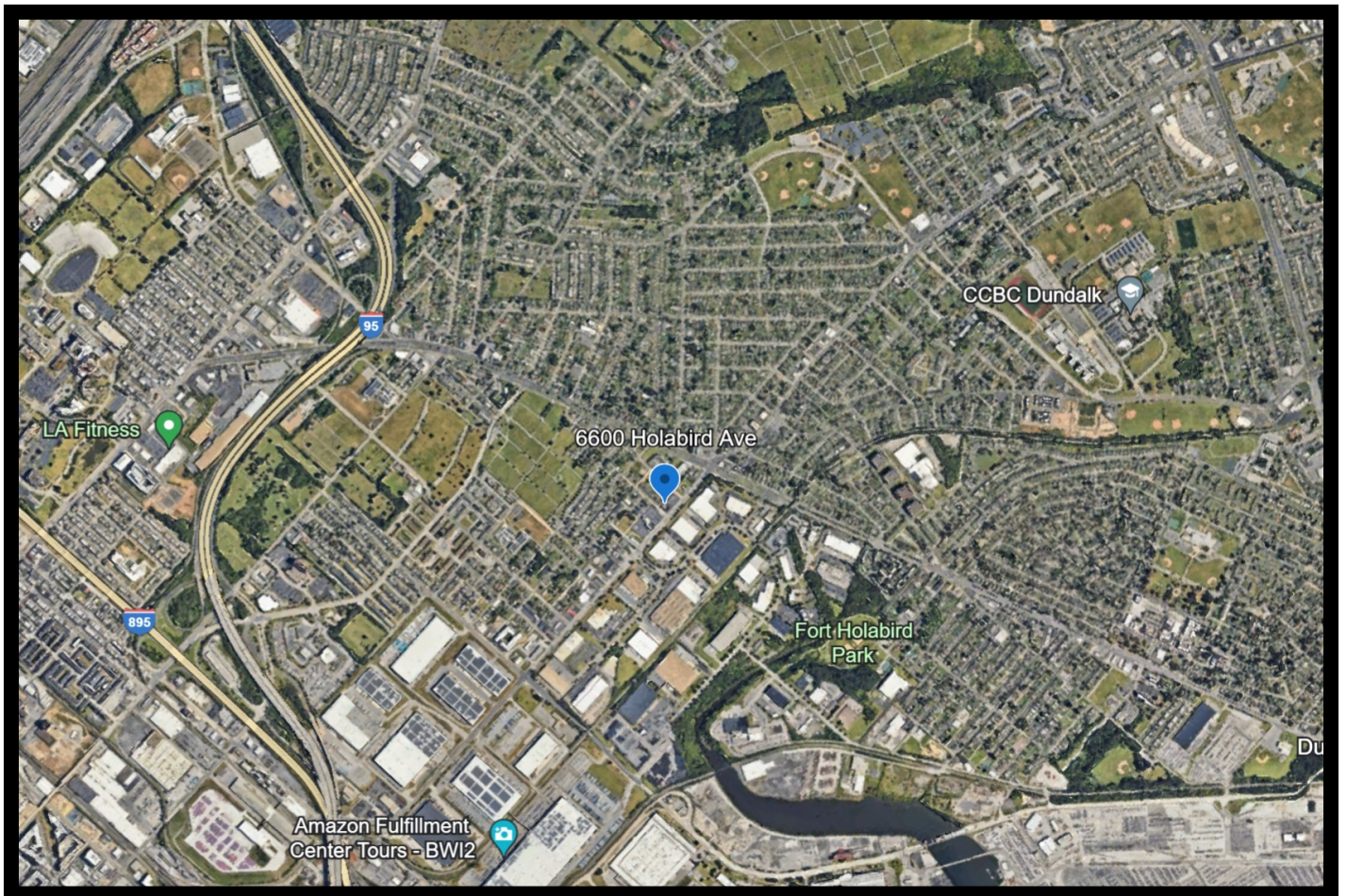


Gold And Company

Commercial Real Estate in the Baltimore Metropolitan Area

6600 Holabird Avenue, Baltimore, MD 21224

Location Map



Jim Chivers / Will McCullough
Gold And Company, LLC
5601 Newbury St.
Baltimore, MD 21209

410.578.1300 (Office)

www.goldcommercial.net

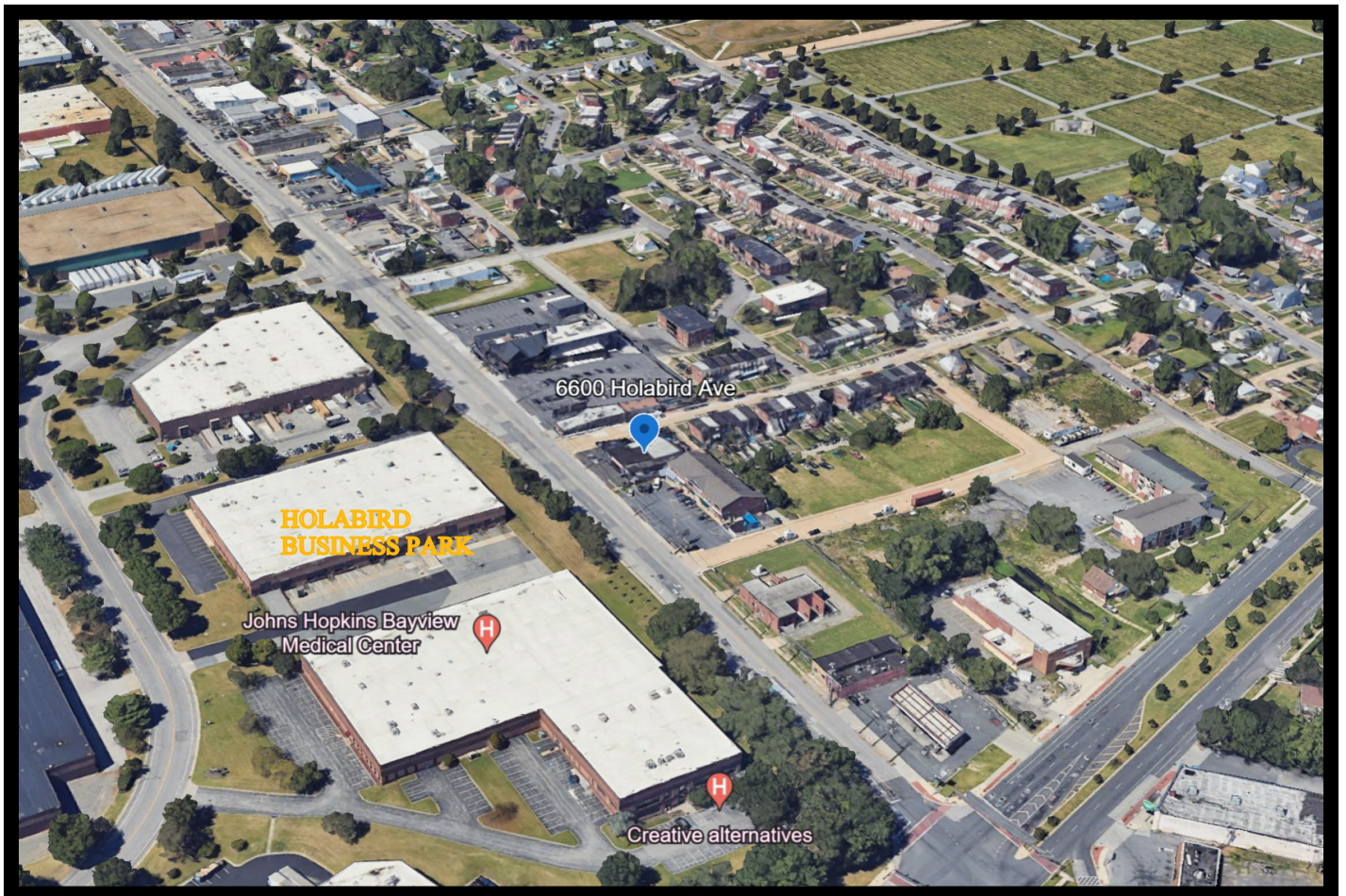


Gold And Company

Commercial Real Estate in the Baltimore Metropolitan Area

6600 Holabird Avenue, Baltimore, MD 21224

Additional Wide Aerial



Jim Chivers / Will McCullough
Gold And Company, LLC
5601 Newbury St.
Baltimore, MD 21209

410.578.1300 (Office)

www.goldcommercial.net

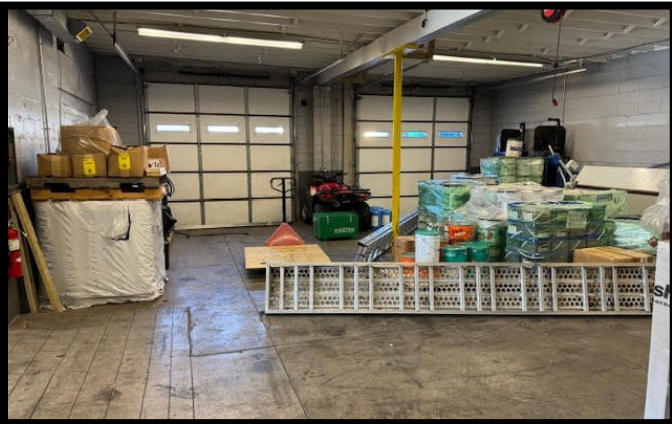


Gold And Company

Commercial Real Estate in the Baltimore Metropolitan Area

6600 Holabird Avenue, Baltimore, MD 21224

Additional Exterior & Interior Photos



Jim Chivers / Will McCullough
Gold And Company, LLC
5601 Newbury St.
Baltimore, MD 21209

410.578.1300 (Office)

www.goldcommercial.net