



# **GOLD AND COMPANY, LLC**

**WWW.GOLDCOMMERCIAL.NET**

***Commercial Real Estate in the Baltimore Metropolitan Area***



**2107 Maisel St. Baltimore, MD 21230**

## **Gold And Company, LLC**

**5601 Newbury St.  
Baltimore, MD 21209**

***For More Information:***

**Jim Chivers  
443.928.7522 cell  
jim@goldcommercial.net**

**Will McCullough  
410.292.2985 cell  
will@goldcommercial.net**

**www.goldcommercial.net**

- **Industrial Property FOR SALE**
- **+/- 7,400 sf Industrial Building**
- **0.53 Acres—Fenced Lot**
- **I-2 Industrial Zoning—Heavy Industrial**
- **Heavy Power—3 phase, 1200 Amps**
- **Dock Platform**
- **Easy Access to the City, I-295, I-95, and I-695**
- **Offices Recently Renovated**
- **Contact For More Information**

This property offering is subject to change without notice. All information is deemed reliable but not guaranteed.

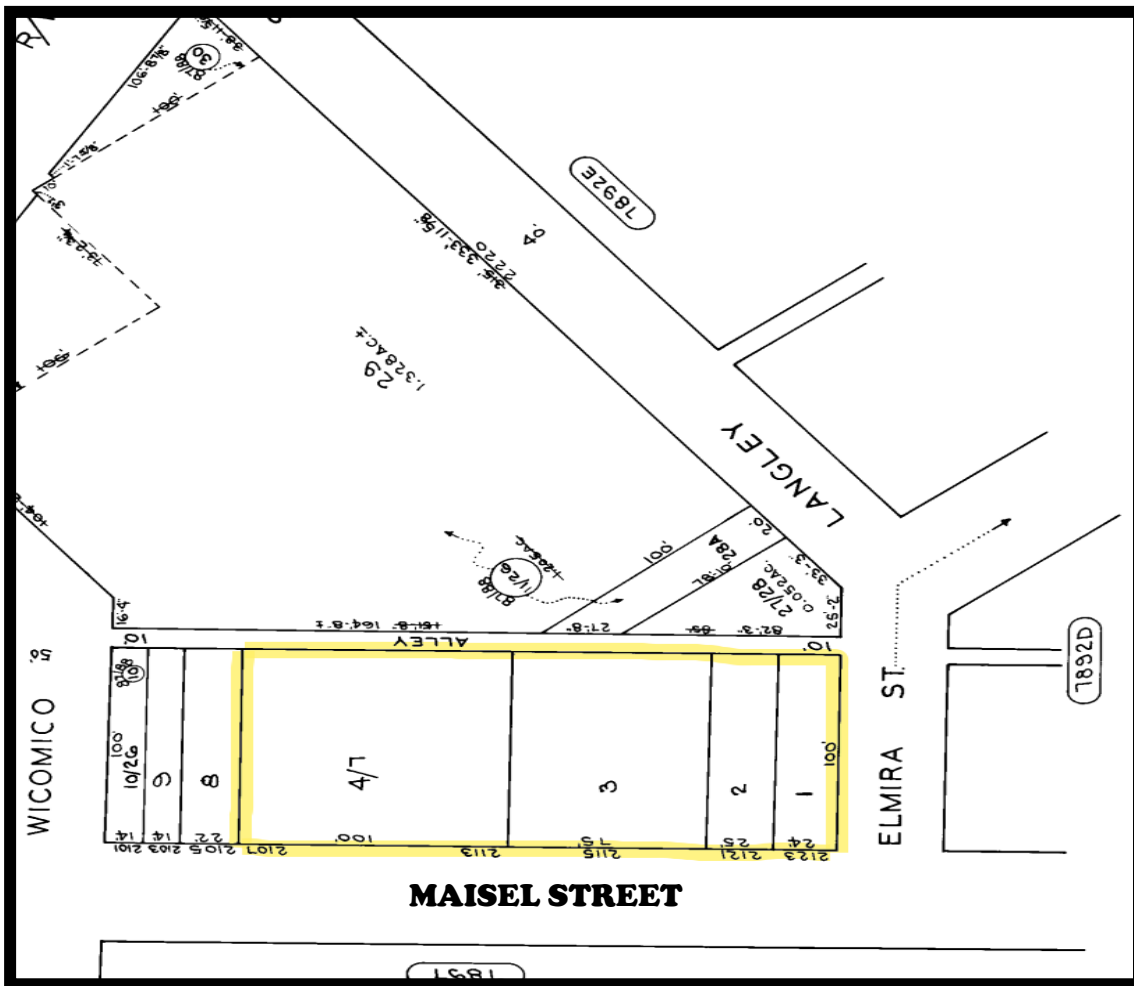


# Gold And Company

Commercial Real Estate in the Baltimore Metropolitan Area

**2107 Maisel St. Baltimore, MD 21230**

## Block Map



**Jim Chivers / Will McCullough**  
**Gold And Company, LLC**  
**5601 Newbury St.**  
**Baltimore, MD 21209**

**410.578.1300 (Office)**

**[www.goldcommercial.net](http://www.goldcommercial.net)**

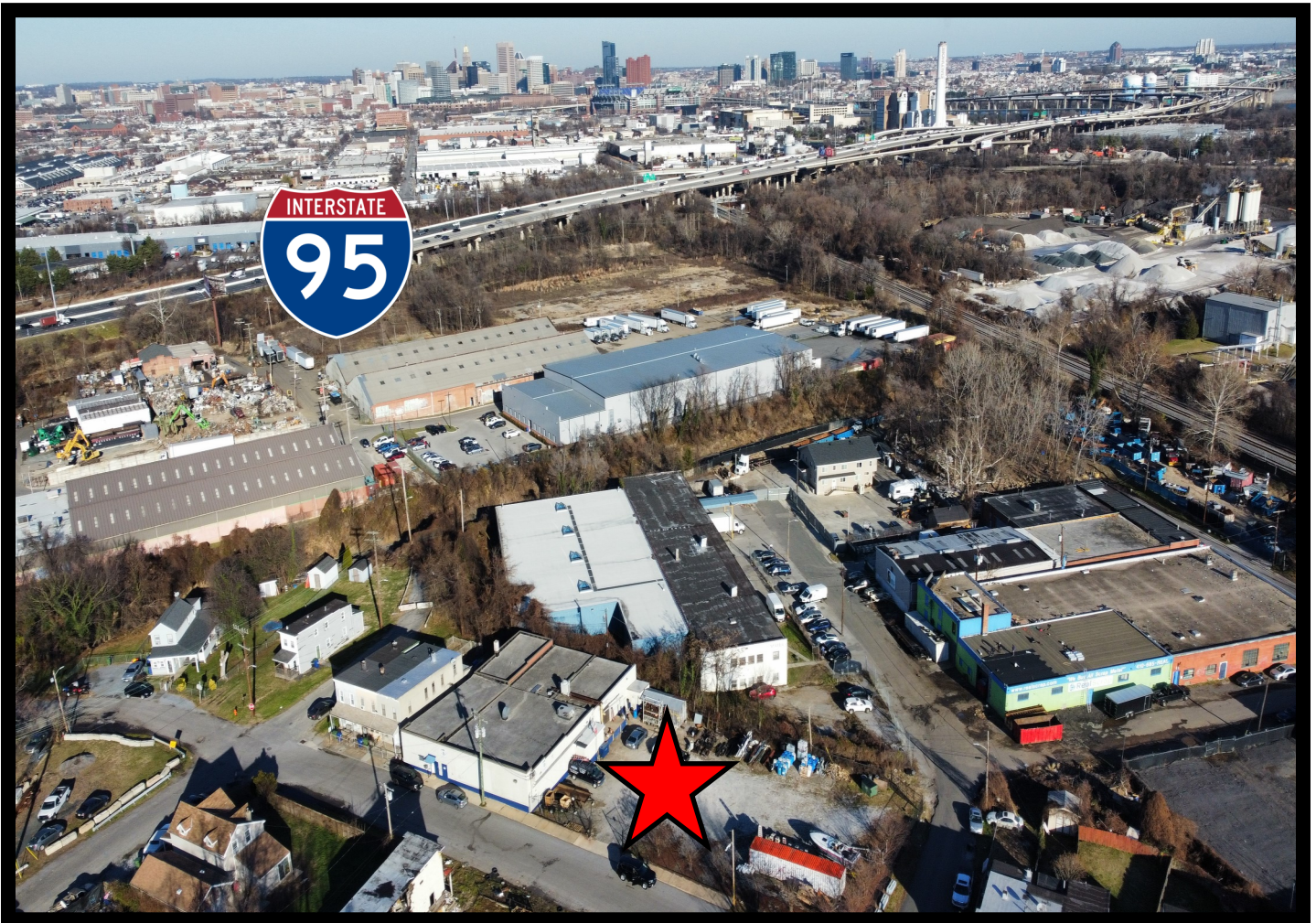


# ***Gold And Company***

***Commercial Real Estate in the Baltimore Metropolitan Area***

**2107 Maisel St. Baltimore, MD 21230**

**Birds Eye View**



**Jim Chivers / Will McCullough  
Gold And Company, LLC  
5601 Newbury St.  
Baltimore, MD 21209**

**410.578.1300 (Office)**

**[www.goldcommercial.net](http://www.goldcommercial.net)**

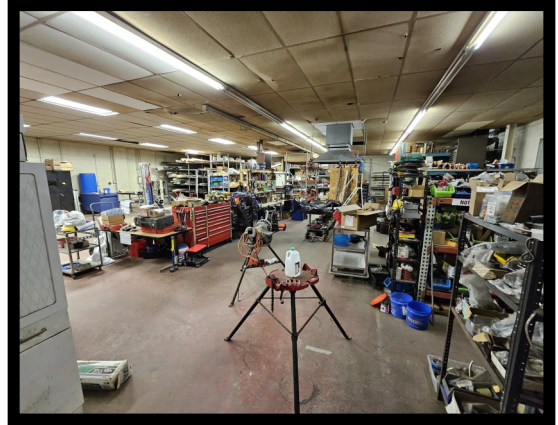


# **Gold And Company**

**Commercial Real Estate in the Baltimore Metropolitan Area**

**2107 Maisel St. Baltimore, MD 21230**

## **Additional Pictures**



**Jim Chivers / Will McCullough**  
**Gold And Company, LLC**  
**5601 Newbury St.**  
**Baltimore, MD 21209**

**410.578.1300 (Office)**

**[www.goldcommercial.net](http://www.goldcommercial.net)**