



# GOLD AND COMPANY, LLC

[WWW.GOLDCOMMERCIAL.NET](http://WWW.GOLDCOMMERCIAL.NET)

*Commercial Real Estate in the Baltimore Metropolitan Area*



## **8711 Belair Rd. Nottingham, MD 21236**

### **Gold And Company, LLC**

**5601 Newbury St.  
Baltimore, MD 21209**

***For More Information:***

**Jim Chivers  
443.928.7522 cell  
jim@goldcommercial.net**

**[www.goldcommercial.net](http://www.goldcommercial.net)**

- **RETAIL / OFFICE BUILDING FOR SALE / LEASE**
- **+/- 7,200 sf Total Building Size**
- **0.51 Ac Land Area**
- **+/- 125' Frontage on Belair Rd.**
- **+/- 35k Annual Average Daily Traffic**
- **CB Zoning—Baltimore County**
- **+/- 21 Off Street Parking Spaces**
- **Built in 2006**
- **Contact For More Information**

This property offering is subject to change without notice. All information is deemed reliable but not guaranteed.

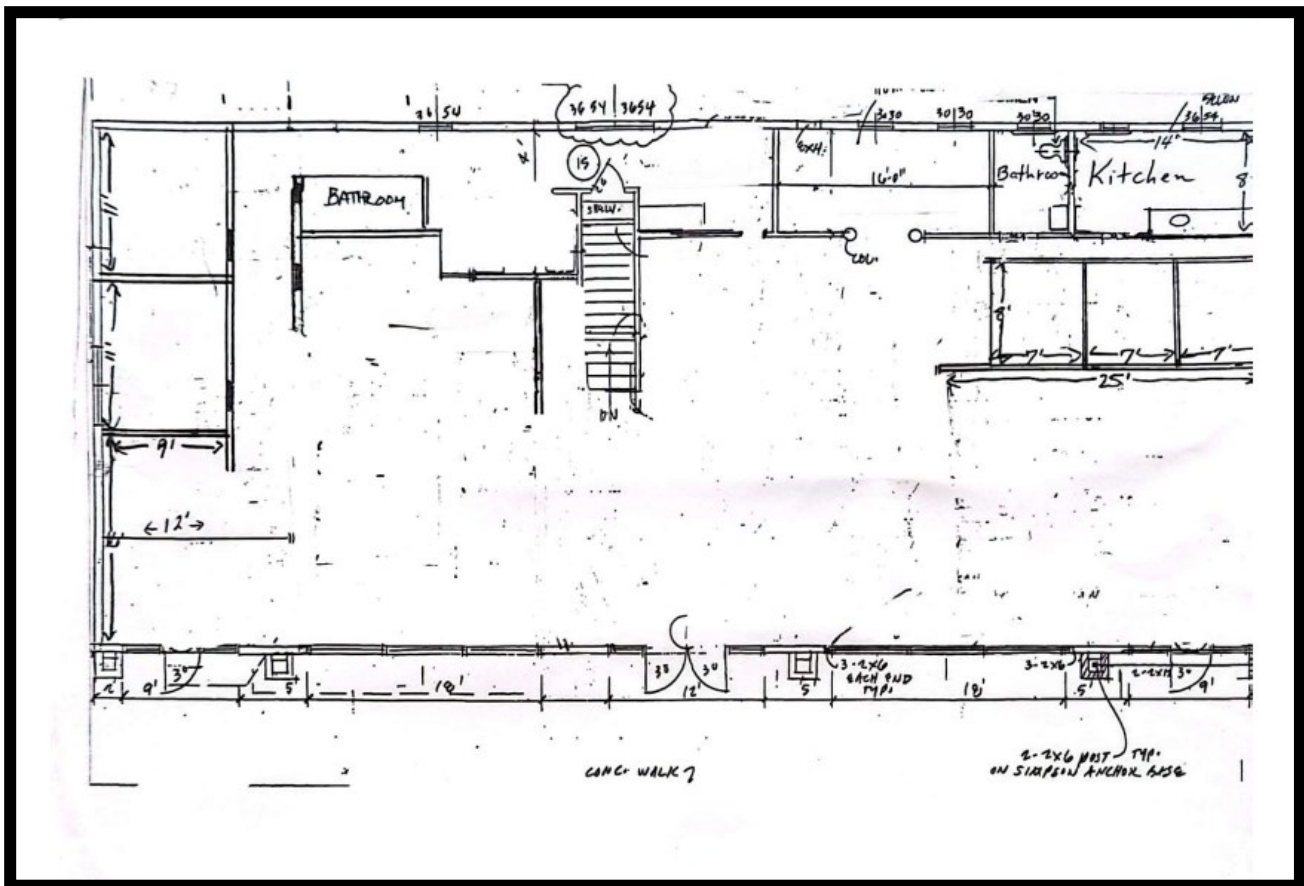


# Gold And Company

Commercial Real Estate in the Baltimore Metropolitan Area

**8711 Belair Rd. Nottingham, MD 21236**

## Building Plan



**Jim Chivers**  
**Gold And Company, LLC**  
**5601 Newbury St.**  
**Baltimore, MD 21209**

**410.578.1300 (Office)**

**[www.goldcommercial.net](http://www.goldcommercial.net)**





# **Gold And Company**

**Commercial Real Estate in the Baltimore Metropolitan Area**

**8711 Belair Rd. Nottingham, MD 21236**

## **Additional Pictures**



**Jim Chivers**  
**Gold And Company, LLC**  
**5601 Newbury St.**  
**Baltimore, MD 21209**

**410.578.1300 (Office)**

**[www.goldcommercial.net](http://www.goldcommercial.net)**





# **Gold And Company**

**Commercial Real Estate in the Baltimore Metropolitan Area**

**8711 Belair Rd. Nottingham, MD 21236**

## **Birds Eye View**



**Jim Chivers**  
**Gold And Company, LLC**  
**5601 Newbury St.**  
**Baltimore, MD 21209**

**410.578.1300 (Office)**

**[www.goldcommercial.net](http://www.goldcommercial.net)**