



GOLD AND COMPANY, LLC

WWW.GOLDCOMMERCIAL.NET

Commercial Real Estate in the Baltimore Metropolitan Area



5247 Reisterstown Rd. Baltimore, MD 21215

For More Information:

Jim Chivers
Sr. Vice President
Gold and Company, LLC
443.928.7522 cell
jim@goldcommercial.net

- **Multi-Story Commercial Building FOR SALE**
- **+/- 5,000 sf Building**
- **C-2 Zoning**
- **Former Adult Daycare Facility**
- **Fully Sprinklered**
- **10 Rooms w/ Offices and 4 Bathrooms & Kitchenette area**
- **Rear Parking Pad w/ Garage or Storage Structure**
- **3 Levels**
- **Ideal for Non-Profit, Daycare, Therapeutic Centers**
- **Contact us For More Information**

This property offering is subject to change without notice. All information is deemed reliable but not guaranteed.

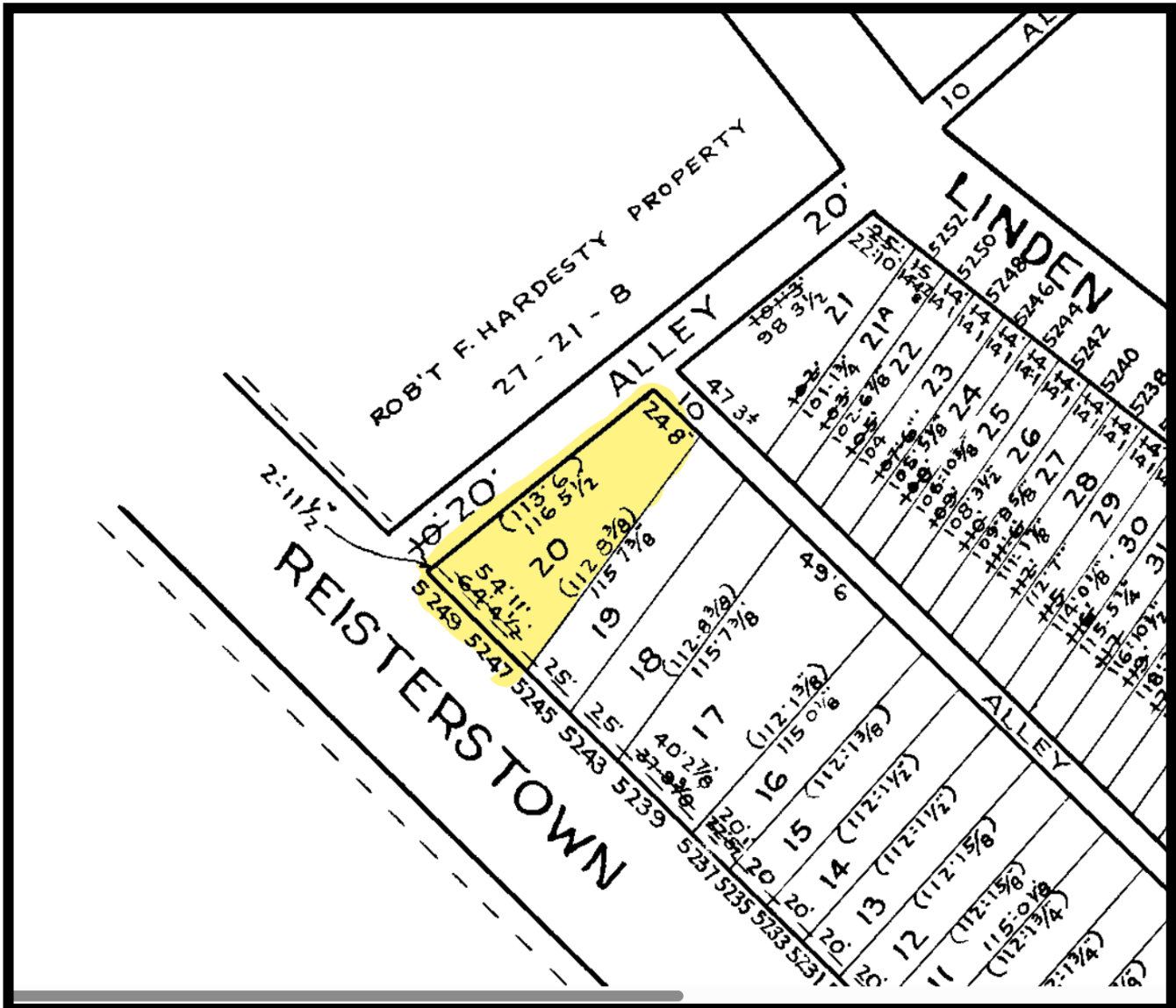


Gold And Company

Commercial Real Estate in the Baltimore Metropolitan Area

5247 Reisterstown Rd. Baltimore, MD 21215

Block Map



Jim Chivers
Gold And Company, LLC
5601 Newbury St.
Baltimore, MD 21209

410.578.1300 (Office)
www.goldcommercial.net



Gold And Company

Commercial Real Estate in the Baltimore Metropolitan Area

5247 Reisterstown Rd. Baltimore, MD 21215

Additional Pictures

