



GOLD AND COMPANY, LLC

WWW.GOLDCOMMERCIAL.NET

Commercial Real Estate in the Baltimore Metropolitan Area



4001 E Baltimore St. Baltimore, MD 21224

Gold And Company, LLC

**5601 Newbury St.
Baltimore, MD 21209**

For More Information:

**Jim Chivers
443.928.7522 cell
jim@goldcommercial.net**

www.goldcommercial.net

- **Loft Industrial Building AVAILABLE FOR SALE**
- **+/- 25,000 sf Building**
- **Interior Dock Loading Area**
- **Drive-In Door**
- **Small Fenced-In Parking Area**
- **3 Phase Power**
- **New Roof Recently Installed**
- **I-2 Zoning—Heavy Industrial Zoning**
- **3 Levels**
- **Freight Lift**
- **Adjacent to Highlands Forge—New Development**
- **Call For More Information**

This property offering is subject to change without notice. All information is deemed reliable but not guaranteed.



Gold And Company

Commercial Real Estate in the Baltimore Metropolitan Area

Additional Pictures



Jim Chivers
Gold And Company, LLC

410.578.1300 (Office)
www.goldcommercial.net

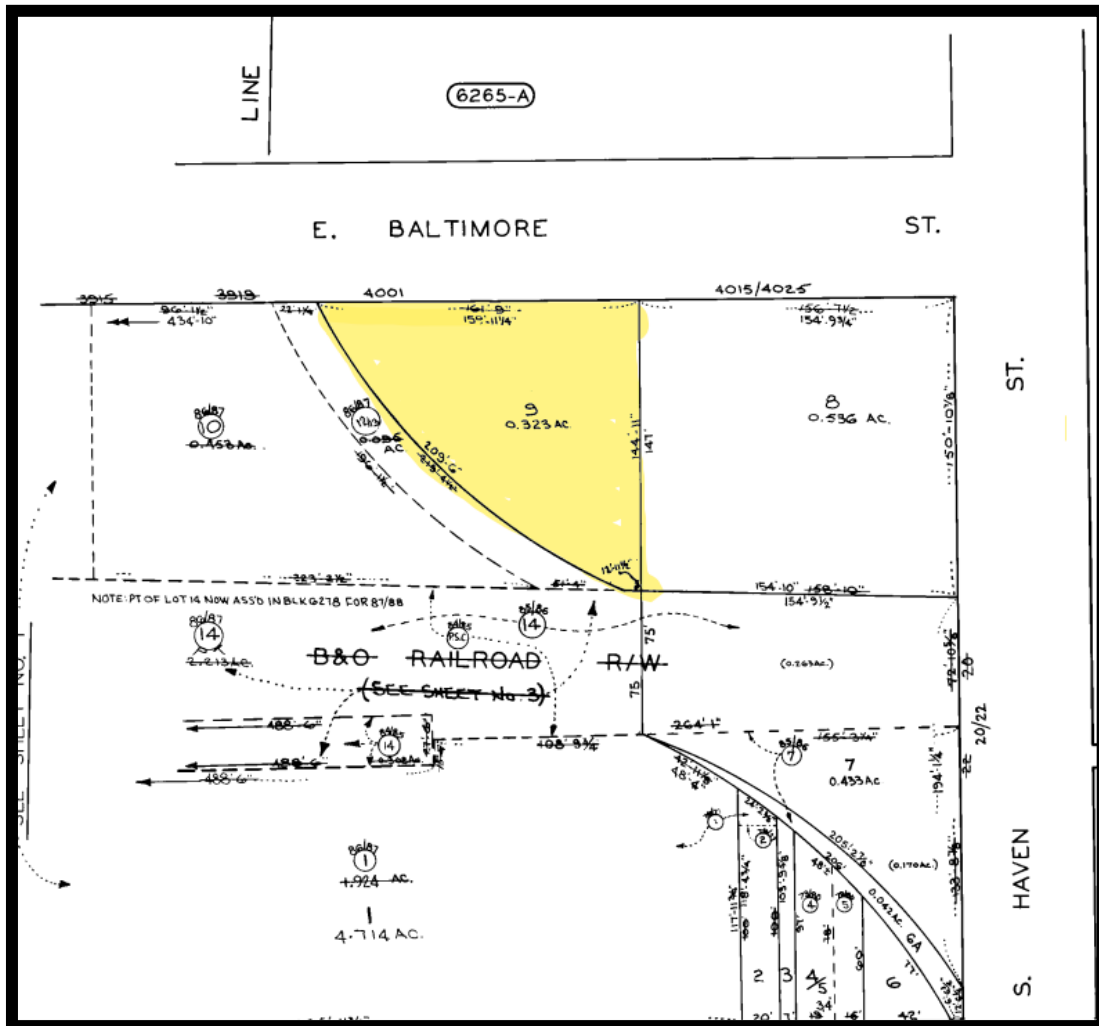


Gold And Company

Commercial Real Estate in the Baltimore Metropolitan Area

4001 E Baltimore St. Baltimore, MD 21224

BLOCK MAP



Jim Chivers
Gold And Company, LLC

410.578.1300 (Office)
www.goldcommercial.net

Commercial Real Estate in the Baltimore Metropolitan Area