



# GOLD AND COMPANY, LLC

[WWW.GOLDCOMMERCIAL.NET](http://WWW.GOLDCOMMERCIAL.NET)

*Commercial Real Estate in the Baltimore Metropolitan Area*



**3909 Eastern Avenue, Baltimore, MD 21224**

## Gold And Company, LLC

5601 Newbury St.  
Baltimore, MD 21209

**For More Information:**

**Jim Chivers**  
Sr. Vice President  
443.928.7522 cell  
[jim@goldcommercial.net](mailto:jim@goldcommercial.net)

**Will McCullough**  
Vice President  
410.292.2985 cell  
[will@goldcommercial.net](mailto:will@goldcommercial.net)

[www.goldcommercial.net](http://www.goldcommercial.net)

- **Office Retail Building for Lease**
- **High Visibility in the Heart of Highlandtown**
- **2,800 sf high-ceiling showroom**
- **Well-maintained Suite in Excellent Condition**
- **Open and Flexible Layout**
- **Ample Street Parking**
- **Ideal for Wide Range of Retail/Office Uses**
- **Proximity to I-95 and Downtown Baltimore**

This property offering is subject to change without notice. All information is deemed reliable but not guaranteed.

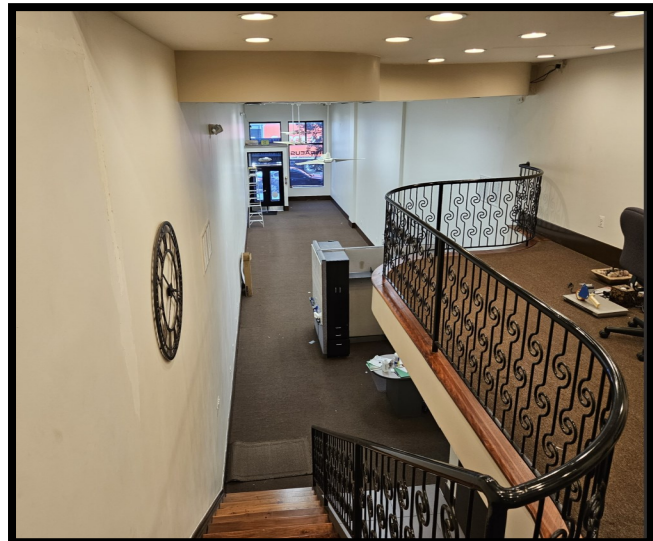
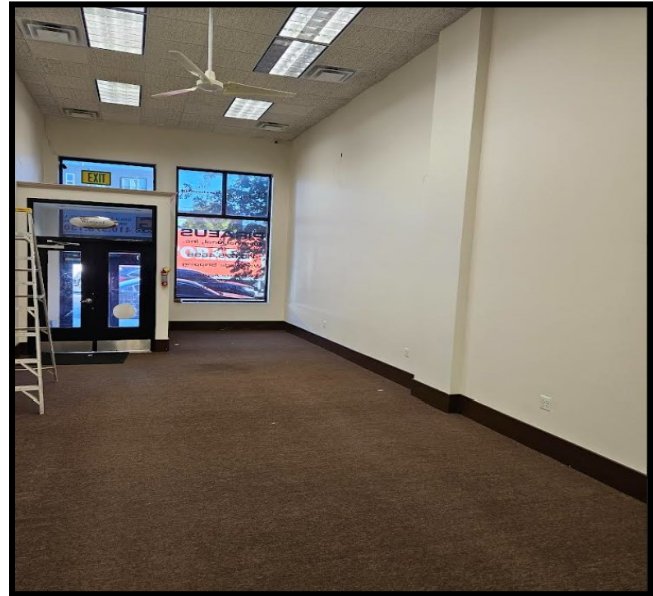


# **Gold And Company**

**Commercial Real Estate in the Baltimore Metropolitan Area**

**3909 Eastern Avenue, Baltimore, MD 21224**

## **Interior Photos**



**Jim Chivers / Will McCullough**  
**Gold And Company, LLC**  
**5601 Newbury St.**  
**Baltimore, MD 21209**

**410.578.1300 (Office)**

**[www.goldcommercial.net](http://www.goldcommercial.net)**



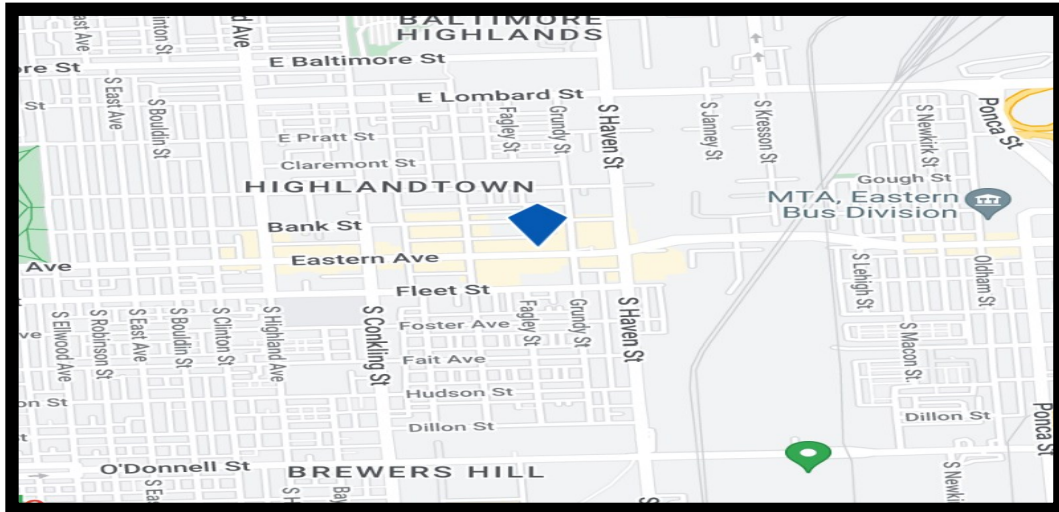
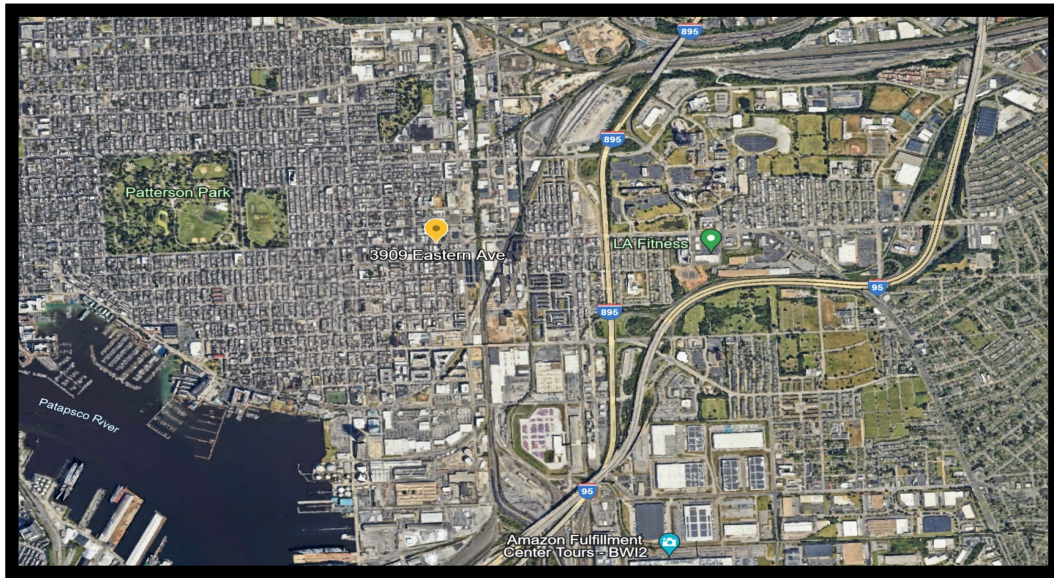


# **Gold And Company**

**Commercial Real Estate in the Baltimore Metropolitan Area**

**3909 Eastern Avenue, Baltimore, MD 21224**

## **Property Map & Aerial**



**Jim Chivers / Will McCullough**  
**Gold And Company, LLC**  
**5601 Newbury St.**  
**Baltimore, MD 21209**

**410.578.1300 (Office)**

**[www.goldcommercial.net](http://www.goldcommercial.net)**

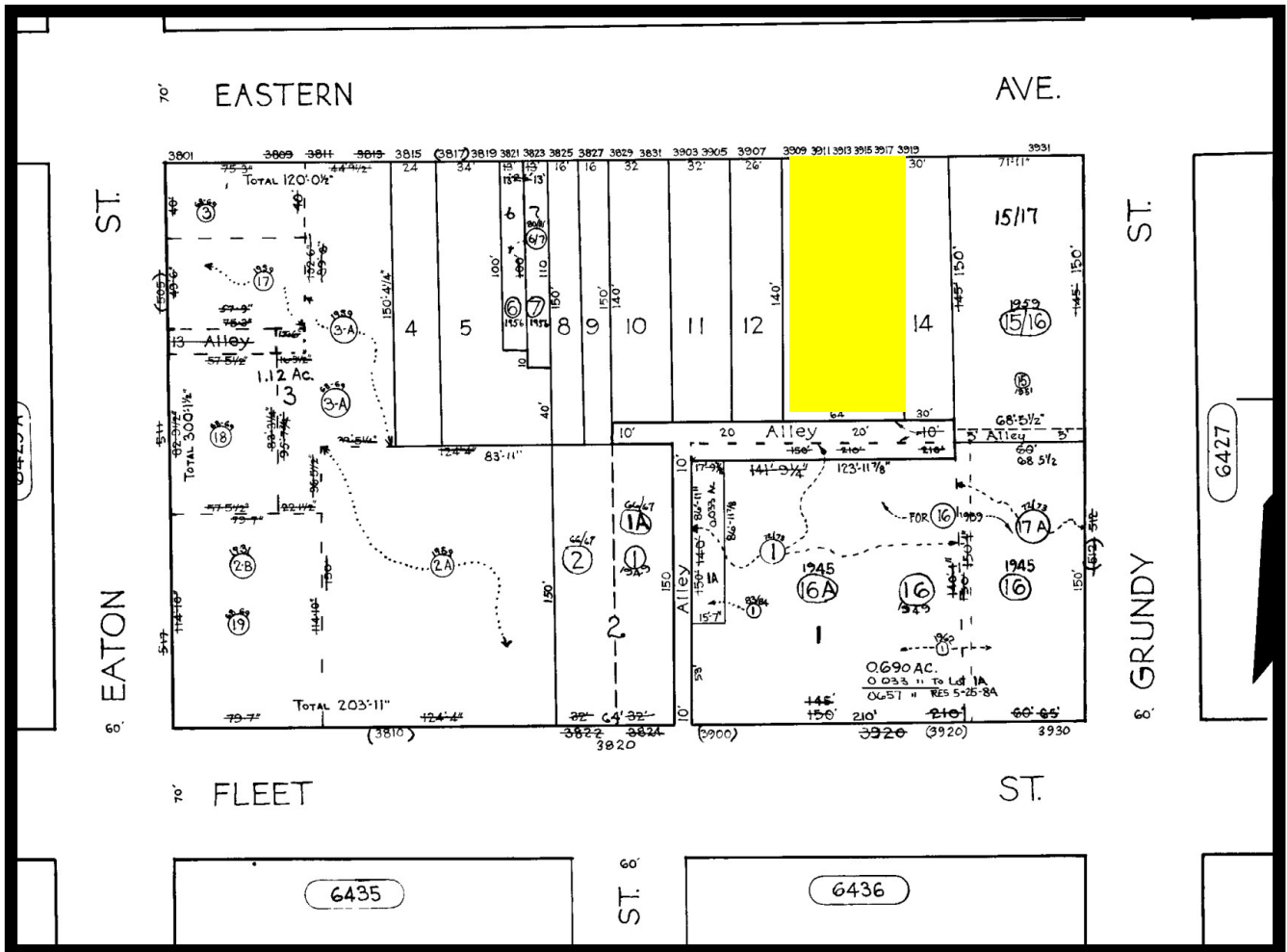


# Gold And Company

Commercial Real Estate in the Baltimore Metropolitan Area

**3909 Eastern Avenue, Baltimore, MD 21224**

## Plat Map- Highlandtown Location



**Jim Chivers / Will McCullough**  
**Gold And Company, LLC**  
**5601 Newbury St.**  
**Baltimore, MD 21209**

**410.578.1300 (Office)**

**[www.goldcommercial.net](http://www.goldcommercial.net)**