



# **GOLD AND COMPANY, LLC**



**1100 Batavia Farm Road, Rosedale, Maryland 21237**

## **Gold and Company, LLC**

**5601 Newbury St.  
Baltimore, MD 21209**

**Alex Simone  
443.845.4413  
[Alex@goldcommercial.net](mailto:Alex@goldcommercial.net)**

**Mitch Gold  
410.456.2492  
[Mitch@goldcommercial.net](mailto:Mitch@goldcommercial.net)**

**Office: 410.578.1300  
[www.goldcommercial.net](http://www.goldcommercial.net)**

- **Drive-In Flex Space**
- **FOR LEASE**
- **3,200 +/- sf**
- **Nice Office Buildout**
- **15 +/- parking spaces**
- **Convenient to Pulaski Highway, I-695 and I-95**
- **15 +/- minutes to the Port**
- **12' and 17' ceilings +/-**
- **ML-IM zoning – light ind.**

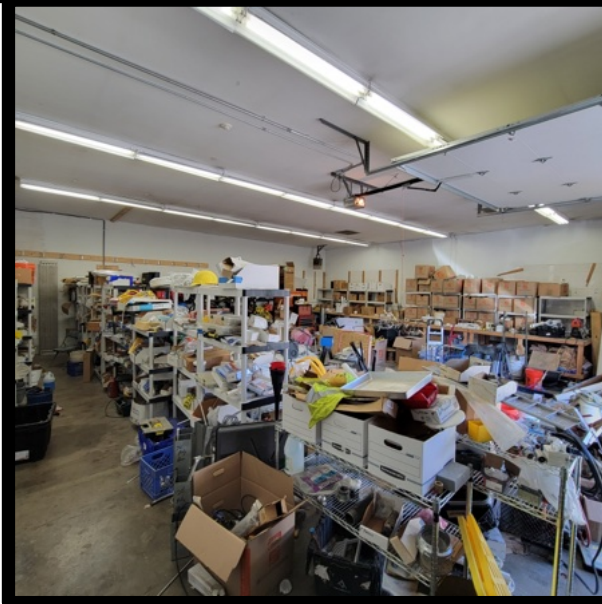


Est. 1999

# Gold and Company

*Commercial Real Estate in the Baltimore Metropolitan Area*

**1100 Batavia Farm Road, Rosedale, Maryland 21237**



**Alex Simone / Mitch Gold**  
**Gold and Company, LLC**  
**5601 Newbury St.**  
**Baltimore, MD 21209**

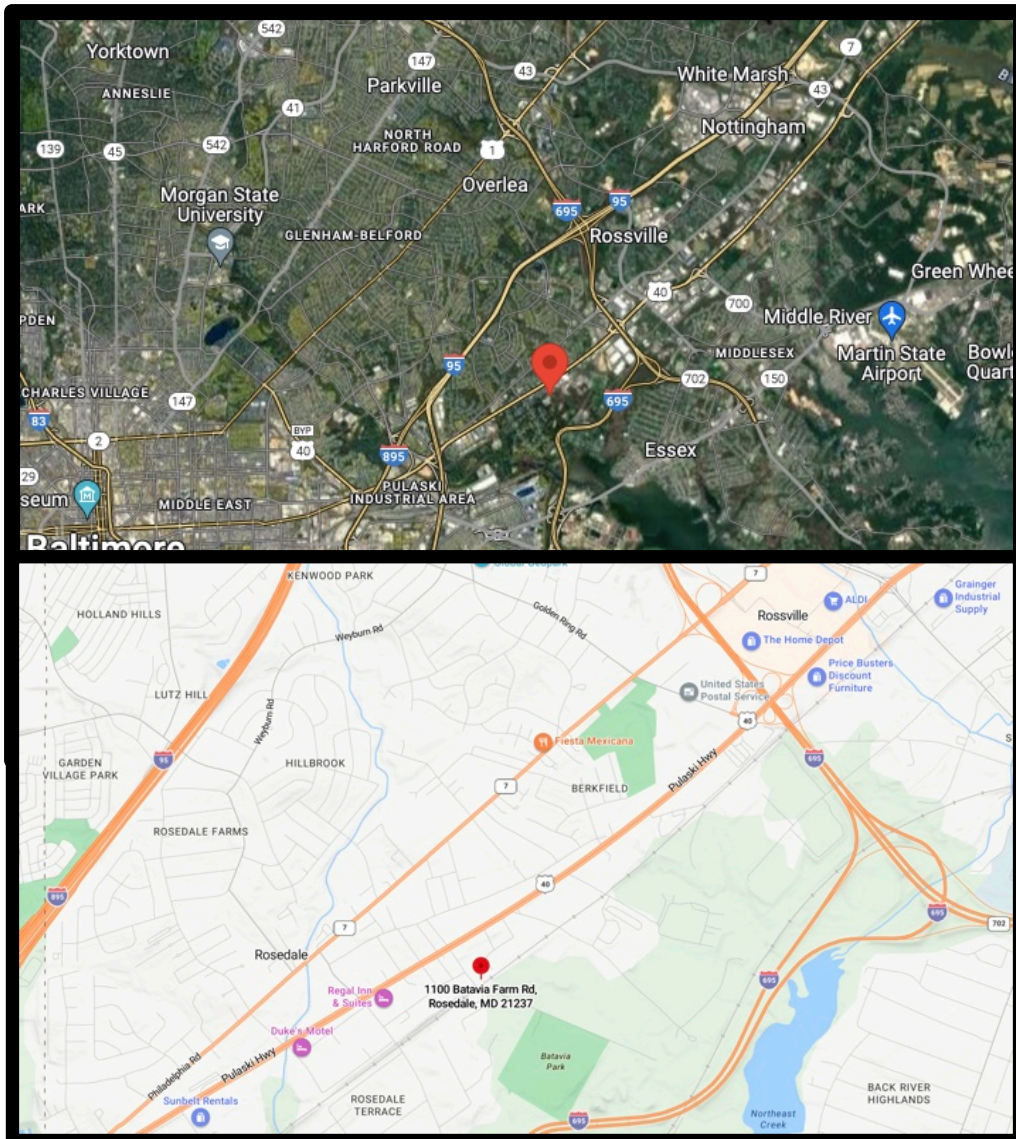
**410.578.1300**  
**[www.goldcommercial.net](http://www.goldcommercial.net)**



# Gold and Company

*Commercial Real Estate in the Baltimore Metropolitan Area*

**1100 Batavia Farm Road, Rosedale, Maryland 21237**



**Alex Simone / Mitch Gold**  
**Gold and Company, LLC**  
**5601 Newbury St.**  
**Baltimore, MD 21209**

**410.578.1300**  
**[www.goldcommercial.net](http://www.goldcommercial.net)**