



# Gold and Company

*Commercial Real Estate in the Baltimore Metropolitan Area*



**708 N Howard St, Baltimore, MD 21201**

## **Gold and Company, LLC**

**5601 Newbury St.  
Baltimore, MD 21209**

**Gary Glover**  
**443.629-2133**  
[gary@goldcommercial.net](mailto:gary@goldcommercial.net)

**Mitch Gold**  
**410.456.2492**  
[Mitch@goldcommercial.net](mailto:Mitch@goldcommercial.net)

## **Midtown Mixed-Use Building FOR SALE**

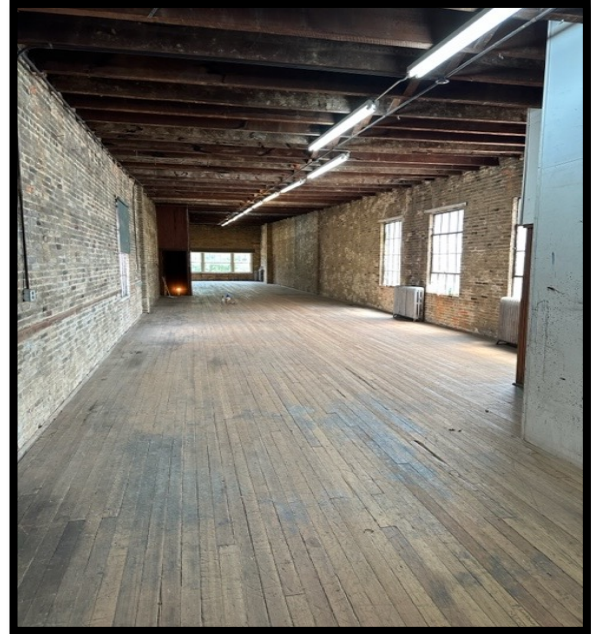
- **Famous AT Jones Building**
- **Located on Historic Howard St**
- **Building Size: 10,500 sf**
- **Zoning: C-1**
- **3 Stories with Basement**
- **Operational Elevator**
- **Loft Style**
- **Ceiling Height: 12'-18'**



# Gold and Company

*Commercial Real Estate in the Baltimore Metropolitan Area*

## *Images*

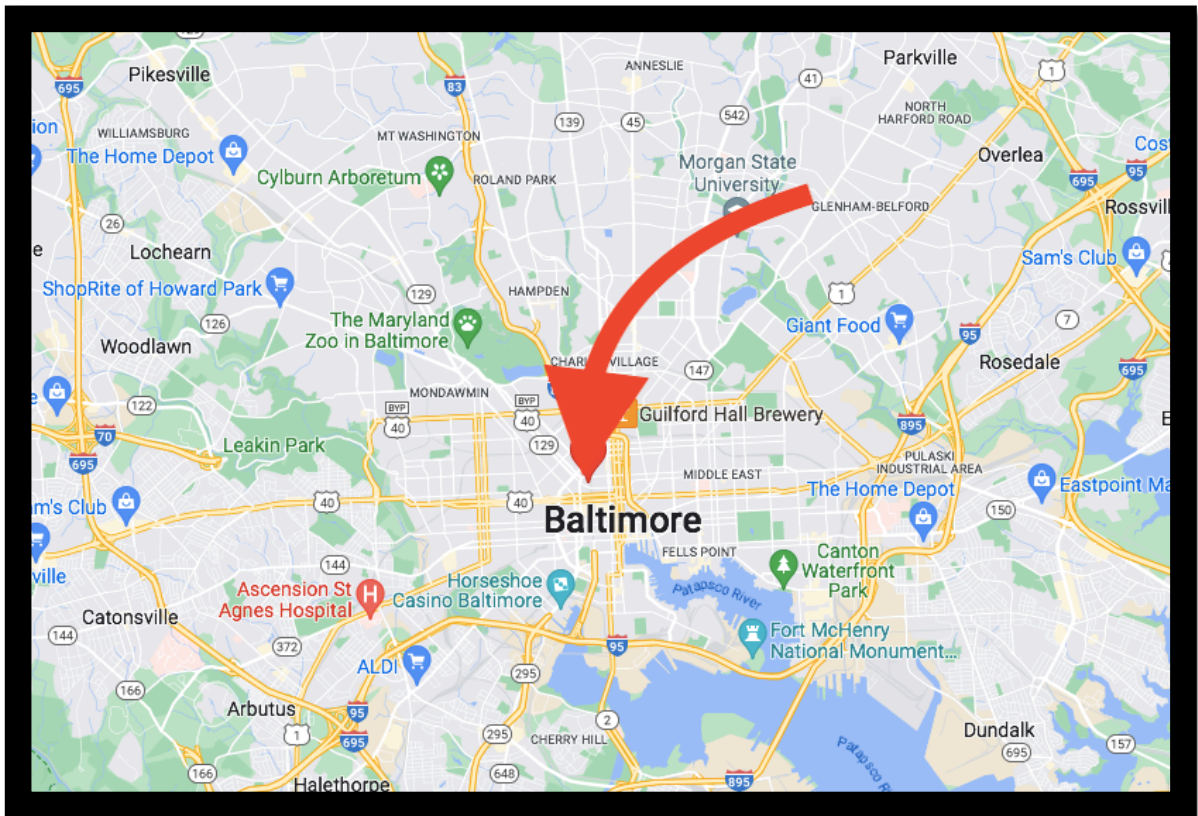




# Gold and Company

*Commercial Real Estate in the Baltimore Metropolitan Area*

## MAP



**Gary Glover/ Mitch Gold**  
**Gold and Company, LLC**  
**5601 Newbury St.**  
**Baltimore, MD 21209**

**410.578.1300**  
**[www.goldcommercial.net](http://www.goldcommercial.net)**